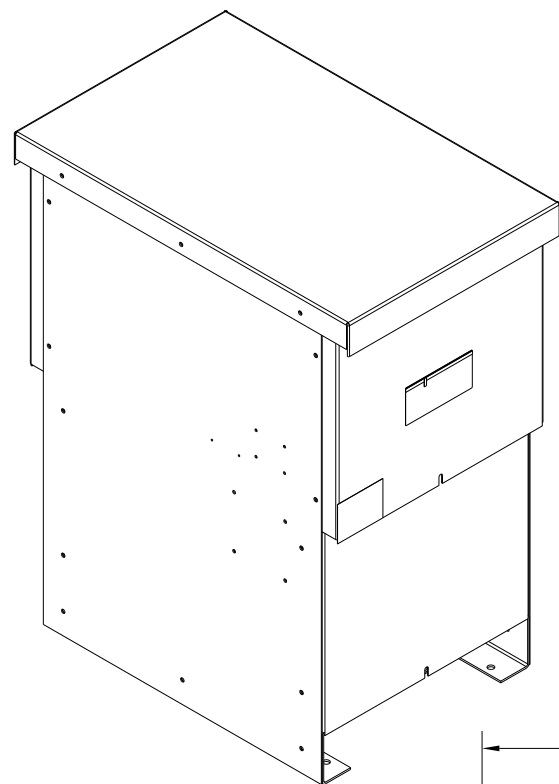


GENERAL PURPOSE, 1/3R, COLOR: WHITE.

209 LBS : APPROX WEIGHT.

GROUND LUG
WIRE RANGE: 1/0-14 AWG
TORQUE: 200 LB-IN



KMG HIGH PERFORMANCE OUTPUT FILTER

PART NUMBER: KMG55AG3R0000

FLA: 55 DRAWING#: 103449DG

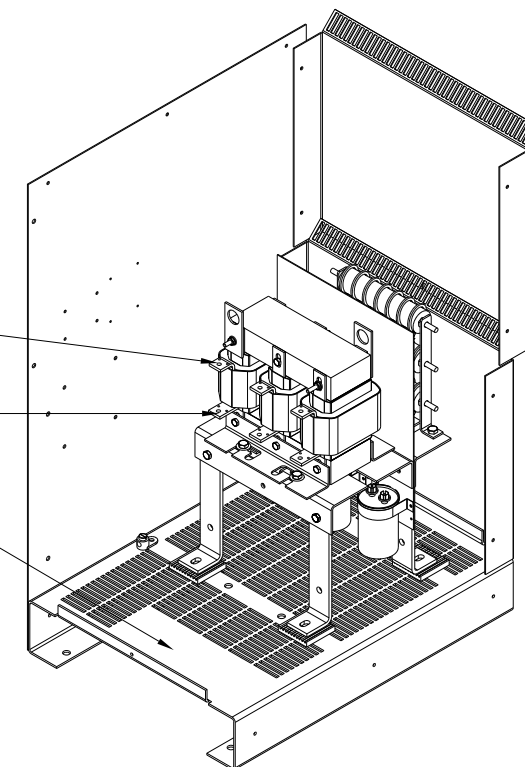
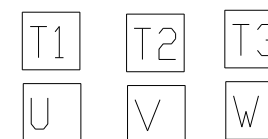
SYSTEM VOLTAGE: 480V SCHEMATIC: 26886

HZ: 80

PHASE: 3 ENCLOSURE TYPE: 1/3R

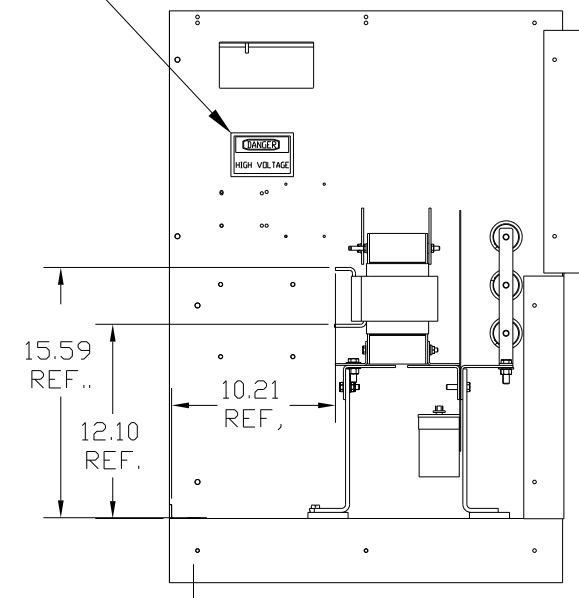
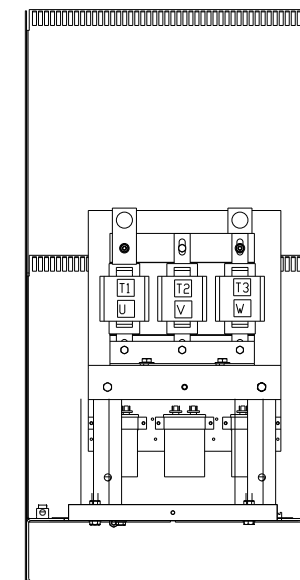
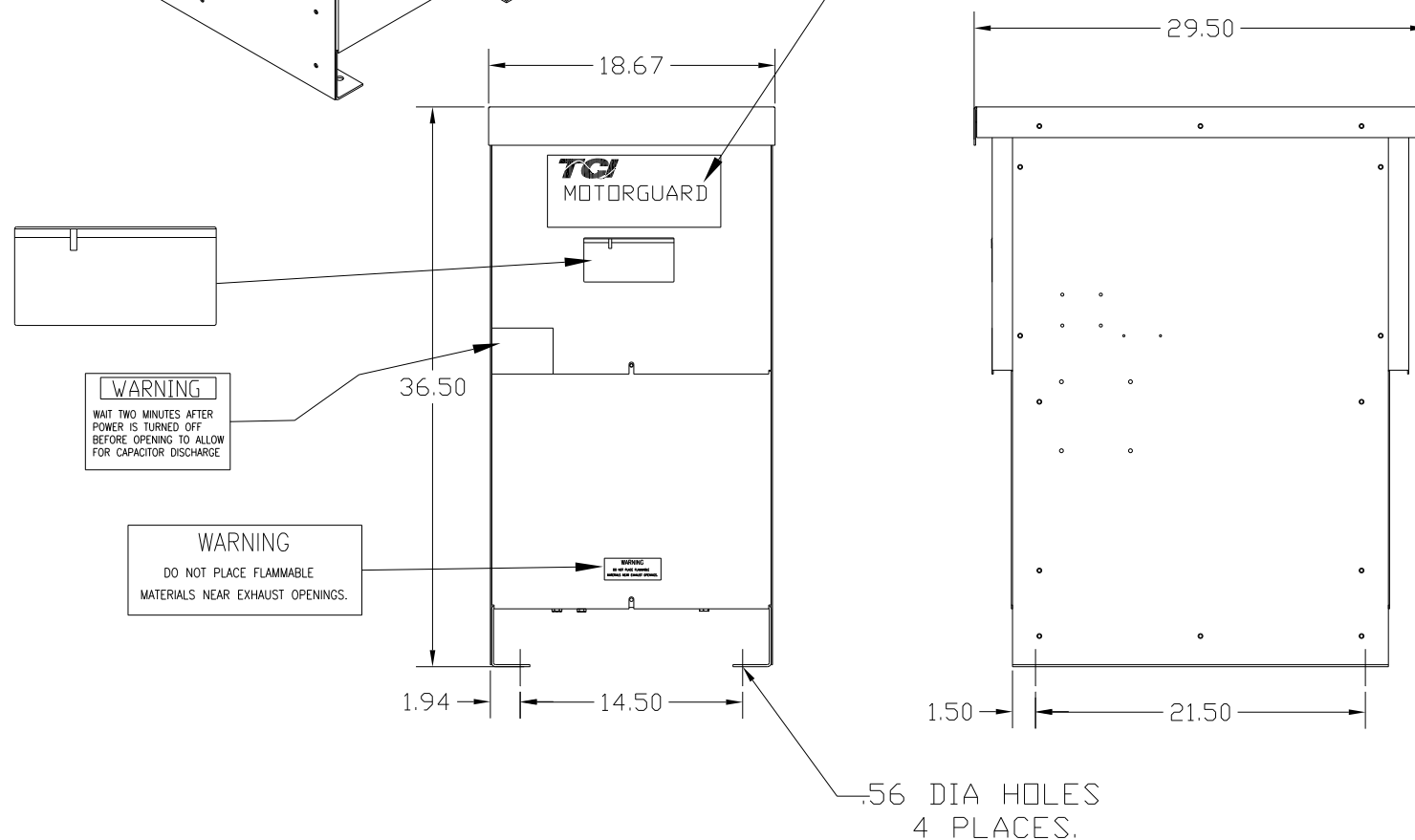
MOTORGUARD

CUSTOMER CONNECTIONS
(.28 DIA HOLES 6 PLACES.)



CUSTOMER WIRE ENTRANCE
AND EXIT LOCATION.

TCI
MOTORGUARD



CUSTOMER IS RESPONSIBLE FOR INSTALLATION
TO MEET ALL NATIONAL AND LOCAL ELECTRICAL CODES.

PART NUMBER: KMG55AG3R0000

FOR SCHEMATIC SEE DRAWING # 26886.

				TOLERANCES (EXCEPT AS NOTED)	7878 N. 86th STREET MILWAUKEE, WI 53224 KMG, LRC FILTER STANDARD 55 AMP 480/3/80, 1/3R
				DECIMAL	
				.XX ±.03	
				.XXX±.01	
				FRACTIONAL ± 1/32	
				ANGULAR ± 1/2°	DRN. BY DSW DATE 11/25/08 DWG. NO. 103449DG SCALE TO FIT APPRVD. C
NO	REVISION	DATE	BY		SHT. 1 OF 1