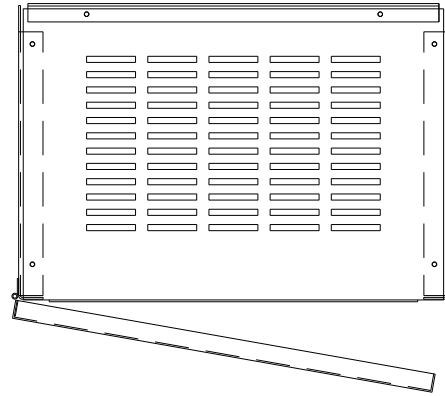


KMG55A01A  
 APPROX WEIGHT: 169LBS

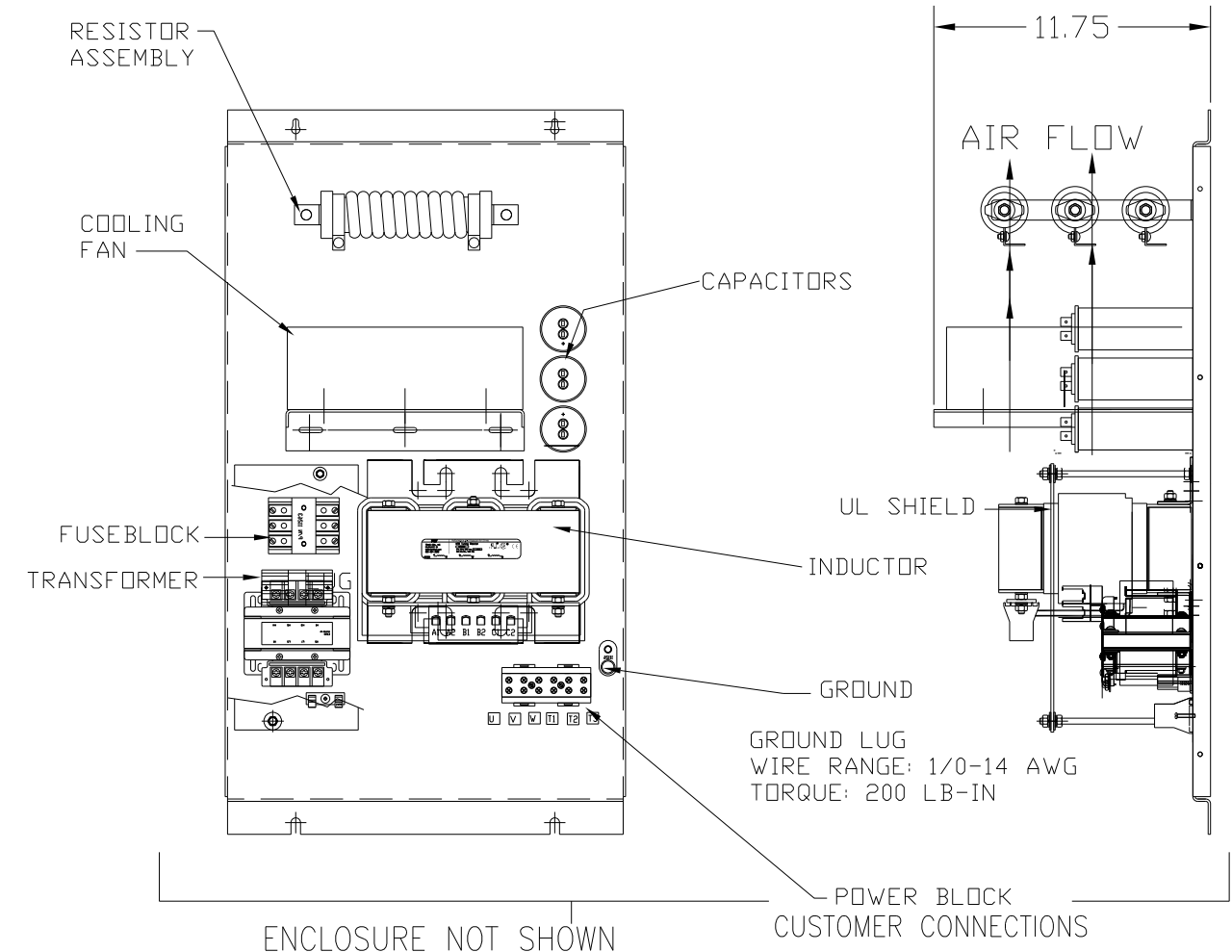
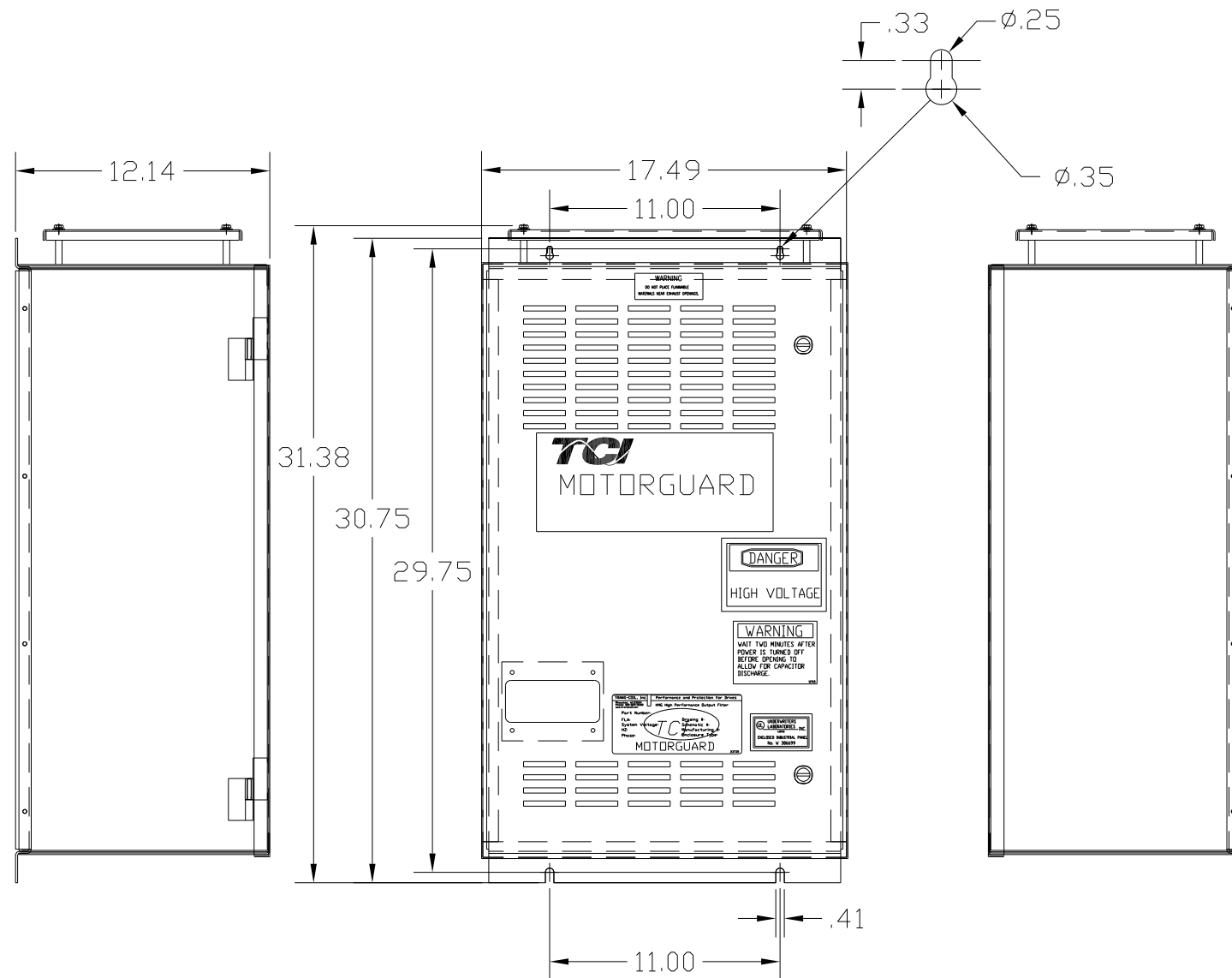


KMG HIGH PERFORMANCE OUTPUT FILTER

PART NUMBER: KMG55A01A  
 FLA: 55  
 SYSTEM VOLTAGE: 480  
 HZ: 80  
 PHASE: 3

DRAWING#: 104355DG  
 SCHEMATIC: 24281-1A

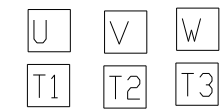
MOTORGUARD



FOR SCHEMATIC SEE DRAWING P/N 24281-1A

CUSTOMER IS RESPONSIBLE FOR PROPER  
 INSTALLATION OF ASSEMBLY IN ACCORDANCE  
 WITH LOCAL AND NATIONAL CODES.

LINE CONNECTIONS  
 WIRE RANGE: 1 AWG THRU 4 AWG 35 LB-IN  
 6 AWG THRU 14 AWG 30 LB-IN  
 16 AWG THRU 22 AWG 25 LB-IN



				TOLERANCES (EXCEPT AS NOTED):		7878 N. 86th STREET MILWAUKEE, WI 53224	
				DECIMAL		Standard SineWave Filter	
				.XX ± .02		ENCLOSED, 40HP, 55AMP, 480V	
				.XXX ± .01		DRN. BY DSW DATE 10/07/2010 DWG. NO. 104355DG	
				FRACTIONAL		SCALE TO FIT	
				± 1/32		APRVD. C	
				ANGULAR		SHT. 1 OF 1	
				± 1/2°			
NO	REVISION	DATE	BY				