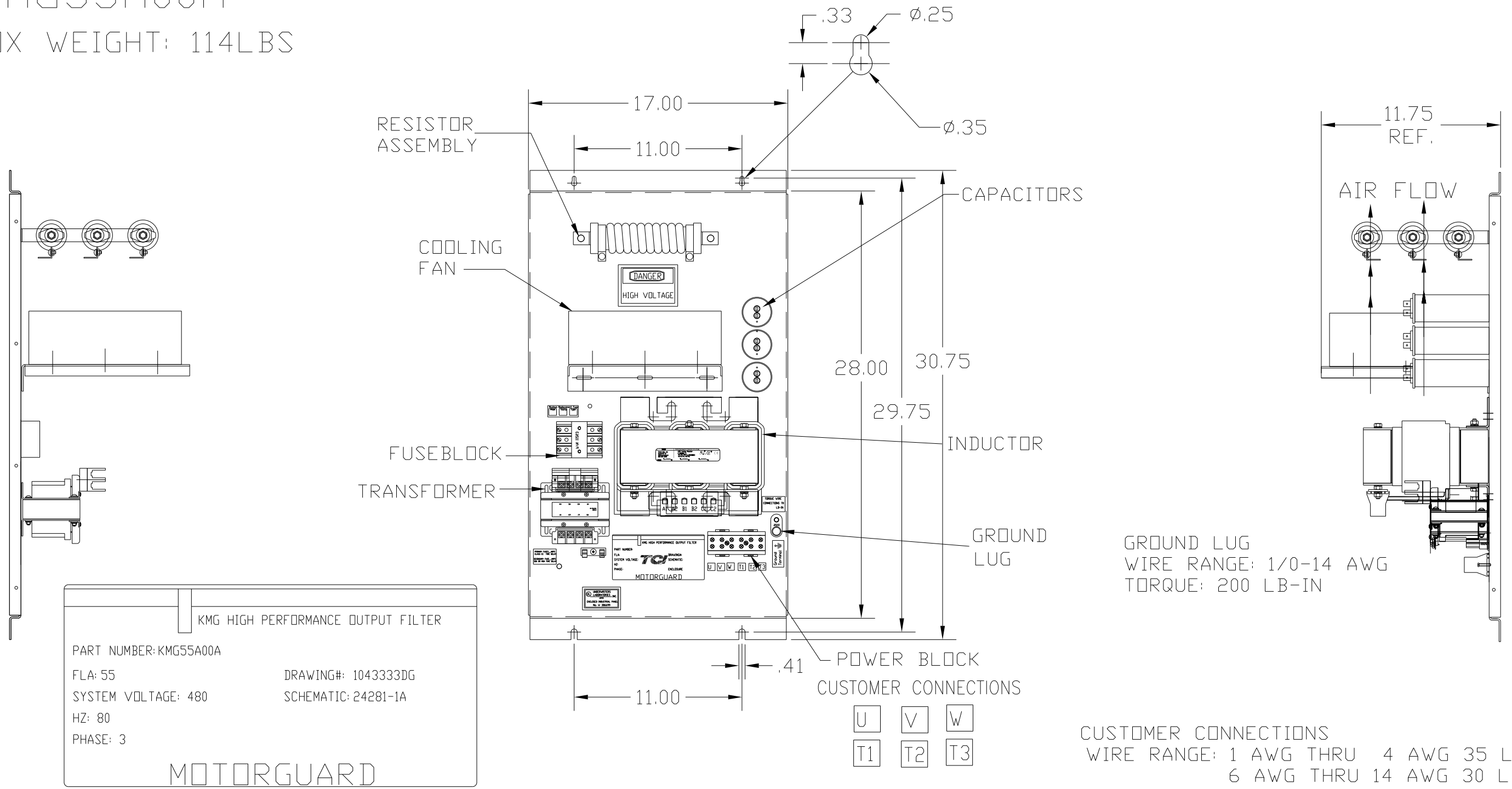


KMG55A00A

APPROX WEIGHT: 114LBS

FOR SCHEMATIC SEE DRAWING P/N 24281-1A



KMG HIGH PERFORMANCE OUTPUT FILTER

PART NUMBER: KMG55A00A

FLA: 55

SYSTEM VOLTAGE: 480

HZ: 80

PHASE: 3


DRAWING#: 104333DG

SCHEMATIC: 24281-1A

MOTORGUARD

CUSTOMER IS RESPONSIBLE FOR PROPER COOLING OF COMPONENTS IN CUSTOMERS ASSEMBLY.

CUSTOMER IS RESPONSIBLE FOR PROPER INSTALLATION OF ASSEMBLY IN ACCORDANCE WITH LOCAL AND NATIONAL CODES.

				TOLERANCES (EXCEPT AS NOTED)	 7878 N. 86th STREET MILWAUKEE, WI 53224 Standard, SineWave Filter Open, 40HP, 55AMP, 480V
				DECIMAL	
				.XX ± .02	
				.XXX ± .01	
				FRACTIONAL ± 1/32	
				ANGULAR ± 1/2°	DRN. BY DSW SCALE TO FIT
NO	REVISION	DATE	BY		DATE 10/04/2010 APRVD. DWG. NO. 104333DG B SHT. 1 OF 1