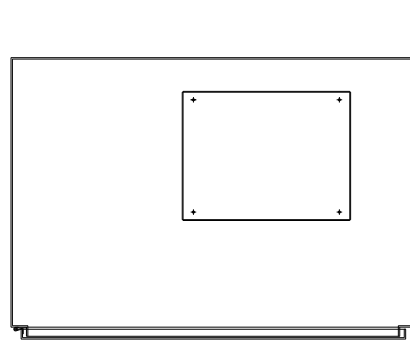


KMG480A01A  
 APPROX WEIGHT: 969LBS

FOR SCHEMATIC SEE DRAWING P/N 24281-3A

GROUND LUG  
 WIRE RANGE: (2)600MCM-#2 AWG  
 TORQUE: 500 LB-IN

LINE CONNECTIONS  
 WIRE RANGE: (2)600MCM-#2 AWG  
 TORQUE: 500 LB-IN



KMG HIGH PERFORMANCE OUTPUT FILTER

PART NUMBER: KMG480A01A

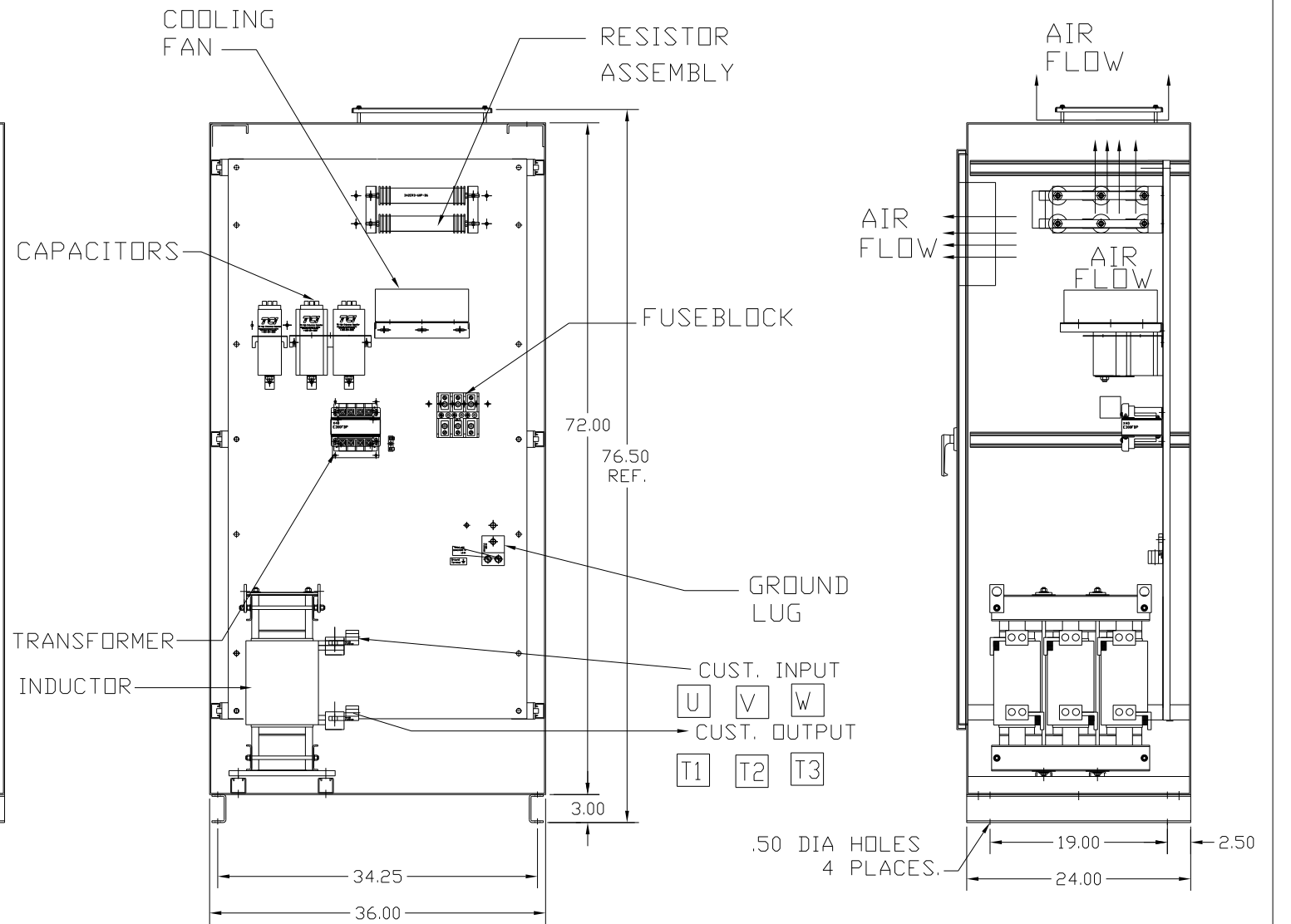
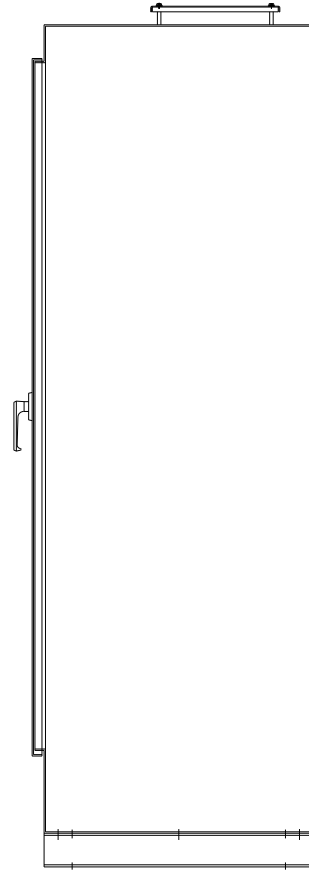
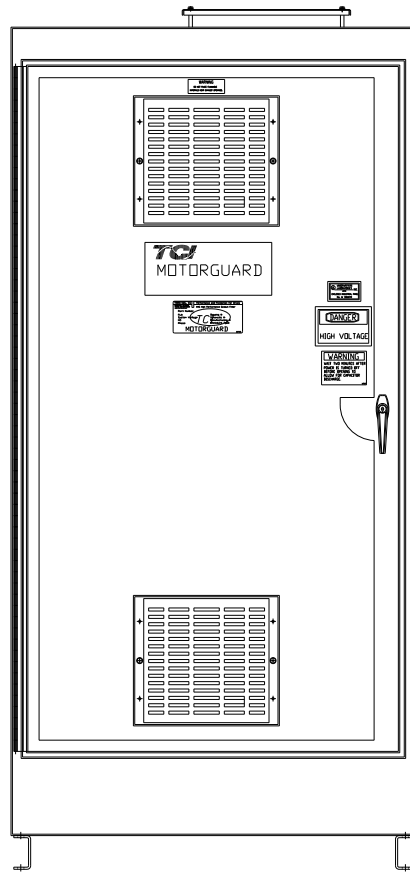
FLA: 480                      DRAWING#: 104366DG

SYSTEM VOLTAGE: 480        SCHEMATIC: 24281-3A

HZ: 80

PHASE: 3

MOTORGUARD



CUSTOMER IS RESPONSIBLE FOR PROPER  
 INSTALLATION OF ASSEMBLY IN ACCORDANCE  
 WITH LOCAL AND NATIONAL CODES.

				TOLERANCES (EXCEPT AS NOTED)		7878 N. 86th STREET MILWAUKEE, WI 53224	
				DECIMAL			
				.XX ± .02		Standard, SineWave Filter ENCLOSED, 400HP, 480AMP, 480V	
				.XXX ± .01			
				FRACTIONAL ± 1/32			
				ANGULAR ± 1/2°		DRN. BY: DSW      DATE: 10/07/2010      DWG. NO.: 104366DG SCALE: TO FIT      APRVD.	
NO	REVISION	DATE	BY	SHT. 1 OF 1			