

KMG45C00A

APPROX WEIGHT: 114LBS

KMG HIGH PERFORMANCE OUTPUT FILTER

PART NUMBER: KMG45C00A

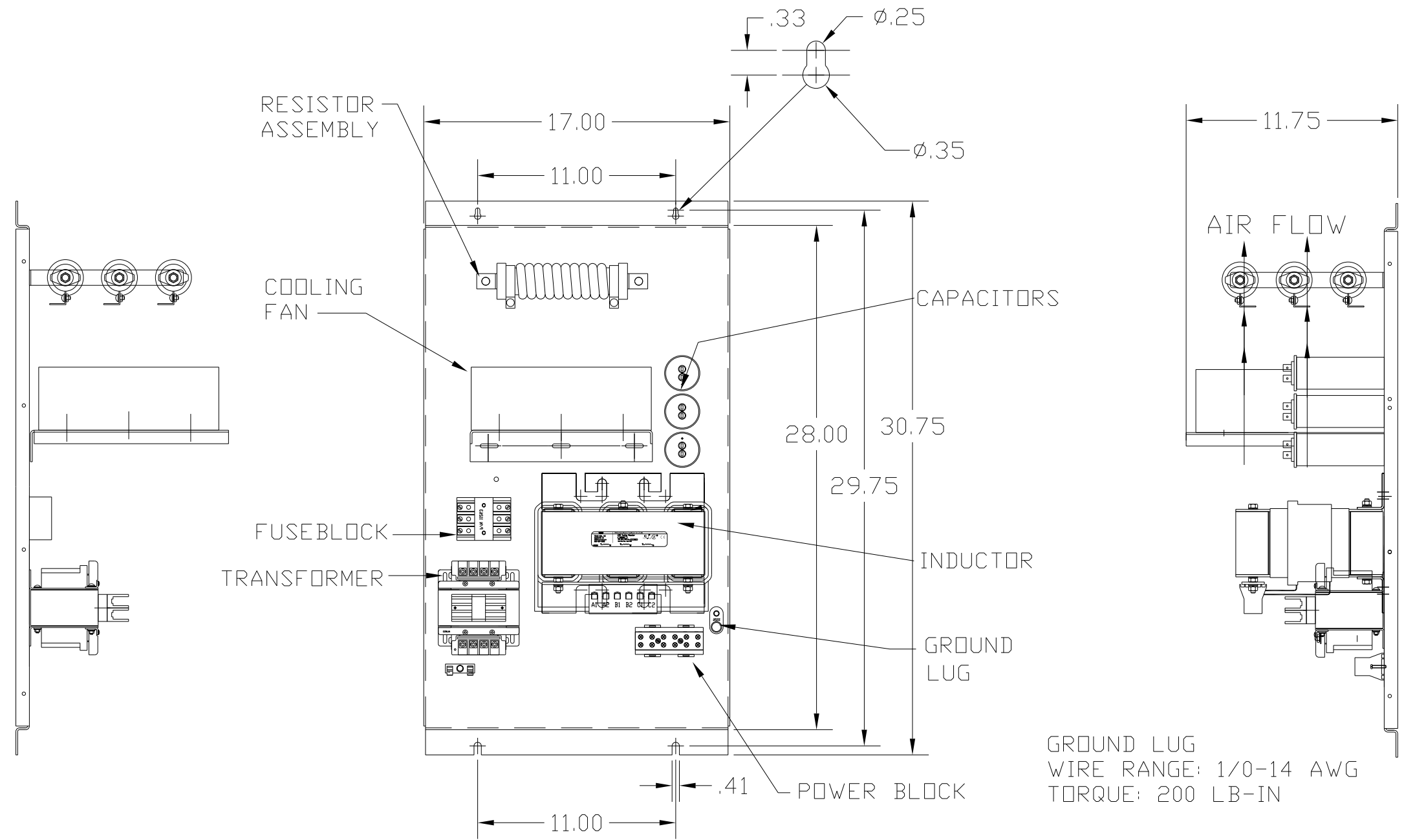
FLA: 45 DRAWING#: 104420DG

SYSTEM VOLTAGE: 600 SCHEMATIC: 24281-11A

HZ: 80

PHASE: 3

MOTORGUARD



LINE CONNECTIONS

WIRE RANGE: 1 AWG THRU 4 AWG 35 LB-IN
 6 AWG THRU 14 AWG 30 LB-IN
 16 AWG THRU 22 AWG 25 LB-IN

FOR SCHEMATIC SEE DRAWING P/N 24281-11A

CUSTOMER IS RESPONSIBLE FOR PROPER COOLING OF COMPONENTS IN CUSTOMERS ASSEMBLY.

CUSTOMER IS RESPONSIBLE FOR PROPER INSTALLATION OF ASSEMBLY IN ACCORDANCE WITH LOCAL AND NATIONAL CODES.

				TOLERANCES (EXCEPT AS NOTED)	7878 N. 86th STREET MILWAUKEE, WI 53224
				DECIMAL	
				.XX ± .02	
				.XXX ± .01	
				FRACTIONAL	Standard, SineWave Filter Open, 40HP, 45AMP, 600V
				± 1/32	
				ANGULAR	DRN. BY DSW DATE 10/12/2010 DWG. NO. 104420DG
				± 1/2°	SCALE TO FIT APRVD. B
NO	REVISION	DATE	BY		SHT. 1 OF 1