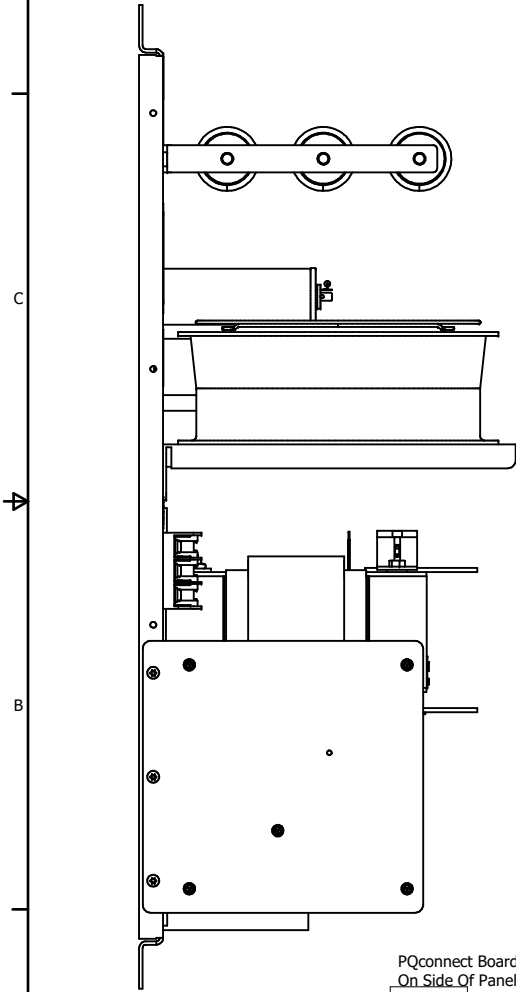


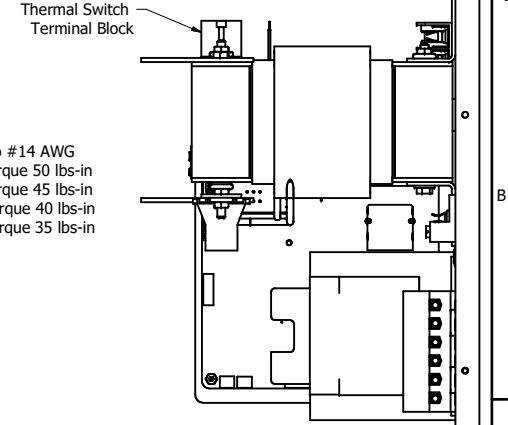
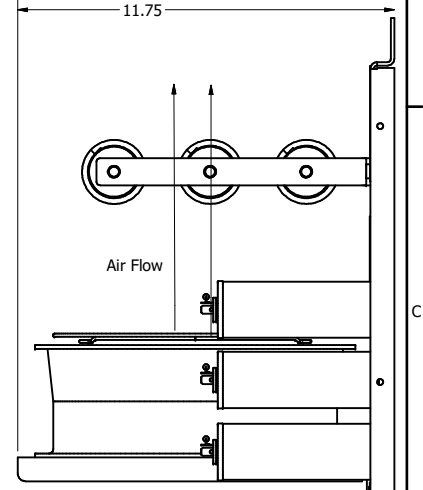
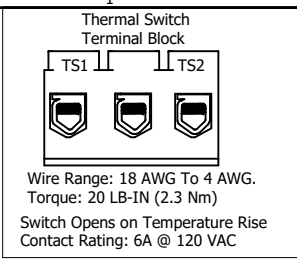
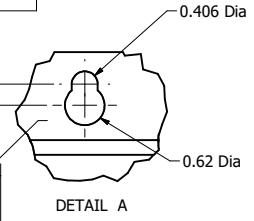
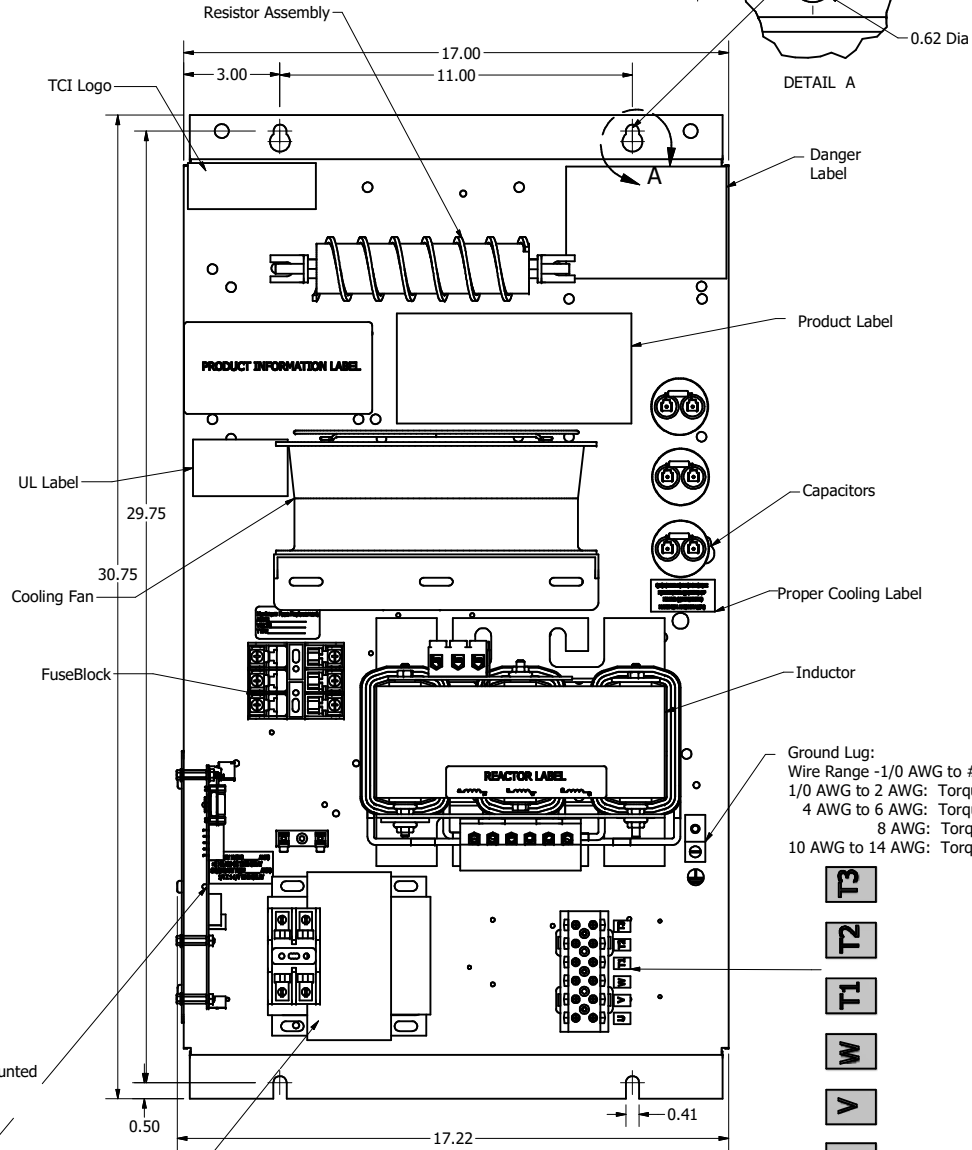
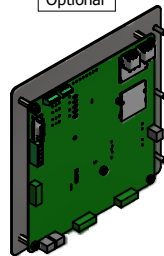
SineWave Part Number	Schematic Drawing#	Approx Weight (LBS)
KMG45C00A	24281-11A	114
KMG45C00P	24281-11P	115

HorsePower (HP)	kVar	Max Amps	Voltage (V)	HZ	Phase
40	4.3	45	600	60	3

D  
C  
B  
A



PQconnect Board Mounted On Side Of Panel  
Optional



Ground Lug:  
Wire Range -1/0 AWG to #14 AWG  
1/0 AWG to 2 AWG: Torque 50 lbs-in  
4 AWG to 6 AWG: Torque 45 lbs-in  
8 AWG: Torque 40 lbs-in  
10 AWG to 14 AWG: Torque 35 lbs-in



Power Block Connections  
Wire Range -1 AWG to #22 AWG  
1 AWG to 4 AWG: Torque 35 lbs-in  
6 AWG to 14 AWG: Torque 30 lbs-in  
16 AWG to 20 AWG: Torque 25 lbs-in  
22 AWG: Torque 20 lbs-in

Customer Is Responsible For Proper Cooling Of Components In Customers Assembly.  
Customer Is Responsible For Installation to Meet All National And Local Electrical Codes.

Material(s) Shall be RoHS Compliant

TCI, LLC CLAIMS PROPRIETARY RIGHTS IN THE MATERIAL HEREIN. DISCLOSED, IT IS SUPPLIED WITHOUT PREJUDICE TO ANY PATENT RIGHTS OF TCI AND MAY NOT BE REPRODUCED OR USED TO MANUFACTURE ANYTHING SHOWN THEREIN WITHOUT WRITTEN PERMISSION FROM TCI.				TOLERANCES (EXCEPT AS NOTED)		W132 N10611 Grant Drive Germantown, WI 53022 <b>KMG45C00- SineWave Filter</b> Open Panel, 40HP, 600V	
				DECIMAL		DWN BY: DSW DATE: 10/12/2016 FILE: 104420G SCALE: 1/8	
				.XX ±.25			
				.XXX ±.10			
				FRACTIONAL			
				± 1/16			
				ANGULAR			
				± 1°			
B	Add PQconnect Board	9/23/2020	DSW				
NO	REVISION	DATE	BY				