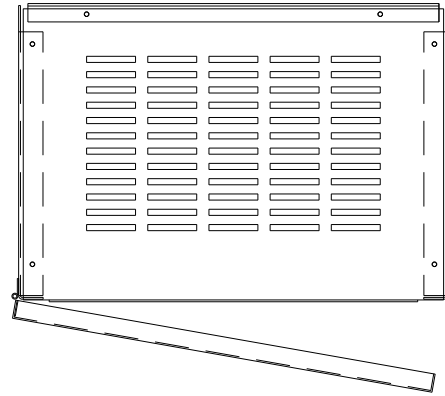
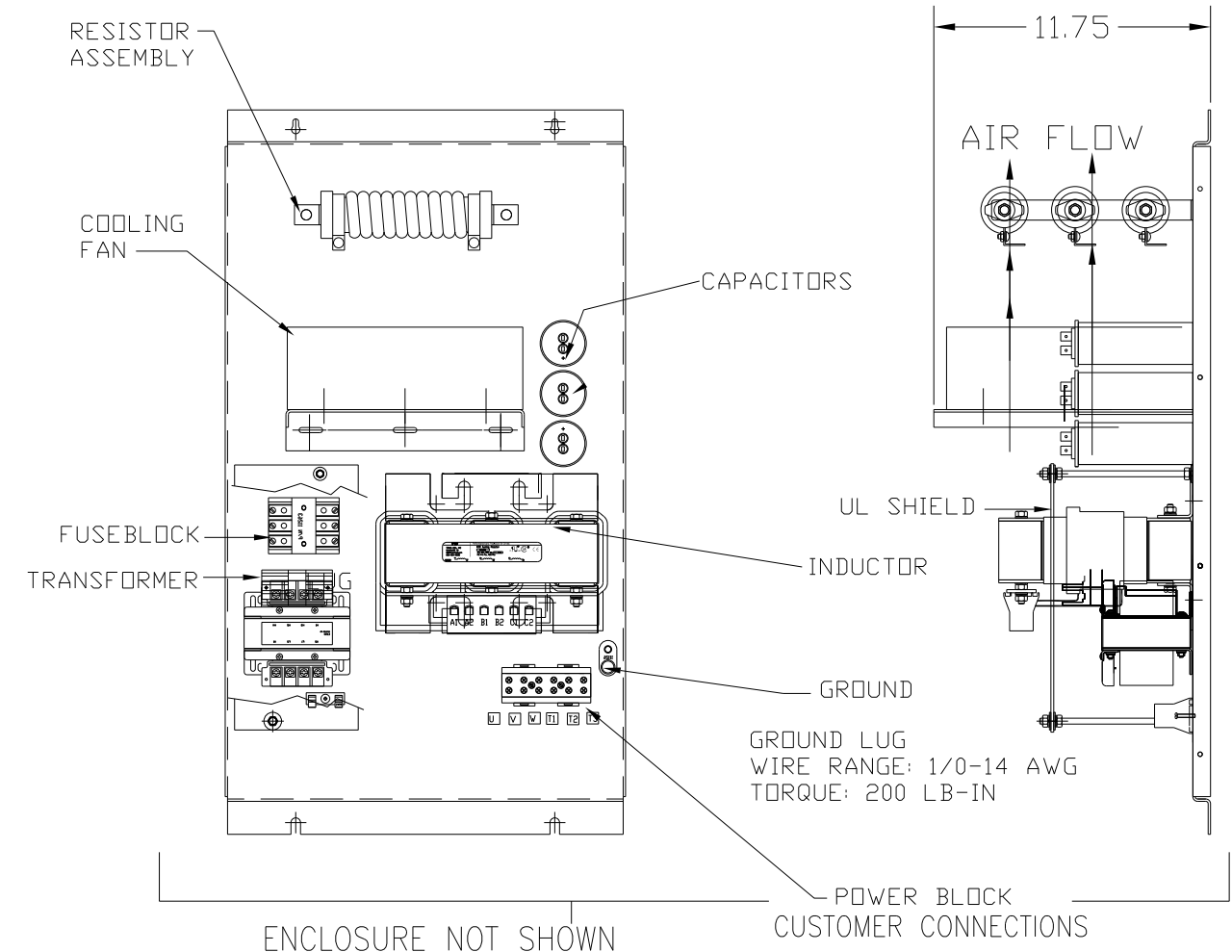
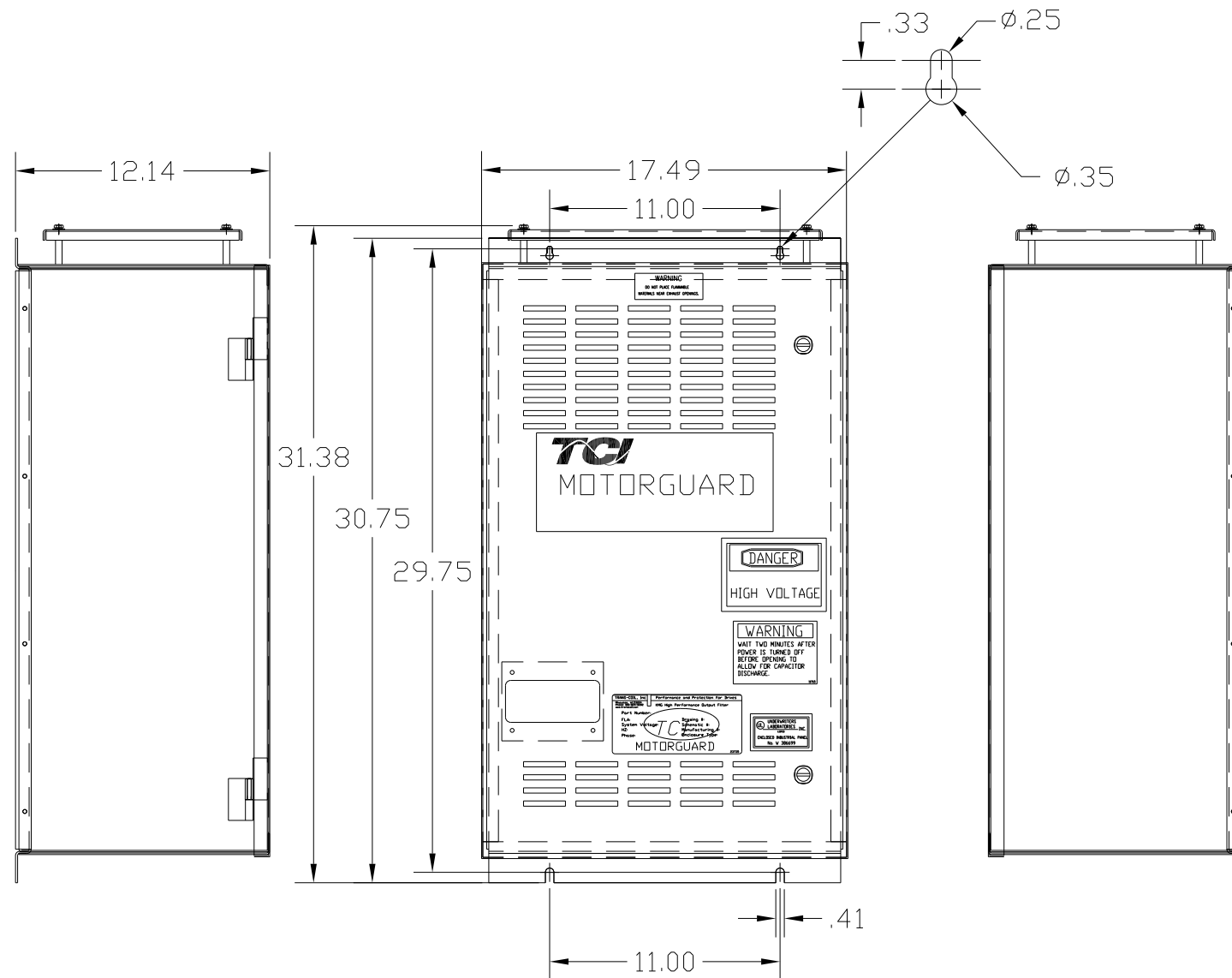


KMG45A01A
 APPROX WEIGHT: 154LBS

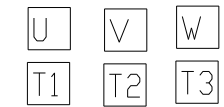


KMG HIGH PERFORMANCE OUTPUT FILTER
 PART NUMBER: KMG45A01A
 FLA: 45 DRAWING#: 104354DG
 SYSTEM VOLTAGE: 480 SCHEMATIC: 24281-1A
 HZ: 80
 PHASE: 3
 MOTORGUARD



FOR SCHEMATIC SEE DRAWING P/N 24281-1A

LINE CONNECTIONS
 WIRE RANGE: 1 AWG THRU 4 AWG 35 LB-IN
 6 AWG THRU 14 AWG 30 LB-IN
 16 AWG THRU 22 AWG 25 LB-IN



CUSTOMER IS RESPONSIBLE FOR PROPER
 INSTALLATION OF ASSEMBLY IN ACCORDANCE
 WITH LOCAL AND NATIONAL CODES.

| | | | | | |
|----|----------|------|----|---|---|
| | | | | TOLERANCES (EXCEPT AS NOTED): DECIMAL | 7878 N. 86th STREET MILWAUKEE, WI 53224 Standard SineWave Filter ENCLOSED, 30HP, 45AMP, 480V |
| | | | | .XX ± .02 | |
| | | | | .XXX ± .01 | |
| | | | | FRACTIONAL ± 1/32 | |
| | | | | ANGULAR ± 1/2° | |
| NO | REVISION | DATE | BY | SCALE | DRN. BY: DSW DATE: 10/07/2010 DWG. NO.: 104354DG SCALE: TO FIT APRVD. C SHT. 1 OF 1 |