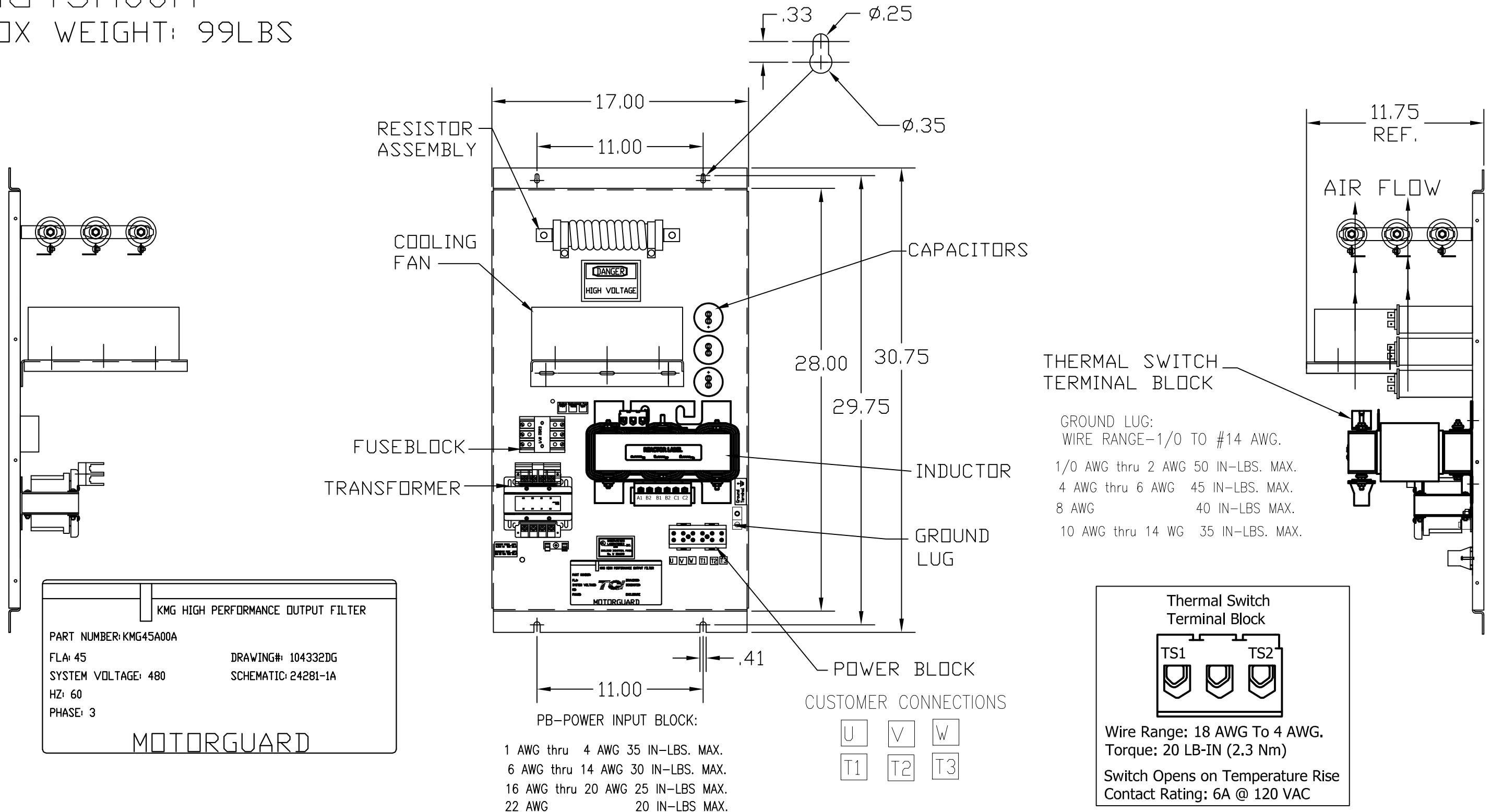


KMG45A00A

APPROX WEIGHT: 99LBS

FOR SCHEMATIC SEE DRAWING P/N 24281-1A



KMG HIGH PERFORMANCE OUTPUT FILTER

PART NUMBER: KMG45A00A

FLA: 45

SYSTEM VOLTAGE: 480

HZ: 60

PHASE: 3

DRAWING#: 104332DG

SCHEMATIC: 24281-1A

MOTORGUARD

THERMAL SWITCH TERMINAL BLOCK

GROUND LUG:
WIRE RANGE-1/0 TO #14 AWG.

1/0 AWG thru 2 AWG 50 IN-LBS. MAX.
4 AWG thru 6 AWG 45 IN-LBS. MAX.
8 AWG 40 IN-LBS. MAX.
10 AWG thru 14 AWG 35 IN-LBS. MAX.

Thermal Switch Terminal Block

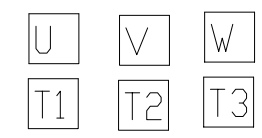
TS1 TS2

Wire Range: 18 AWG To 4 AWG.
Torque: 20 LB-IN (2.3 Nm)

Switch Opens on Temperature Rise
Contact Rating: 6A @ 120 VAC

PB-POWER INPUT BLOCK:

1 AWG thru 4 AWG 35 IN-LBS. MAX.
6 AWG thru 14 AWG 30 IN-LBS. MAX.
16 AWG thru 20 AWG 25 IN-LBS. MAX.
22 AWG 20 IN-LBS. MAX.



CUSTOMER IS RESPONSIBLE FOR PROPER COOLING OF COMPONENTS IN CUSTOMERS ASSEMBLY.

CUSTOMER IS RESPONSIBLE FOR PROPER INSTALLATION OF ASSEMBLY IN ACCORDANCE WITH LOCAL AND NATIONAL CODES.

				TOLERANCES (EXCEPT AS NOTED)
				DECIMAL
				.XX ±.02
				.XXX±.01
B	5256 ADDED T/S TB	05/12/20	JRN	FRACTIONAL ± 1/32
A	2731 GRD UPDATE	3/10/11	DSW	ANGULAR ± 1/2°
NO	REVISION	DATE	BY	

TCL 7878 N. 86th STREET
MILWAUKEE, WI 53224

Standard, SineWave Filter
Open, 30HP, 45AMP, 480V

DRN. BY	DATE	DWG. NO.
DSW	10/04/2010	B 104332DG
SCALE	APRVD.	
TO FIT		SHT.1 OF1