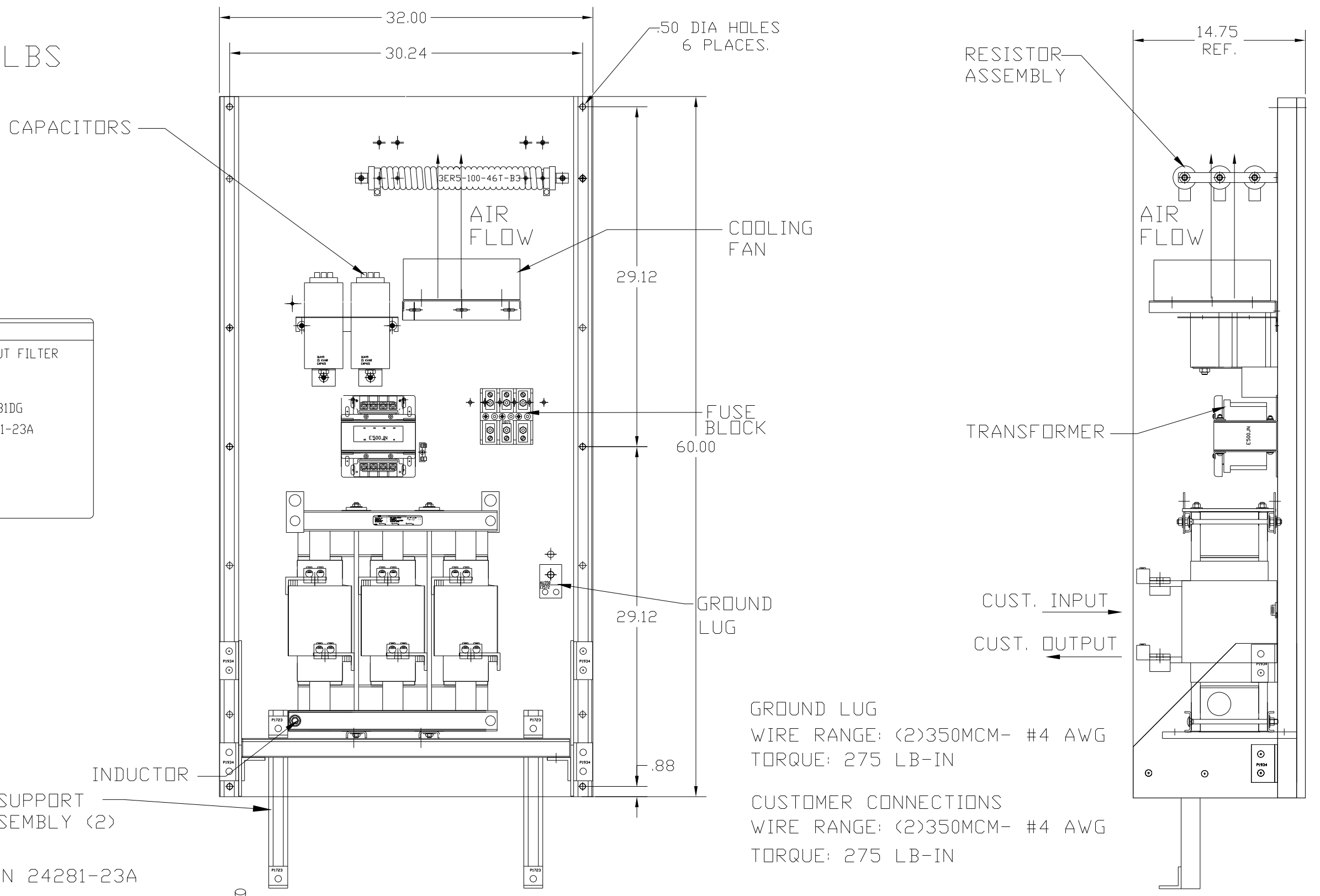


KMG420C00A
 APPROX WEIGHT: 634LBS

KMG HIGH PERFORMANCE OUTPUT FILTER

PART NUMBER: KMG420C00A
 FLA: 420
 SYSTEM VOLTAGE: 600
 HZ: 80
 PHASE: 3

MOTORGUARD



GROUND LUG
 WIRE RANGE: (2)350MCM- #4 AWG
 TORQUE: 275 LB-IN

CUSTOMER CONNECTIONS
 WIRE RANGE: (2)350MCM- #4 AWG
 TORQUE: 275 LB-IN

FOR SCHEMATIC SEE DRAWING P/N 24281-23A

CUSTOMER IS RESPONSIBLE FOR PROPER COOLING OF COMPONENTS IN CUSTOMERS ASSEMBLY

CUSTOMER IS RESPONSIBLE FOR PROPER INSTALLATION OF ASSEMBLY IN ACCORDANCE WITH LOCAL AND NATIONAL CODES.

| | | | | | |
|----|----------|------|----|------------------------------|---|
| | | | | TOLERANCES (EXCEPT AS NOTED) | 7878 N. 86th STREET MILWAUKEE, WI 53224 Standard, SineWave Filter Open, 400HP, 420AMP, 600V |
| | | | | DECIMAL | |
| | | | | .XX ± .02 .XXX ± .01 | |
| | | | | FRACTIONAL ± 1/32 | |
| | | | | ANGULAR ± 1/2° | DRN. BY DSW DATE 10/12/2010 DWG. NO. 104431DG |
| NO | REVISION | DATE | BY | SCALE TO FIT | APRVD. B SHT. 1 OF 1 |