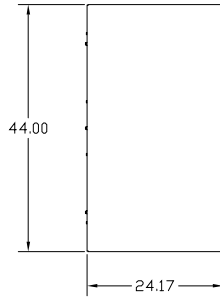
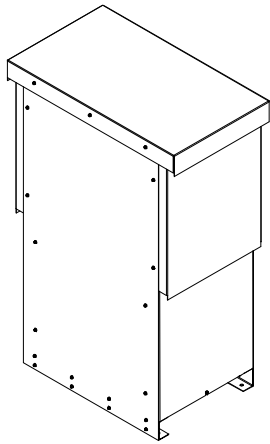


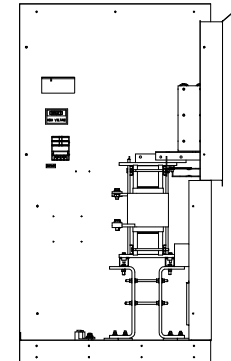
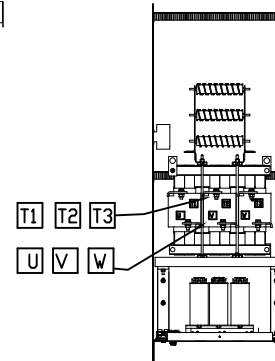
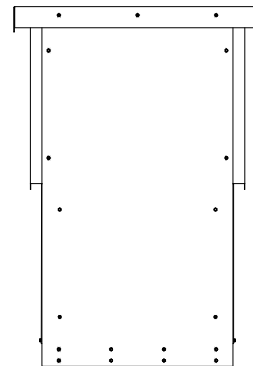
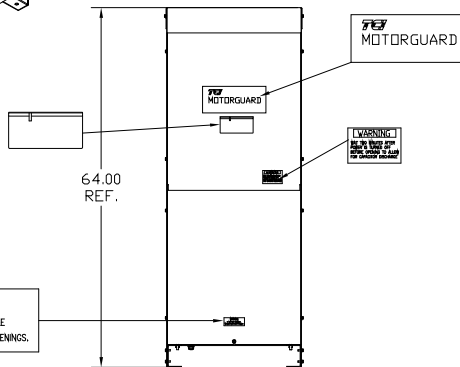
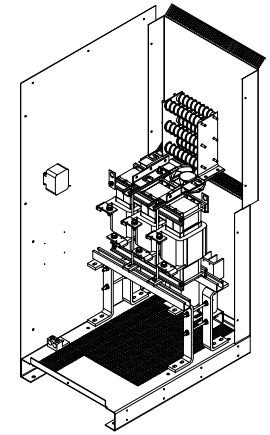
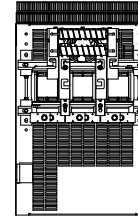
GENERAL PURPOSE, 1/3R, COLOR: WHITE.

FOR SCHEMATIC SEE DWG# 26736

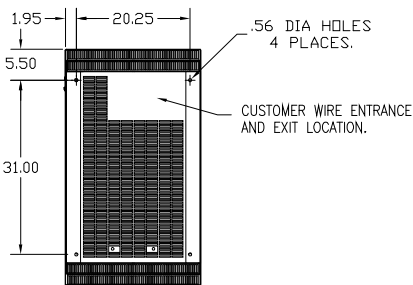
APPROX WT: 635LBS



KMG HIGH PERFORMANCE OUTPUT FILTER
 PART NUMBER: KMG420AG3R0000
 FLA: 420 DRAWING#: 103859DG
 SYSTEM VOLTAGE: 480V SCHEMATIC: 26736
 HZ: 60
 PHASE: 3 ENCLOSURE TYPE: 1/3R
MOTORGUARD



WARNING
DO NOT PLACE FLAMMABLE MATERIALS NEAR EXHAUST OPENINGS.



PART NUMBER: KMG420AG3R0000

CUSTOMER IS RESPONSIBLE FOR INSTALLATION TO MEET ALL NATIONAL AND LOCAL ELECTRICAL CODES.

				TELEWORKS SCRIPT # 0000	TCI V132 110611 GRANT DRIVE GERMANTOWN, VT. 53022
				.XX ± .50 .XXX ± .25 PRECISION ± 1/32	
A	3251 TOP WAS 42"	1/7/15	BWM	DESIGNED BY	10/08/08
NO	REVISION	DATE	BY	± 1/2"	DESIGNED BY TO FIT
					D 103859DG SHEET 1 OF 1