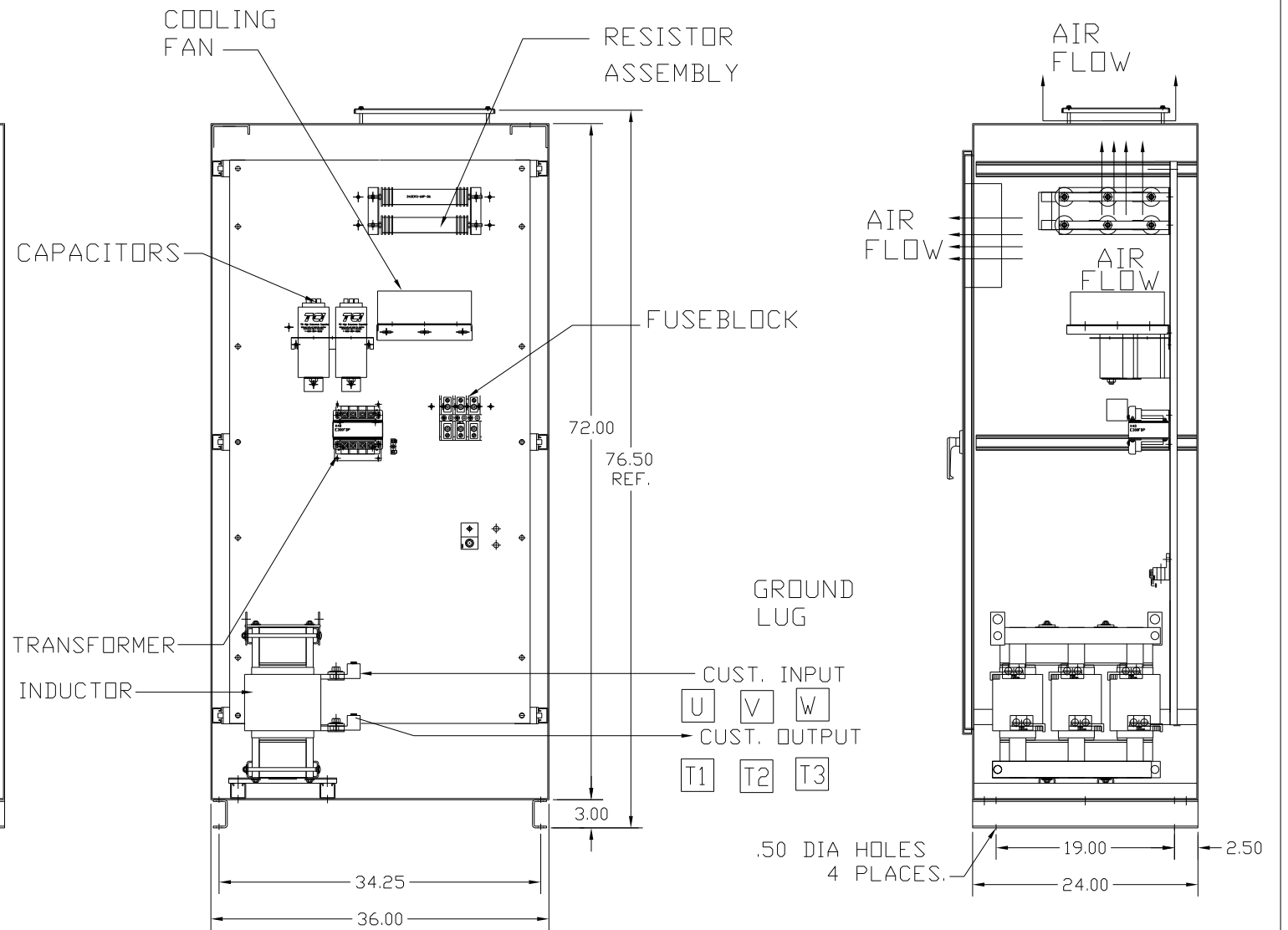
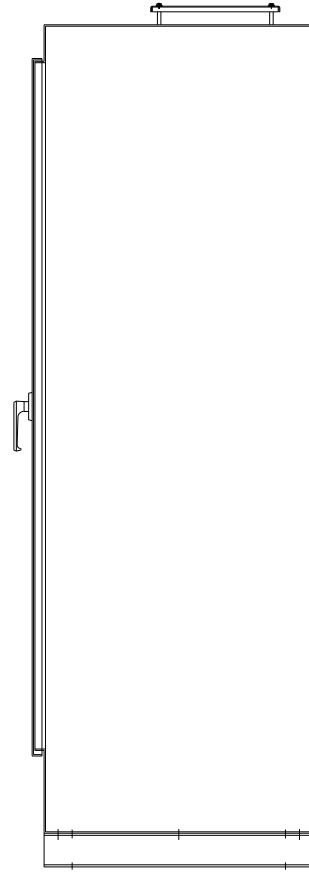
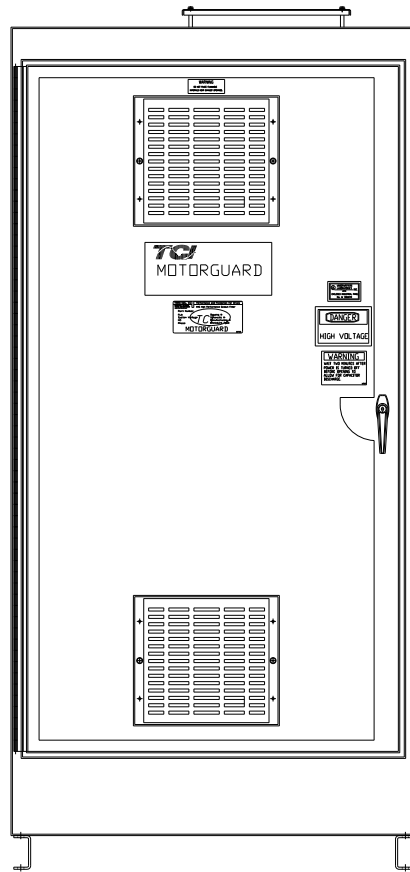
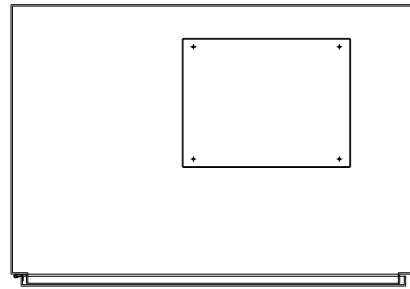


KMG420A01A
 APPROX WEIGHT: 914LBS

FOR SCHEMATIC SEE DRAWING P/N 24281-3A


GROUND LUG
 WIRE RANGE: (2)600MCM-2
 TORQUE: 500 LB-IN

LINE CONNECTIONS
 WIRE RANGE: (2)600MCM-2
 TORQUE: 500 LB-IN



KMG HIGH PERFORMANCE OUTPUT FILTER
 PART NUMBER: KMG420A01A
 FLA: 420
 SYSTEM VOLTAGE: 480
 HZ: 80
 PHASE: 3
 DRAWING#: 104365DG
 SCHEMATIC: 24281-3A
MOTORGUARD

CUSTOMER IS RESPONSIBLE FOR PROPER
 INSTALLATION OF ASSEMBLY IN ACCORDANCE
 WITH LOCAL AND NATIONAL CODES.

				TOLERANCES (EXCEPT AS NOTED): DECIMAL	 7878 N. 86th STREET MILWAUKEE, WI 53224 Standard, SineWave Filter ENCLOSED, 350HP, 420AMP, 480V
				.XX ± .02	
				.XXX ± .01	
				FRACTIONAL ± 1/32	
				ANGULAR ± 1/2°	DRN. BY: DSW SCALE: TO FIT
NO	REVISION	DATE	BY		DATE: 10/07/2010 APRVD. DWG. NO. 104365DG SHT. 1 OF 1