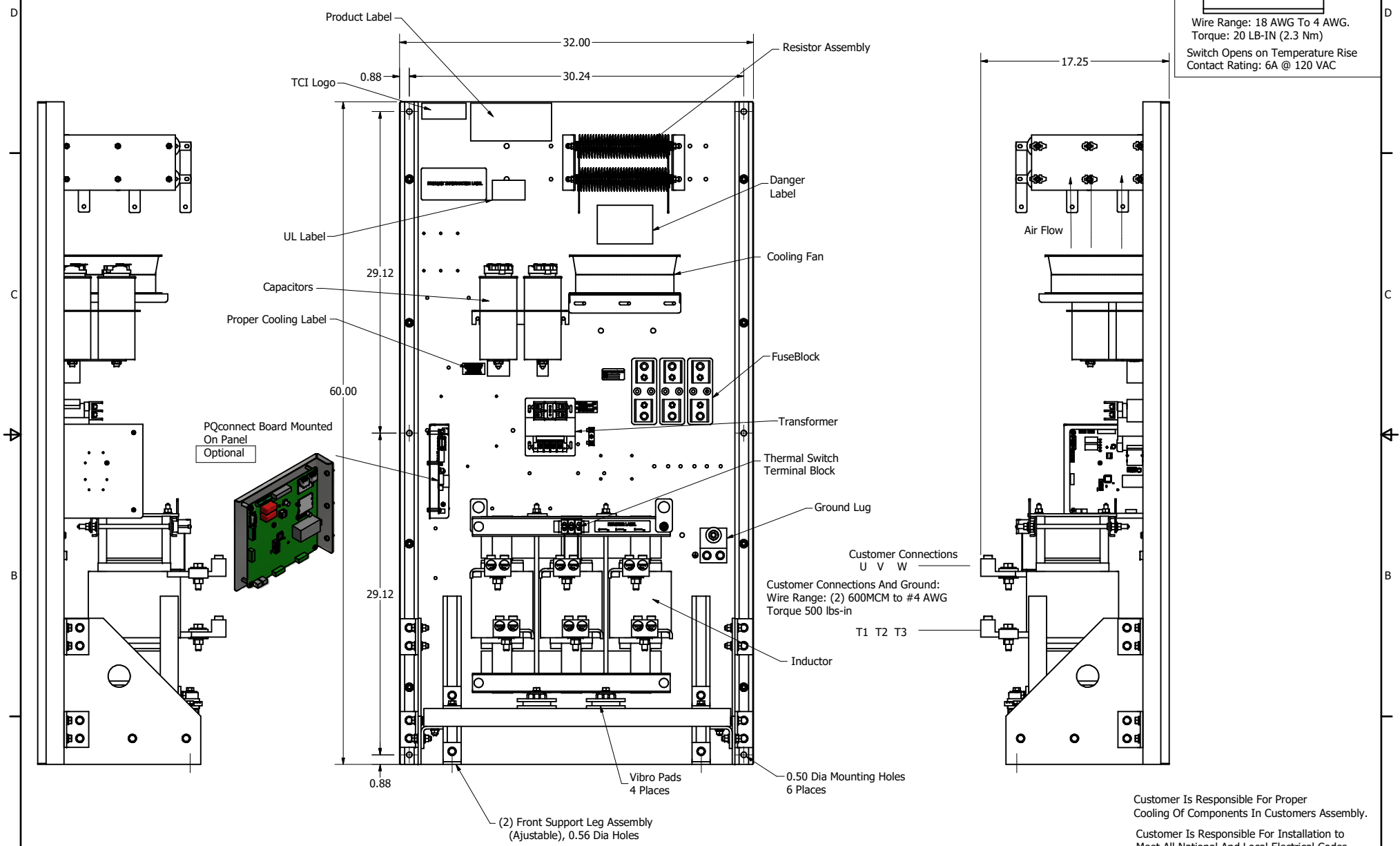
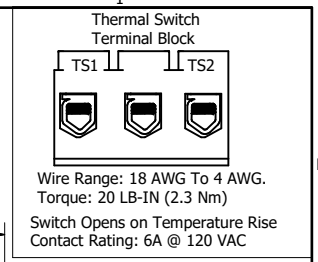


SineWave Part Number	Schematic Drawing#	Approx Weight (LBS)
KMG420A00A	24281-3A	580
KMG420A00P	24281-3P	585

HorsePower (HP)	kVar	Max Amps	Voltage (V)	HZ	Phase
350	30	420	480	60	3



Customer Is Responsible For Proper Cooling Of Components In Customers Assembly.

Customer Is Responsible For Installation to Meet All National And Local Electrical Codes.

Material(s) Shall be RoHS Compliant

TCI, LLC CLAIMS PROPRIETARY RIGHTS IN THE MATERIAL HEREIN DISCLOSED. IT IS SUPPLIED WITHOUT PREJUDICE TO ANY PATENT RIGHTS OF TCI AND MAY NOT BE REPRODUCED OR USED TO MANUFACTURE ANYTHING SHOWN THEREIN WITHOUT WRITTEN PERMISSION FROM TCI.					TOLERANCES (EXCEPT AS NOTED) DECIMAL .XX ± .25 .XXX ± .10 FRACTIONAL ± 1/16 ANGULAR ± 1°	TCI W132 N10611 Grant Drive Germantown, WI 53022 KMG420A00-, SineWave Filter Open Panel, 350HP, 480V DWN BY: DSW DATE: 10/07/2016 104343DG SCALE: 1/5 DRAWN: FILE: SHEET 1 OF 1
	B	Add PQconnect Board	9/11/2020	DSW		
	NO	REVISION	DATE	BY		