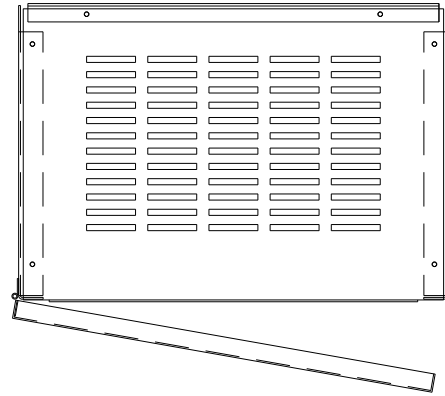


KMG35C01A
 APPROX WEIGHT: 153LBS



KMG HIGH PERFORMANCE OUTPUT FILTER

PART NUMBER: KMG35C01A

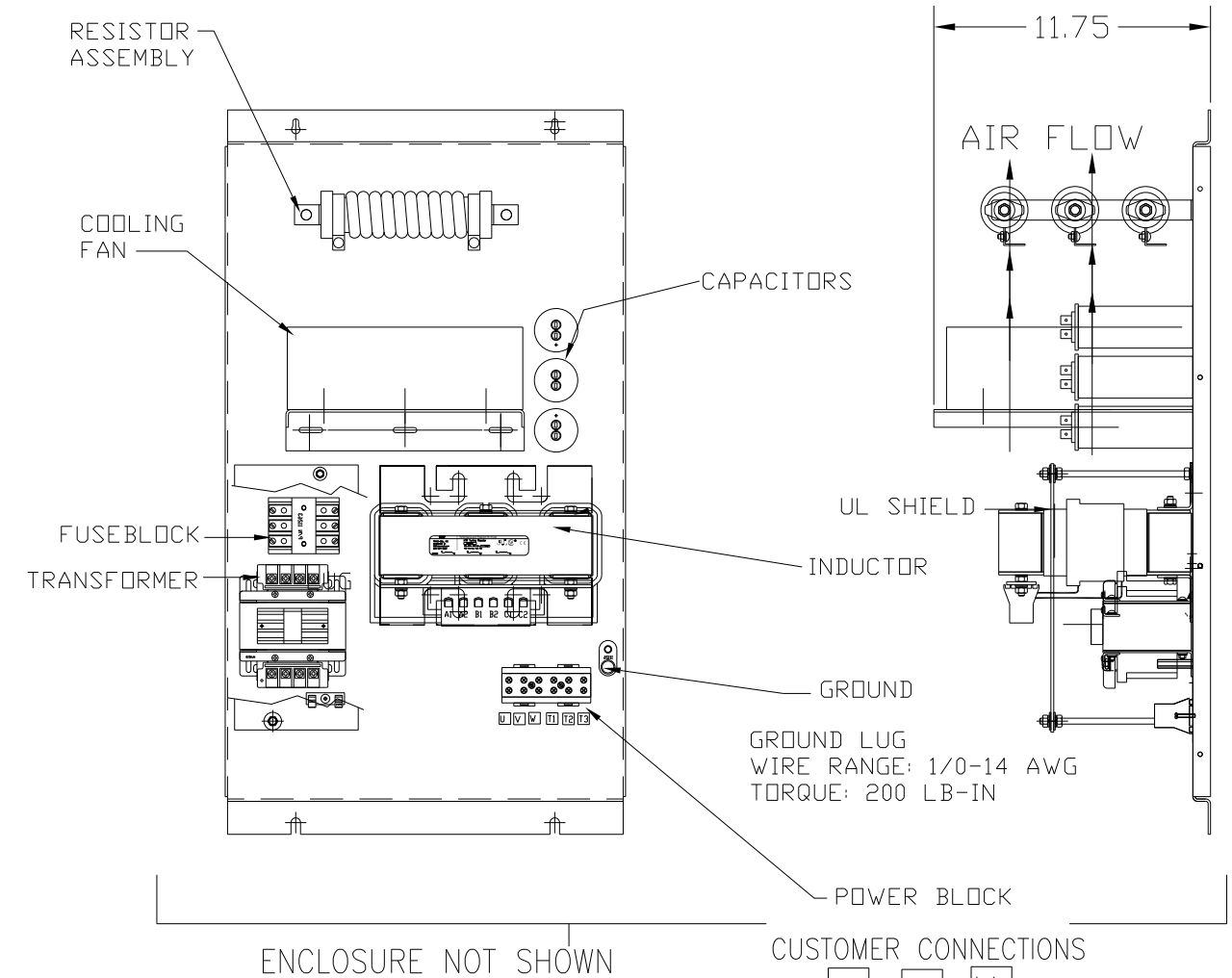
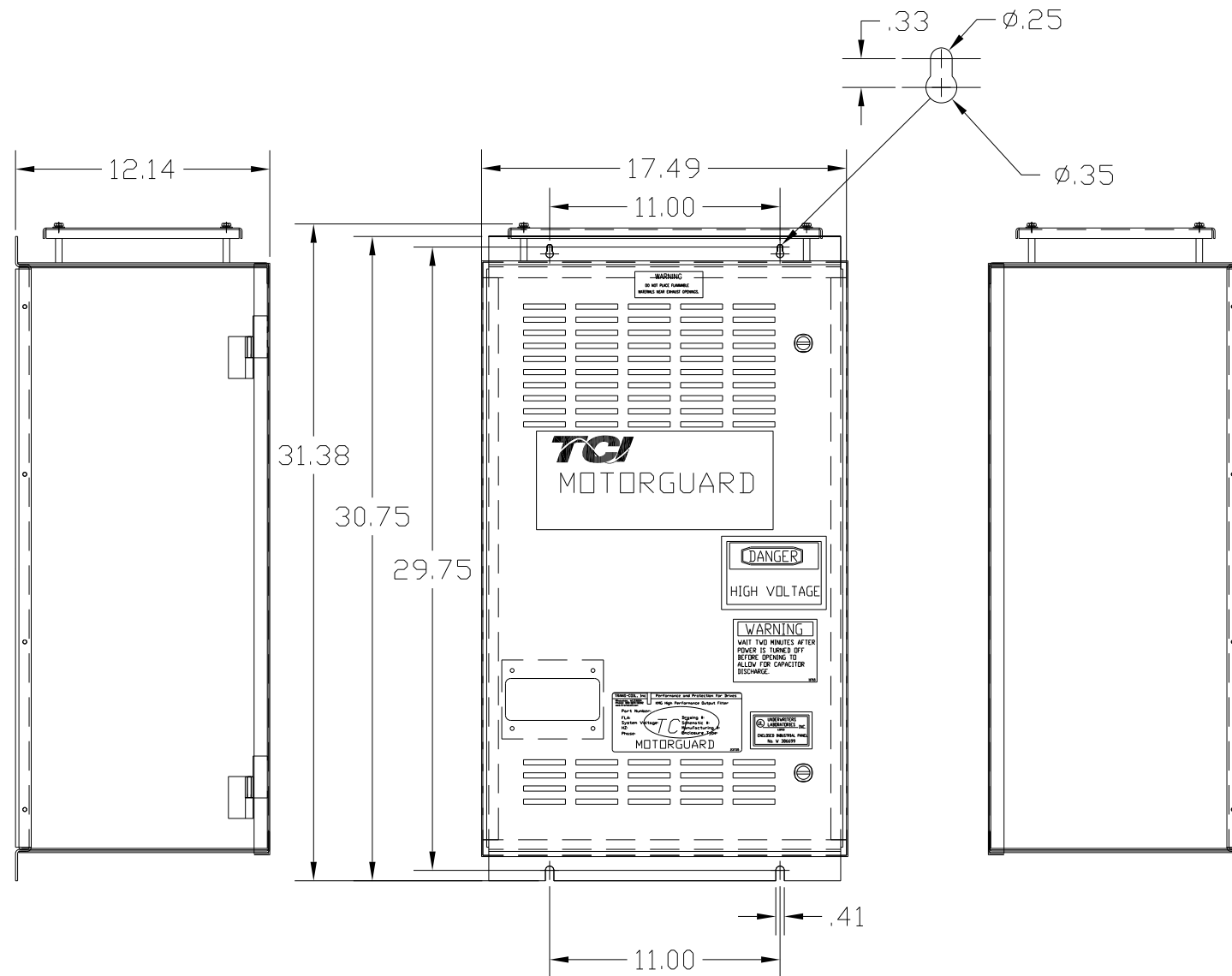
FLA: 35 DRAWING#: 104440DG

SYSTEM VOLTAGE: 600 SCHEMATIC: 24281-11A

HZ: 80

PHASE: 3

MOTORGUARD



FOR SCHEMATIC SEE DRAWING P/N 24281-11A

CUSTOMER IS RESPONSIBLE FOR PROPER
 INSTALLATION OF ASSEMBLY IN ACCORDANCE
 WITH LOCAL AND NATIONAL CODES.

				TOLERANCES (EXCEPT AS NOTED):	7878 N. 86th STREET MILWAUKEE, WI 53224 Standard, SineWave Filter ENCLOSED 30HP, 35AMP, 600V
				DECIMAL	
				.XX ± .02 .XXX ± .01	
				FRACTIONAL ± 1/32	
				ANGULAR ± 1/2°	DRN. BY: DSW DATE: 10/14/2010 DWG. NO.: 104440DG SCALE: TO FIT APRVD.: SHT. 1 OF 1