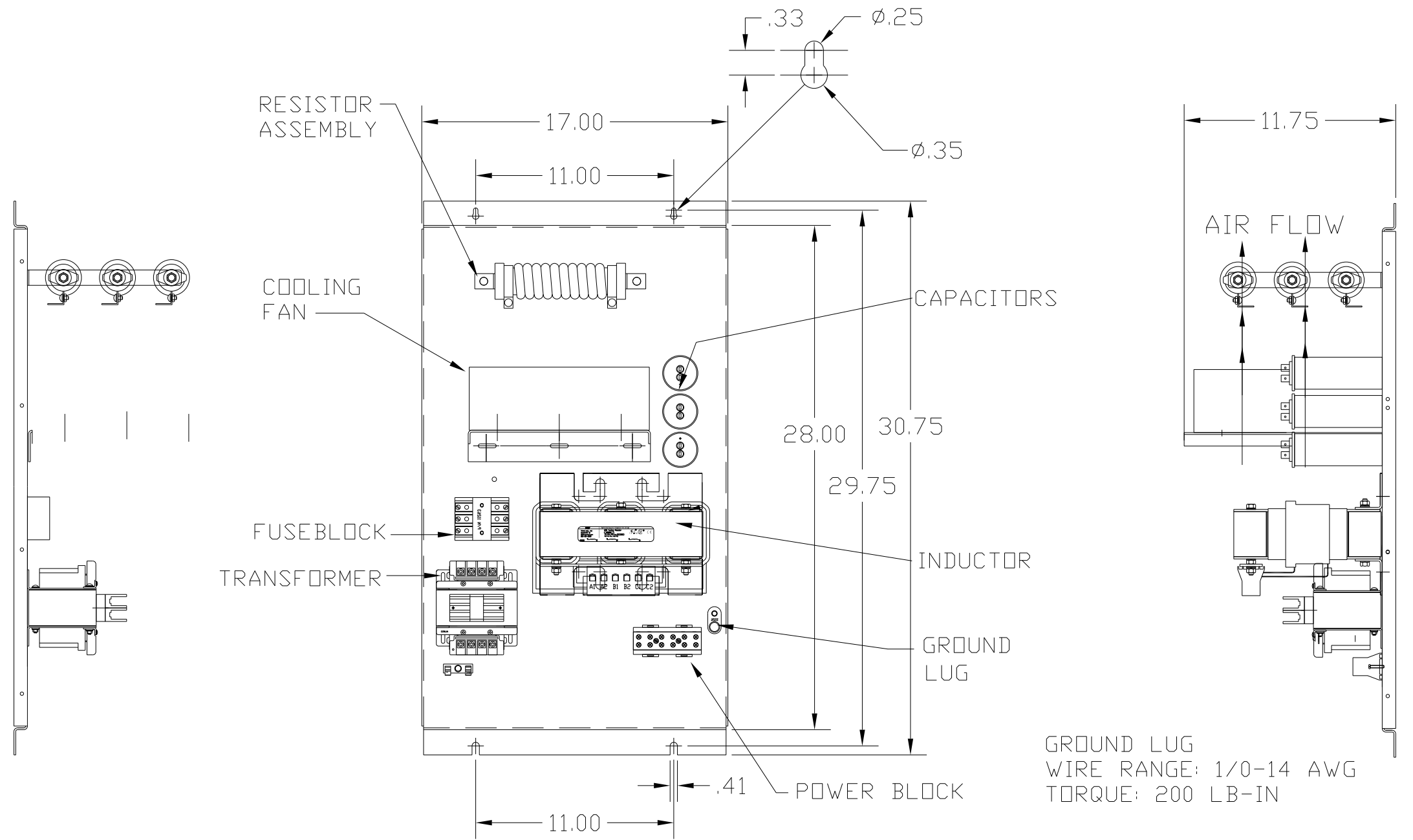


KMG35C00A

APPROX WEIGHT: 99LBS

KMG HIGH PERFORMANCE OUTPUT FILTER	
PART NUMBER: KMG35C00A	
FLA: 35	DRAWING#: 104419DG
SYSTEM VOLTAGE: 600	SCHEMATIC: 24281-11A
HZ: 80	
PHASE: 3	
MOTORGUARD	




CUSTOMER CONNECTIONS

WIRE RANGE: 1 AWG THRU 4 AWG 35 LB-IN
 6 AWG THRU 14 AWG 30 LB-IN
 16 AWG THRU 22 AWG 25 LB-IN

FOR SCHEMATIC SEE DRAWING P/N 24281-11A

CUSTOMER IS RESPONSIBLE FOR PROPER COOLING OF COMPONENTS IN CUSTOMERS ASSEMBLY.

CUSTOMER IS RESPONSIBLE FOR PROPER INSTALLATION OF ASSEMBLY IN ACCORDANCE WITH LOCAL AND NATIONAL CODES.

				TOLERANCES (EXCEPT AS NOTED)	 7878 N. 86th STREET MILWAUKEE, WI 53224
				DECIMAL	
				.XX ± .02	
				.XXX ± .01	
				FRACTIONAL	Standard, SineWave Filter Open, 30HP, 35AMP, 600V
				± 1/32	
				ANGULAR	
				± 1/2°	DRN. BY DSW DATE 10/12/2010 DWG. NO. 104419DG SCALE TO FIT APRVD. B
NO	REVISION	DATE	BY		SHT. 1 OF 1