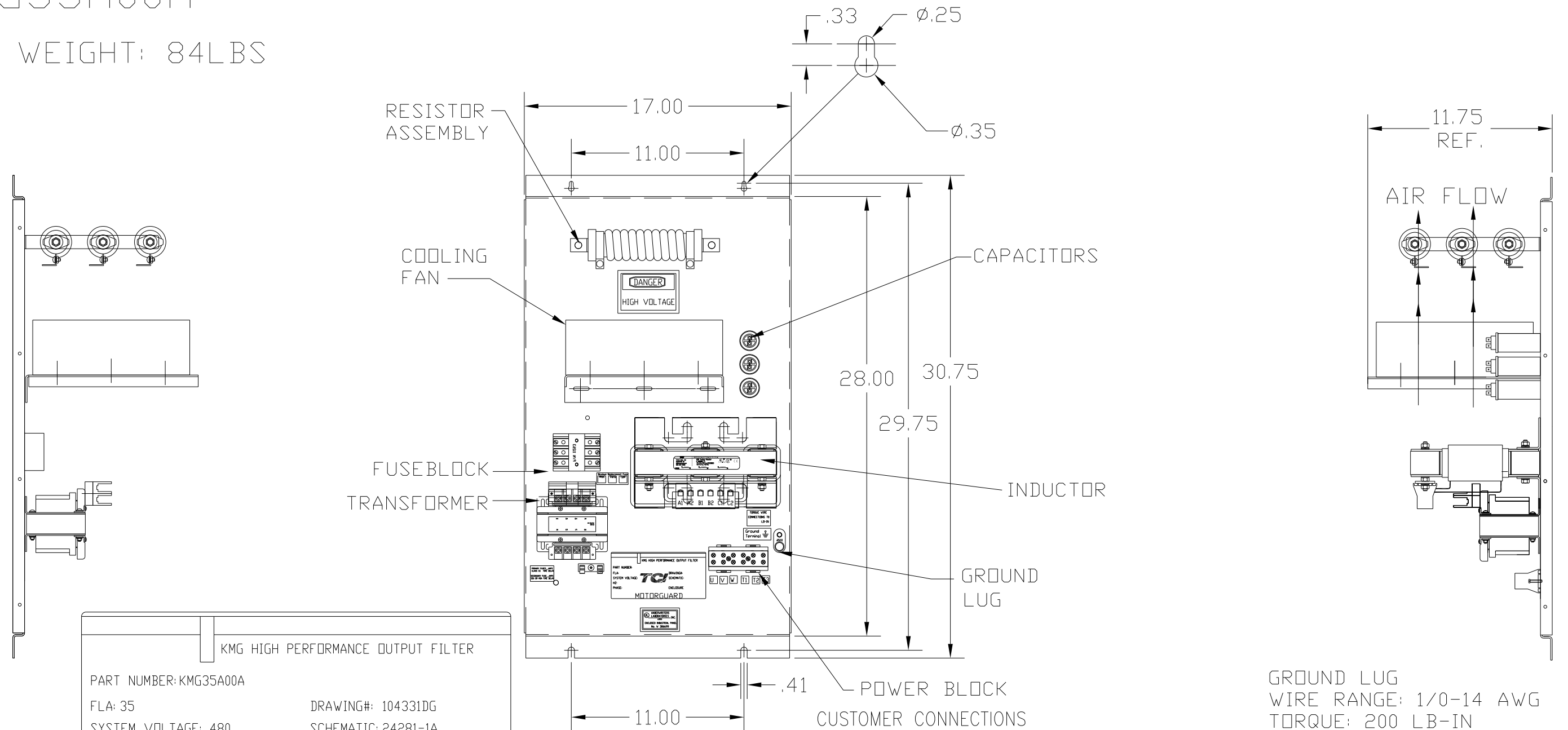


# KMG35A00A

APPROX WEIGHT: 84LBS

FOR SCHEMATIC SEE DRAWING P/N 24281-1A



KMG HIGH PERFORMANCE OUTPUT FILTER

PART NUMBER: KMG35A00A  
 FLA: 35  
 SYSTEM VOLTAGE: 480  
 HZ: 80  
 PHASE: 3

DRAWING#: 104331DG  
 SCHEMATIC: 24281-1A  
 ENCLOSURE TYPE: 1

**MOTORGUARD**

POWER BLOCK  
 CUSTOMER CONNECTIONS

U	V	W
T1	T2	T3

CUSTOMER CONNECTIONS  
 WIRE RANGE: 1 AWG THRU 4 AWG 35 LB-IN  
 6 AWG THRU 14 AWG 30 LB-IN  
 16 AWG THRU 22 AWG 25 LB-IN

GROUND LUG  
 WIRE RANGE: 1/0-14 AWG  
 TORQUE: 200 LB-IN

CUSTOMER IS RESPONSIBLE FOR PROPER COOLING OF COMPONENTS IN CUSTOMERS ASSEMBLY.

CUSTOMER IS RESPONSIBLE FOR PROPER INSTALLATION OF ASSEMBLY IN ACCORDANCE WITH LOCAL AND NATIONAL CODES.

NO	REVISION	DATE	BY

TOLERANCES (EXCEPT AS NOTED)
DECIMAL
.XX ± .02
.XXX ± .01
FRACTIONAL
± 1/32
ANGULAR
± 1/2°

**TCL** 7878 N. 86th STREET  
 MILWAUKEE, WI 53224

Standard, SineWave Filter  
 Open, 25HP, 35AMP, 480V

DRN. BY	DSW	DATE	10/04/2010	DWG. NO.	104331DG
SCALE	TO FIT	APRVD.		B	SHT. 1 OF 1