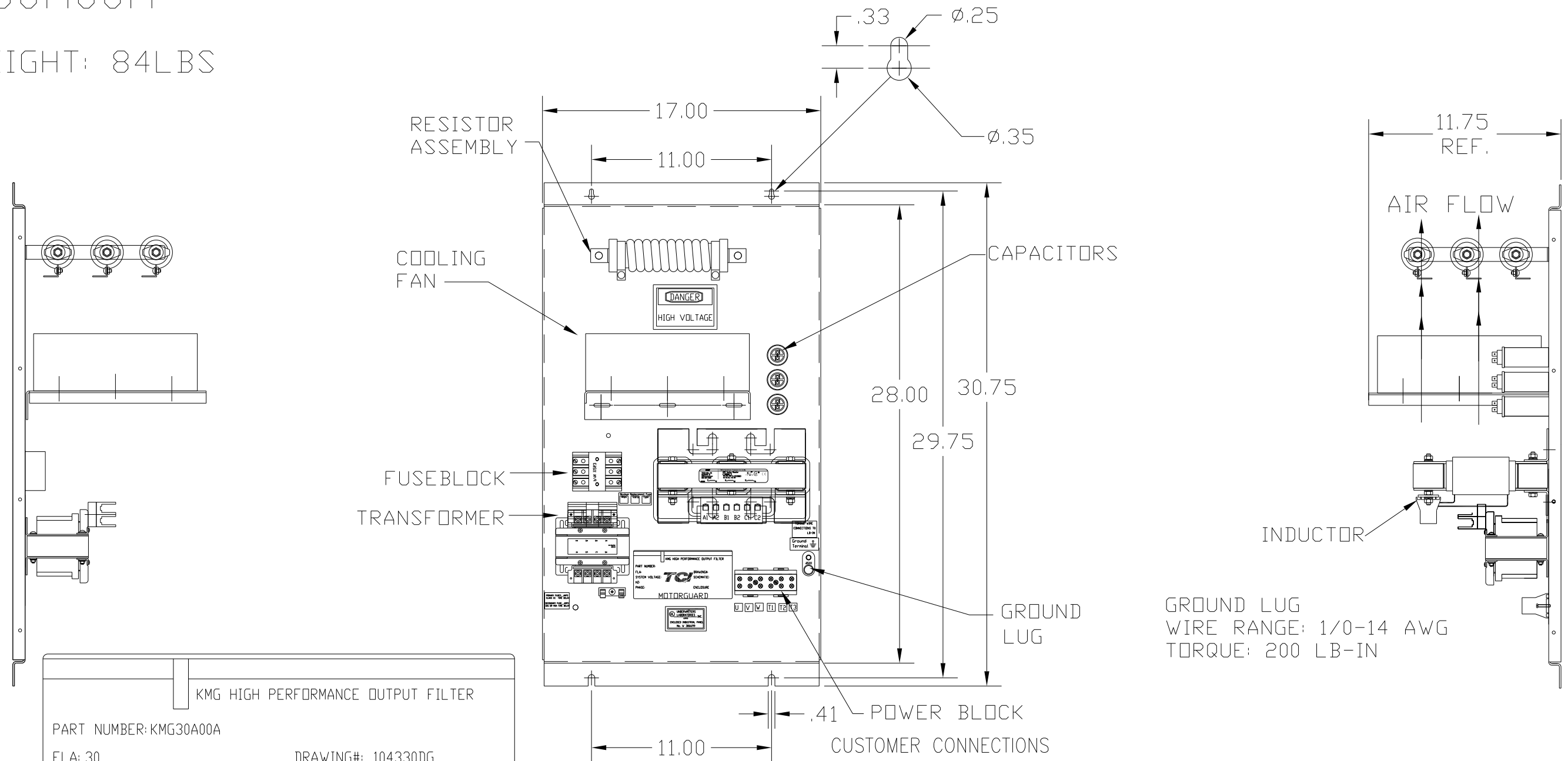


KMG30A00A

APPROX WEIGHT: 84LBS

FOR SCHEMATIC SEE DRAWING P/N 24281-1A



KMG HIGH PERFORMANCE OUTPUT FILTER

PART NUMBER: KMG30A00A

FLA: 30 DRAWING#: 104330DG

SYSTEM VOLTAGE: 480 SCHEMATIC: 24281-1A

HZ: 80

PHASE: 3

MOTORGUARD

GROUND LUG
WIRE RANGE: 1/0-14 AWG
TORQUE: 200 LB-IN

LINE CONNECTIONS
WIRE RANGE: 1 AWG THRU 4 AWG 35 LB-IN
6 AWG THRU 14 AWG 30 LB-IN
16 AWG THRU 22 AWG 25 LB-IN

CUSTOMER IS RESPONSIBLE FOR PROPER COOLING OF COMPONENTS IN CUSTOMERS ASSEMBLY.

CUSTOMER IS RESPONSIBLE FOR PROPER INSTALLATION OF ASSEMBLY IN ACCORDANCE WITH LOCAL AND NATIONAL CODES.

NO	REVISION	DATE	BY

TOLERANCES (EXCEPT AS NOTED)
DECIMAL
.XX ± .02
.XXX ± .01
FRACTIONAL
± 1/32
ANGULAR
± 1/2°

TCL 7878 N. 86th STREET
MILWAUKEE, WI 53224

Standard, SineWave Filter
Open, 20HP, 30AMP, 480V

DRN. BY DSW DATE 10/04/2010 DWG. NO. 104330DG

SCALE TO FIT APRVD. B

SHT. 1 OF 1