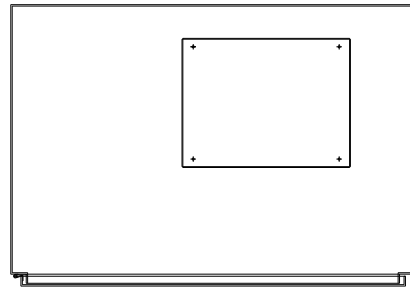


KMG305C01A
 APPROX WEIGHT: 768LBS

FOR SCHEMATIC SEE DRAWING P/N 24281-23A



KMG HIGH PERFORMANCE OUTPUT FILTER

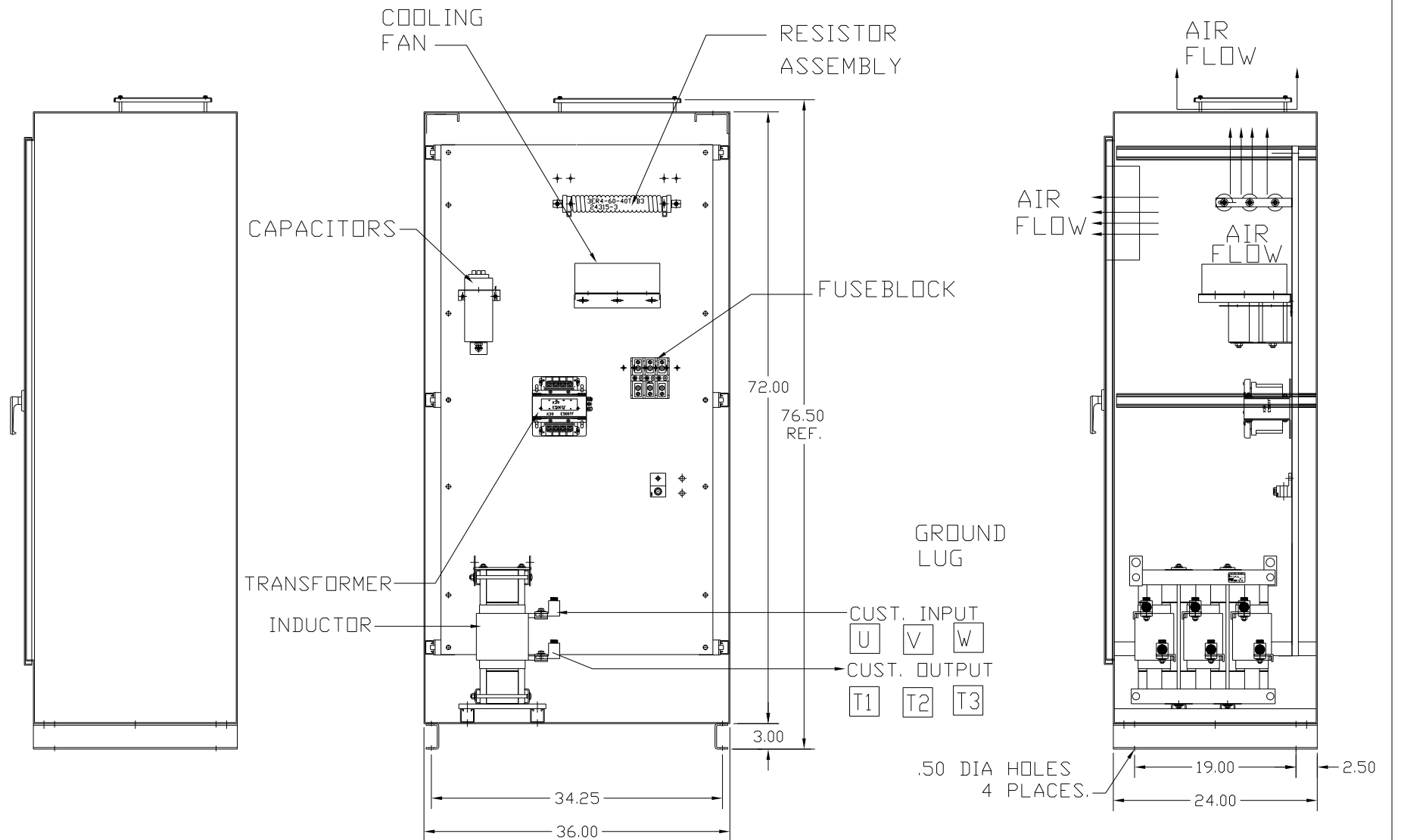
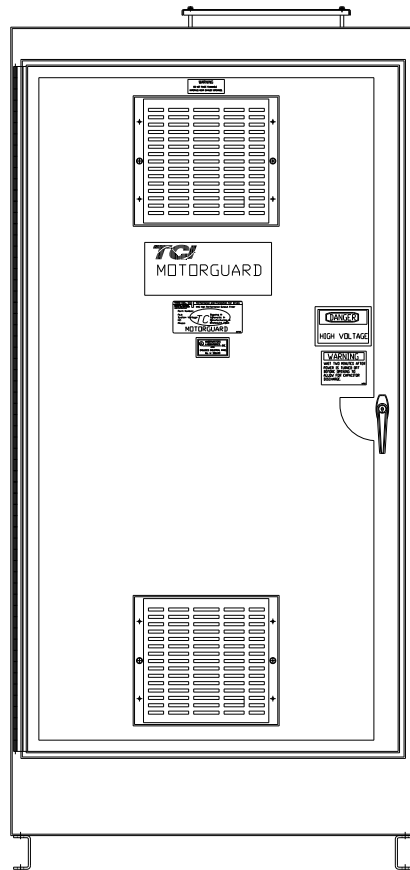
PART NUMBER: KMG305C01A

FLA: 305 DRAWING#: 104450DG
 SYSTEM VOLTAGE: 600 SCHEMATIC: 24281-23A
 HZ: 80
 PHASE: 3

MOTORGUARD

GROUND LUG
 WIRE RANGE: (1)600MCM-#4 AWG
 (2)250MCM-1/0 AWG
 TORQUE: 500 LB-IN

LINE CONNECTIONS
 WIRE RANGE: (1)600MCM-#4 AWG
 (2)250MCM-1/0 AWG
 TORQUE: 500 LB-IN



CUSTOMER IS RESPONSIBLE FOR PROPER
 INSTALLATION OF ASSEMBLY IN ACCORDANCE
 WITH LOCAL AND NATIONAL CODES.

				TOLERANCES (EXCEPT AS NOTED)		7878 N. 86th STREET MILWAUKEE, WI 53224	
				DECIMAL			
				.XX ± .02		Standard, SineWave Filter ENCLOSED, 300HP, 305AMP, 600V	
				.XXX ± .01			
				FRACTIONAL		DRN. BY DSW DATE 10/18/10 DWG. NO. 104450DG	
				± 1/32		SCALE TO FIT APRVD. C	
				ANGULAR		SHT. 1 OF 1	
				± 1/2°			
NO	REVISION	DATE	BY				