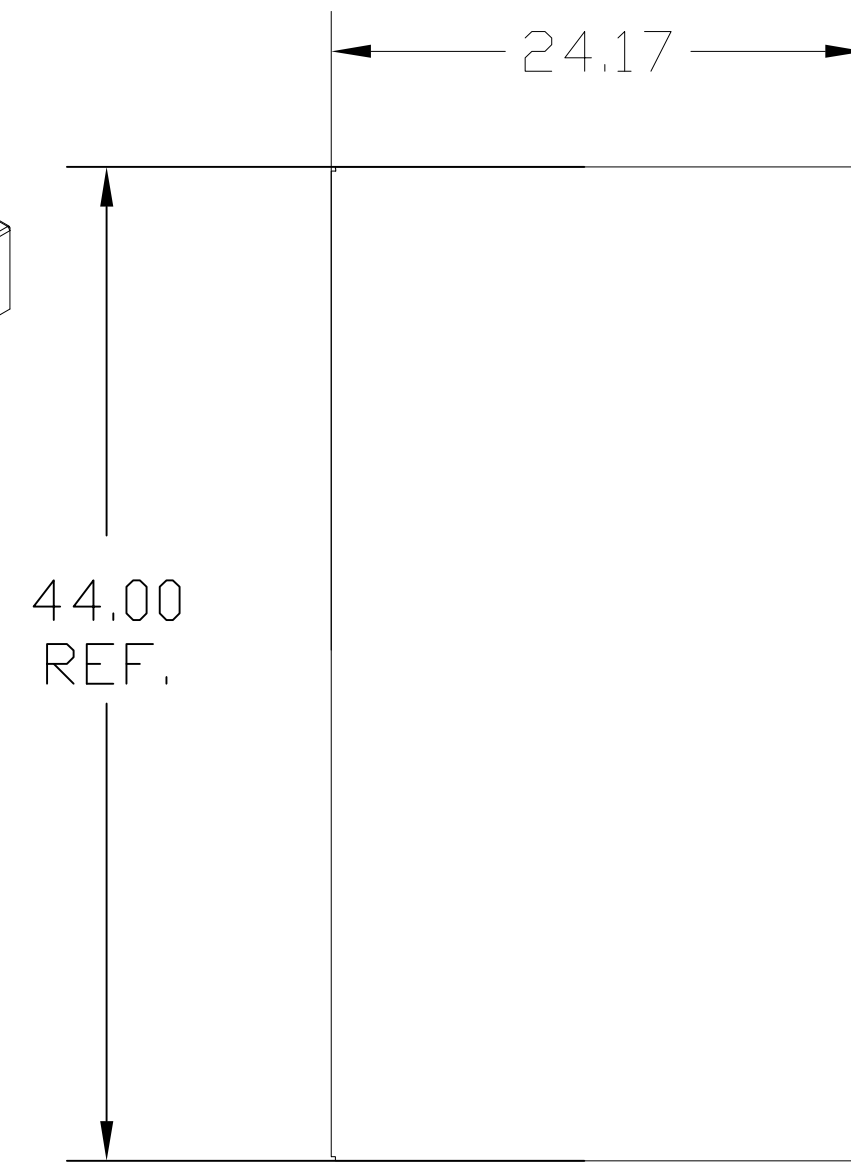
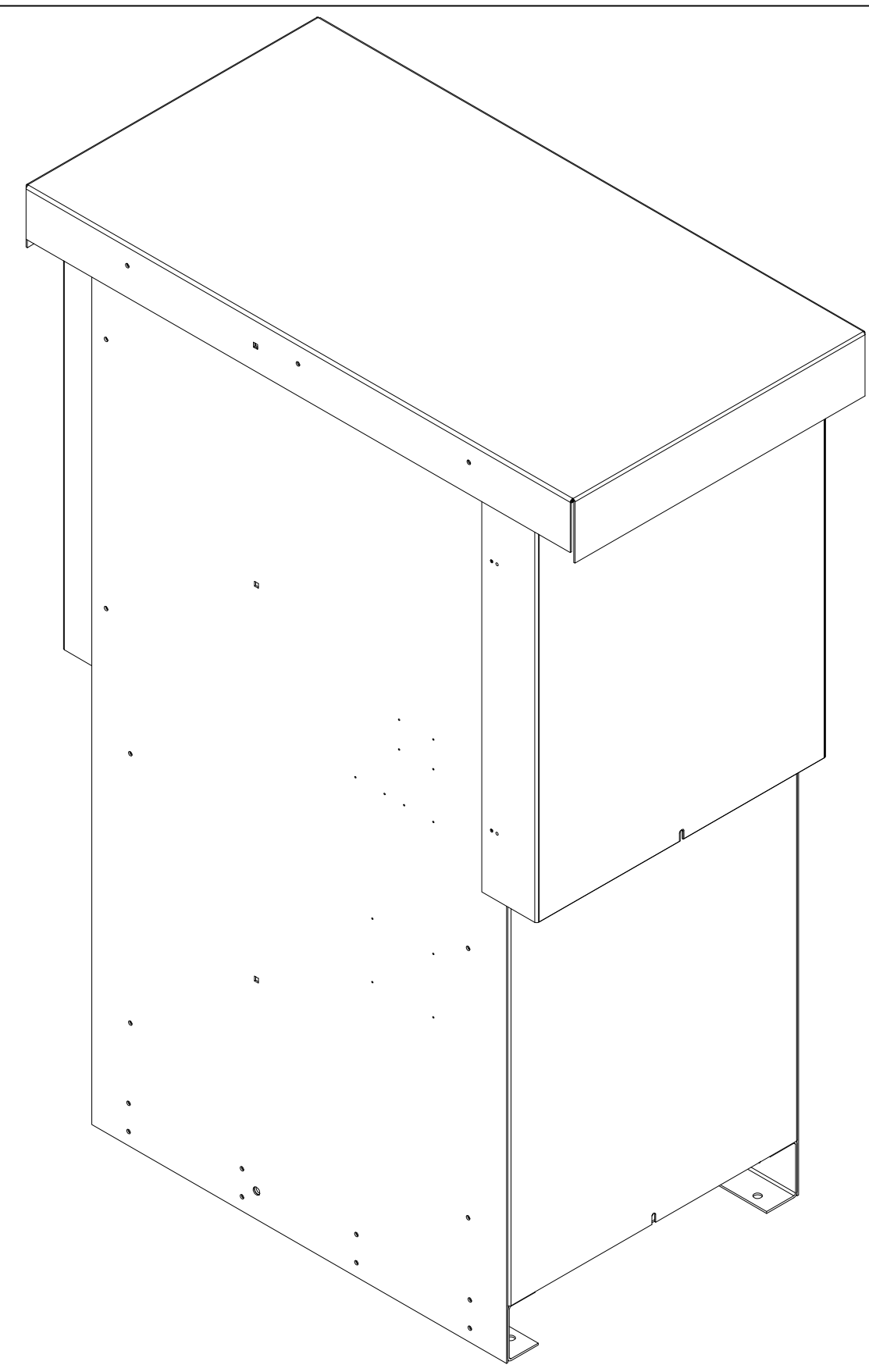


GENERAL PURPOSE, 1/3R, COLOR: GREY.

APPROX WT: 625LBS



KMG HIGH PERFORMANCE OUTPUT FILTER

PART NUMBER: KMG305AG010000

FLA: 305 DRAWING#: 103890DG

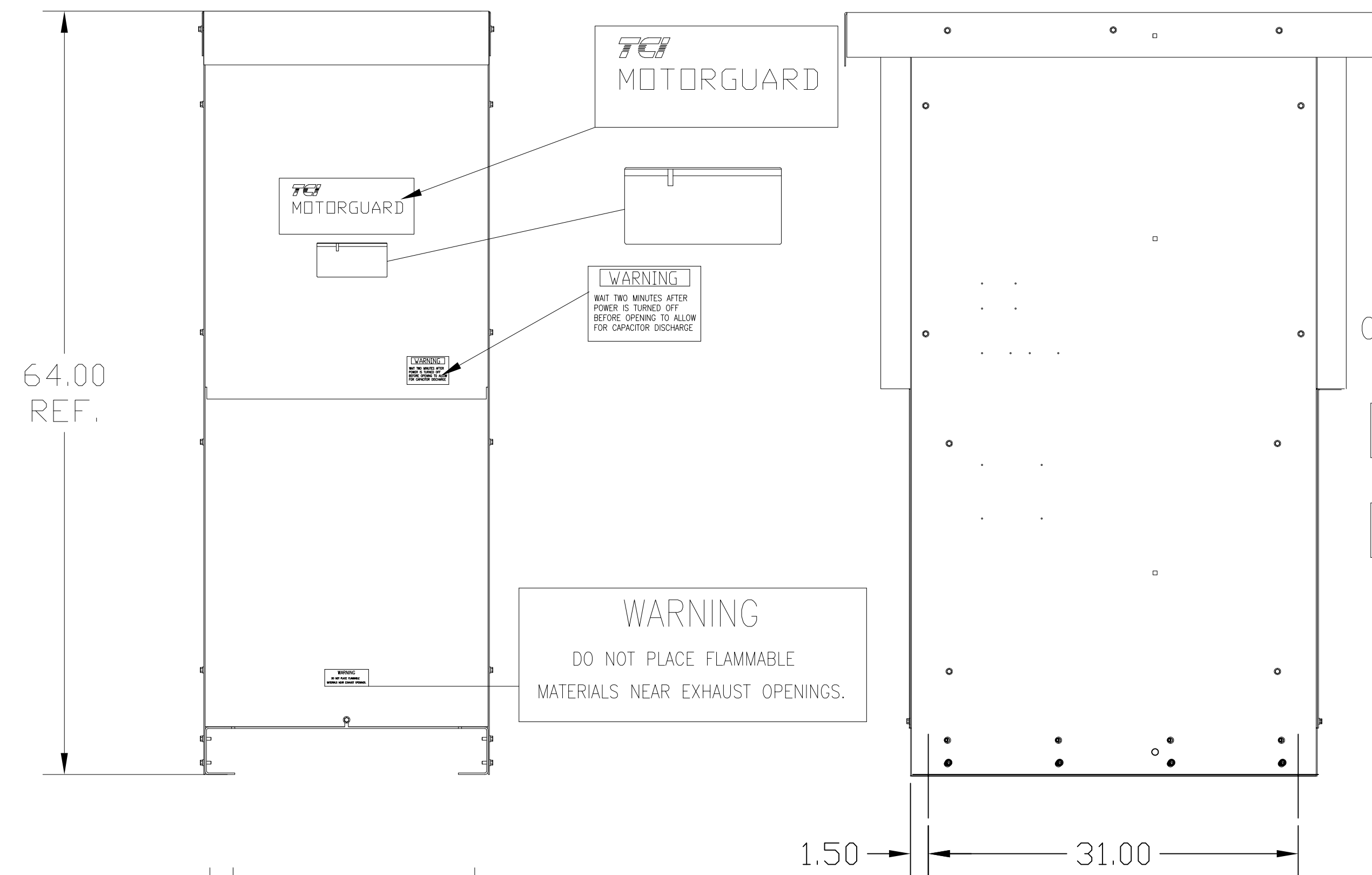
SYSTEM VOLTAGE: 480V SCHEMATIC: 26736

HZ: 80

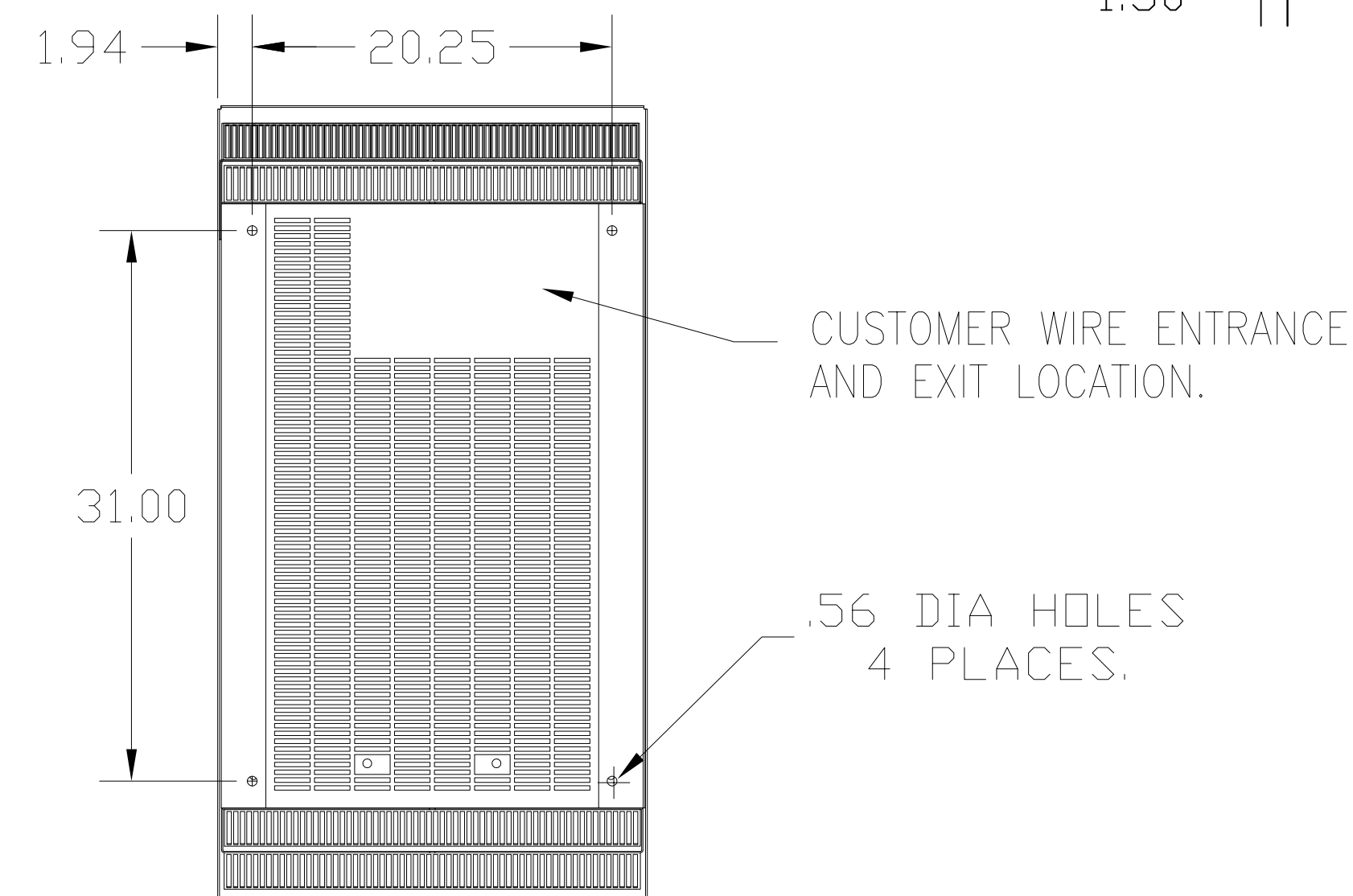
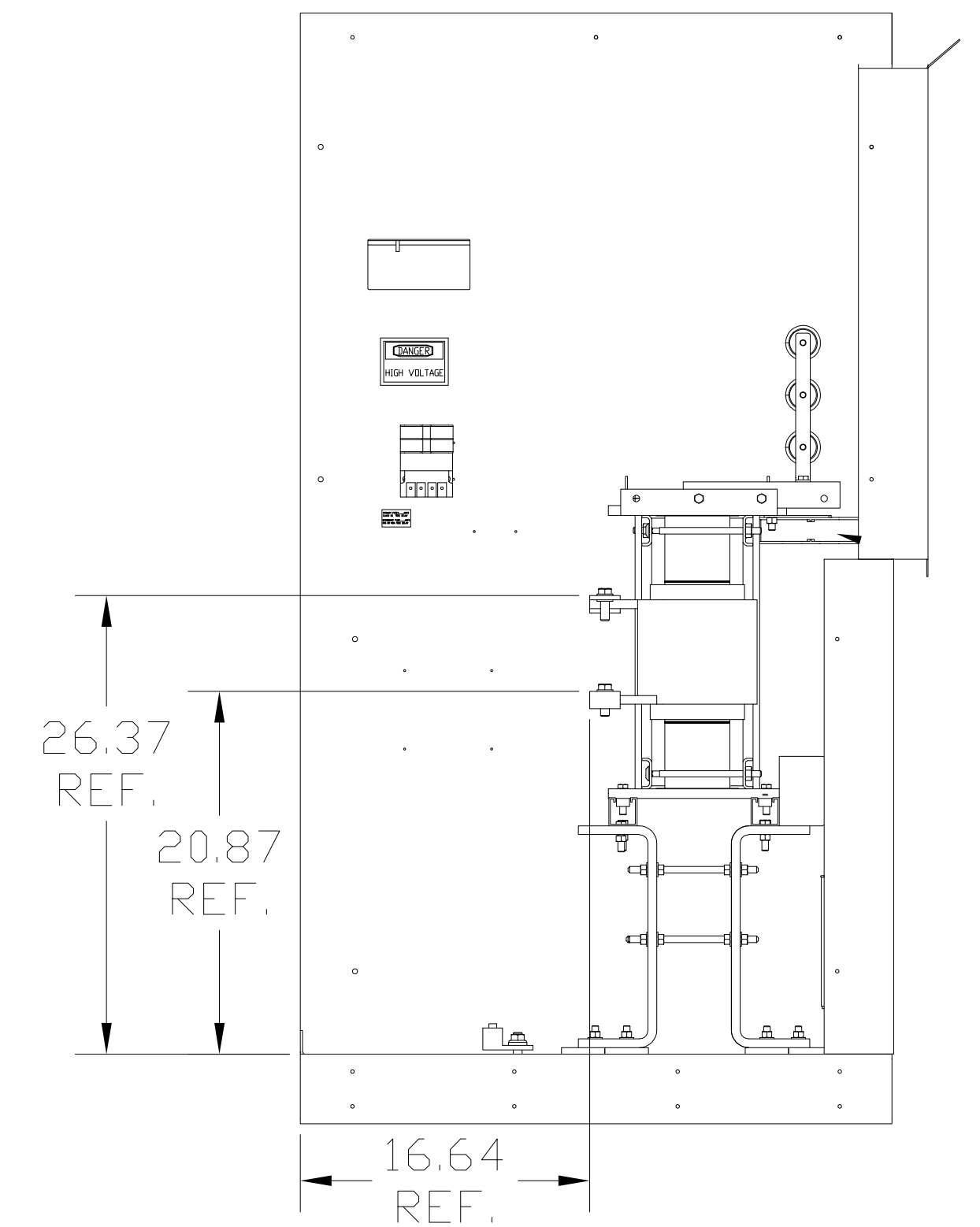
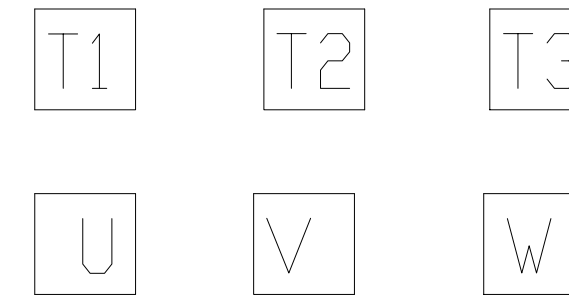
PHASE: 3 ENCLOSURE TYPE: 1/3R

MOTORGUARD

GROUND LUG
WIRE RANGE: ONE 600CM- #4 AWG
TWO 250MCM-1/0
TORQUE: 500 LB-IN



CUSTOMER CONNECTIONS
(.56 DIA HOLES 6 PLACES.)



PART NUMBER: KMG305AG010000

FOR SCHEMATIC SEE DWG# 26736

CUSTOMER IS RESPONSIBLE FOR INSTALLATION TO MEET ALL NATIONAL AND LOCAL ELECTRICAL CODES.

		TOLERANCES (EXCEPT AS NOTED)		TCI® w132 N10611 Grant Drive Germantown, WI 53022	
		DECIMAL		KMG, LRC FILTER, STANDARD	
		.XX ±.50		305AMP, 480/3/80, 1/3R	
		.XXX±.25		DRN BY DSW DATE 10/08/08 DWG NO. 103890DG	
		FRACTIONAL ± 1/32		SCALE TO FIT	
2898 TOP F&B CHG		2/6/13 DSW		APRVD. D	
NO REVISION		DATE BY		SHT. 1 of 1	