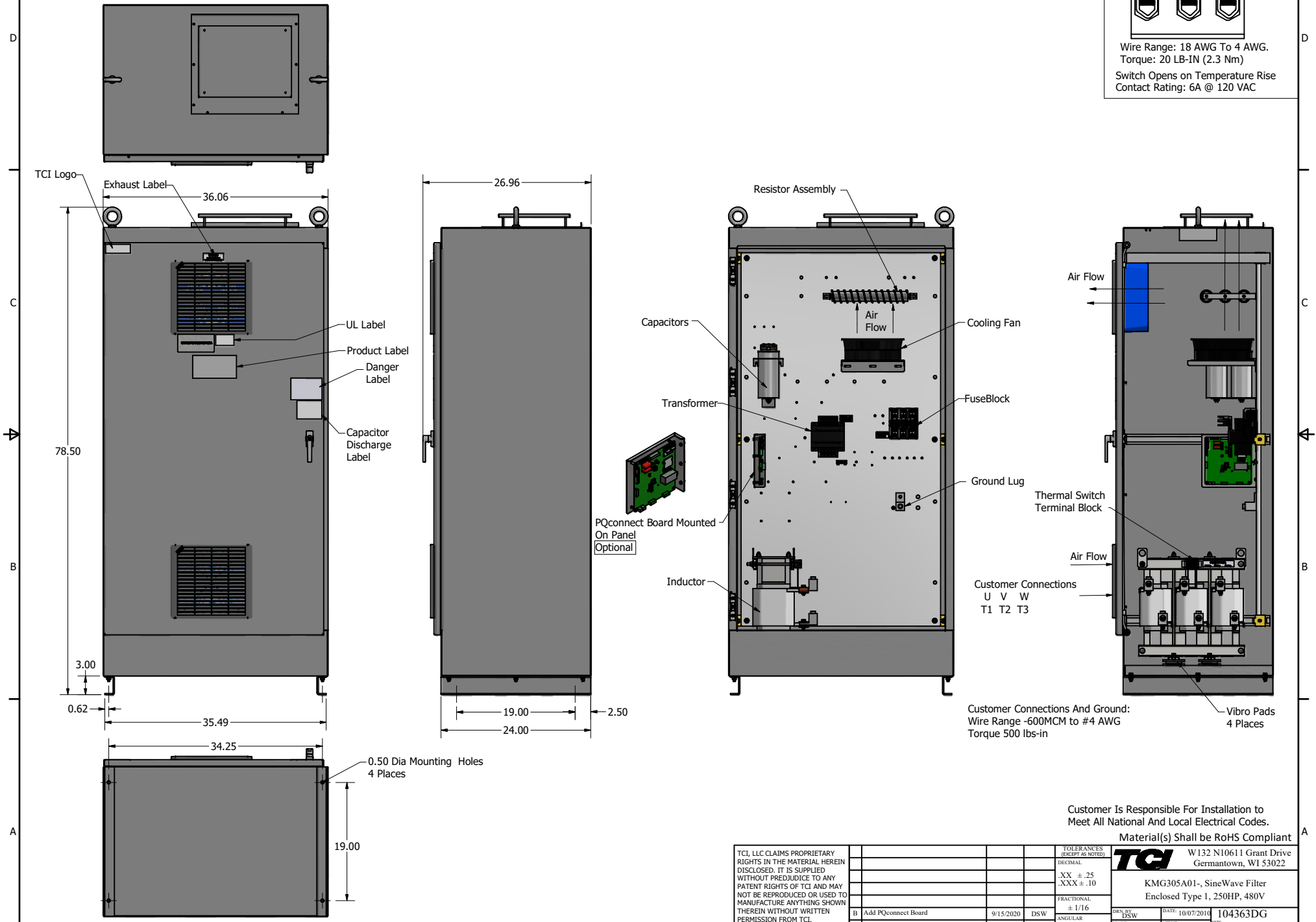
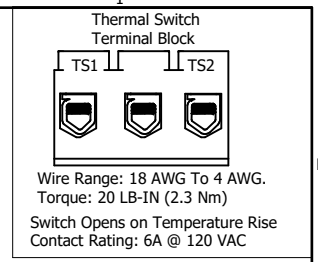


SineWave Part Number	Schematic Drawing#	Approx Weight (LBS)
KMG305A01A	24281-3A	789
KMG305A01P	24281-3P	794

HorsePower (HP)	kVar	Max Amps	Voltage (V)	HZ	Phase
250	20	305	480	60	3



Customer Connections And Ground:  
Wire Range -600MCM to #4 AWG  
Torque 500 lbs-in

Customer Is Responsible For Installation to Meet All National And Local Electrical Codes.

Material(s) Shall be RoHS Compliant

TCI, LLC CLAIMS PROPRIETARY RIGHTS IN THE MATERIAL HEREIN DISCLOSED. IT IS SUPPLIED WITHOUT PREJUDICE TO ANY PATENT RIGHTS OF TCI AND MAY NOT BE REPRODUCED OR USED TO MANUFACTURE ANYTHING SHOWN THEREIN WITHOUT WRITTEN PERMISSION FROM TCI.					TOLERANCES (EXCEPT AS NOTED) DECIMAL .XX ± .25 .XXX ± .10	<b>TCI</b> W132 N10611 Grant Drive Germantown, WI 53022  KMG305A01-, SineWave Filter Enclosed Type 1, 250HP, 480V 104363DG	
	B	Add PQconnect Board	9/15/2020	DSW	FRACTIONAL ± 1/16		DESIGNED BY: DSW DATE: 10/07/2014 SCALE: 1/5.5 DRAWN BY: [blank] CHECKED BY: [blank]
	NO	REVISION	DATE	BY	ANGULAR ± 1°		104363DG SHEET 1 OF 1