

KMG28C00A

APPROX WEIGHT: 89LBS

KMG HIGH PERFORMANCE OUTPUT FILTER

PART NUMBER: KMG28C00A

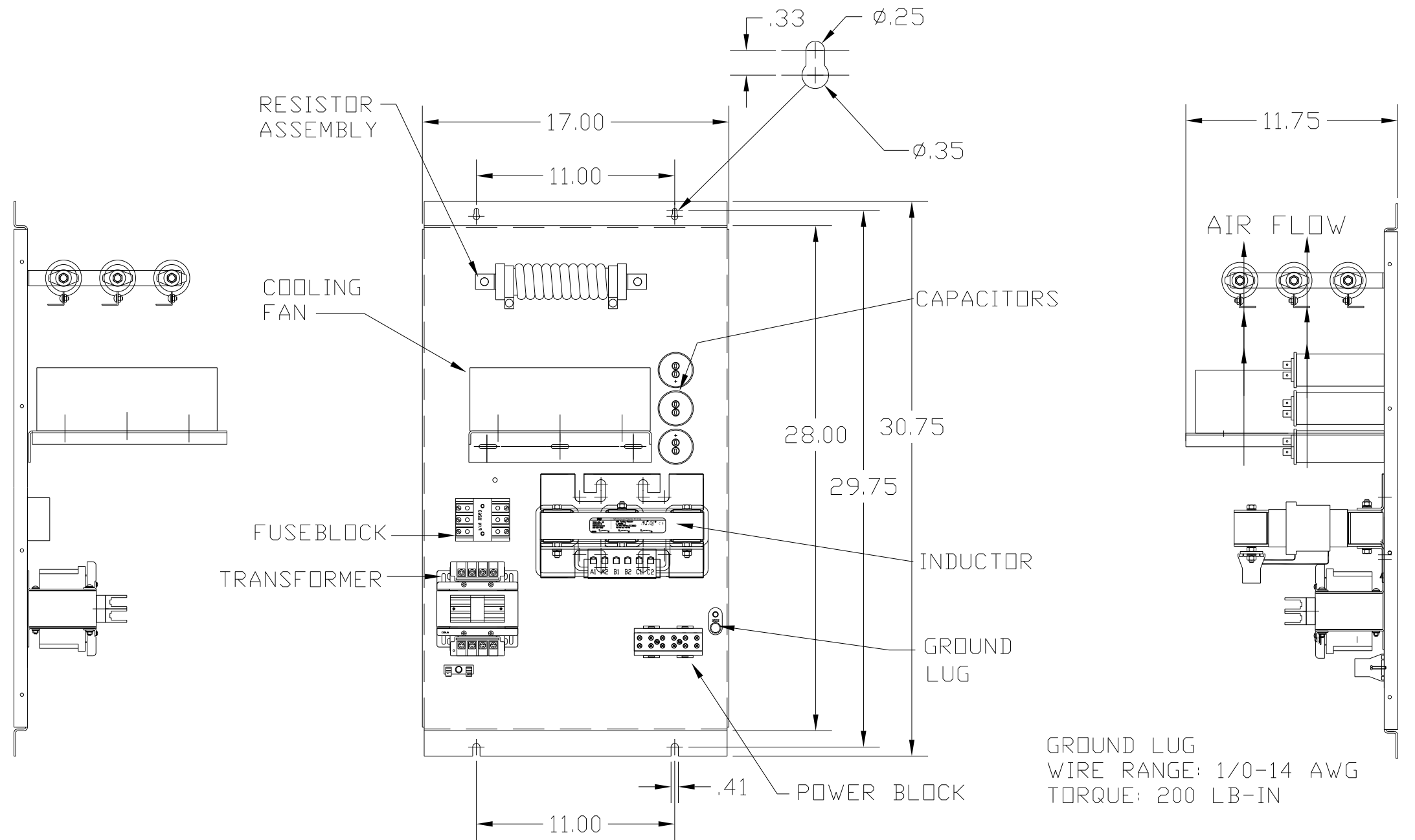
FLA: 28 DRAWING#: 104418DG

SYSTEM VOLTAGE: 600 SCHEMATIC: 24281-11A

HZ: 80

PHASE: 3

MOTORGUARD



GROUND LUG
WIRE RANGE: 1/0-14 AWG
TORQUE: 200 LB-IN

CUSTOMER CONNECTIONS

WIRE RANGE: 1 AWG THRU 4 AWG 35 LB-IN
6 AWG THRU 14 AWG 30 LB-IN
16 AWG THRU 22 AWG 25 LB-IN

FOR SCHEMATIC SEE DRAWING P/N 24281-11A

CUSTOMER IS RESPONSIBLE FOR PROPER COOLING OF COMPONENTS IN CUSTOMERS ASSEMBLY.

CUSTOMER IS RESPONSIBLE FOR PROPER INSTALLATION OF ASSEMBLY IN ACCORDANCE WITH LOCAL AND NATIONAL CODES.

				TOLERANCES (EXCEPT AS NOTED)	 7878 N. 86th STREET MILWAUKEE, WI 53224	
				DECIMAL		
				.XX ± .02		
				.XXX ± .01		
				FRACTIONAL ± 1/32	Standard, SineWave Filter Open, 25HP, 28AMP, 600V	
				ANGULAR ± 1/2°		
NO	REVISION	DATE	BY			
				DRN. BY DSW	DATE 10/12/2010	DWG. NO. 104418DG
				SCALE TO FIT	APRVD.	B
				SHT. 1 OF 1		