

# KMG25C00A

APPROX WEIGHT: 84LBS

KMG HIGH PERFORMANCE OUTPUT FILTER

PART NUMBER: KMG25C00A

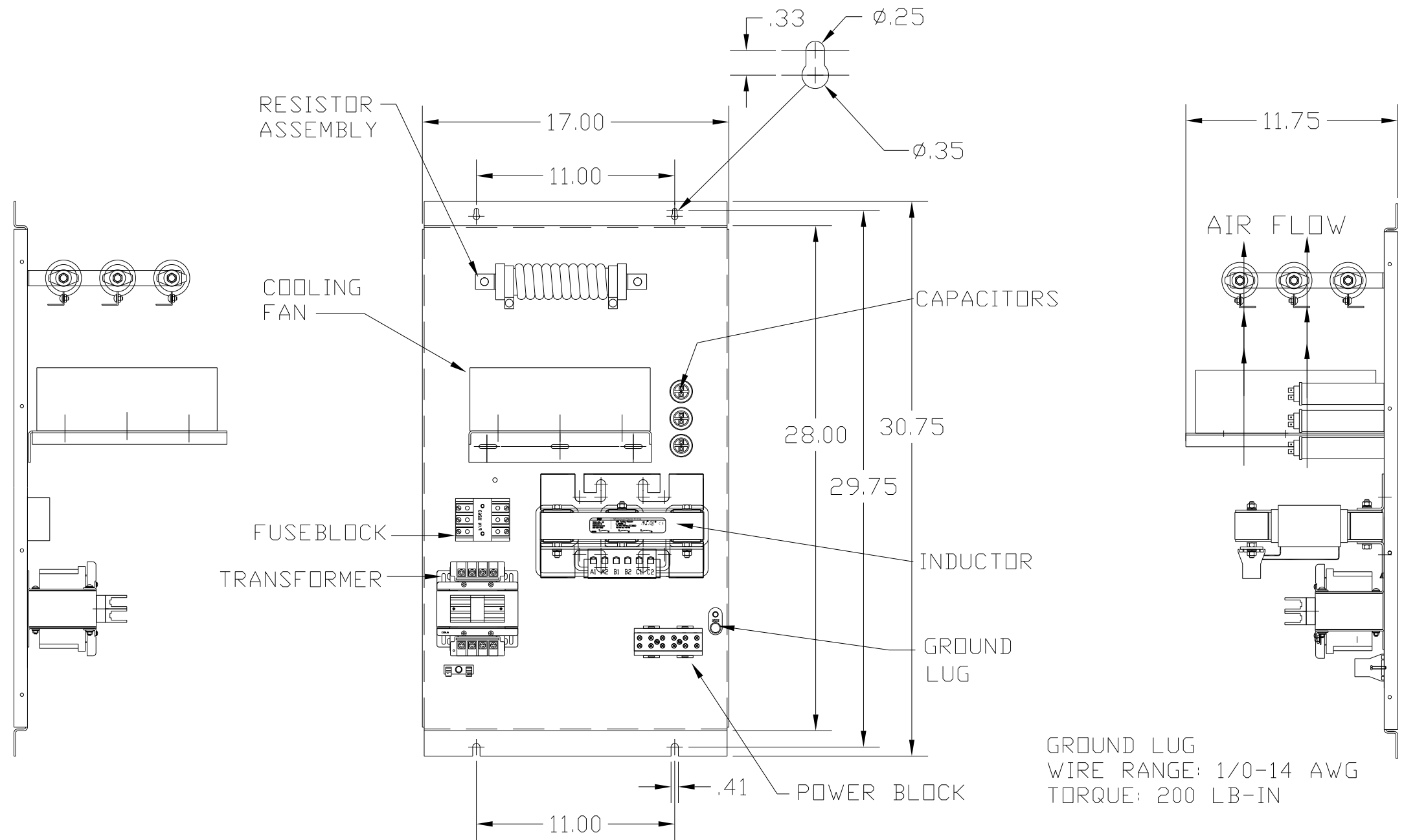
FLA: 25                      DRAWING#: 104417DG

SYSTEM VOLTAGE: 600        SCHEMATIC: 24281-11A

HZ: 80

PHASE: 3

MOTORGUARD



### CUSTOMER CONNECTIONS

WIRE RANGE: 1 AWG THRU 4 AWG 35 LB-IN  
 6 AWG THRU 14 AWG 30 LB-IN  
 16 AWG THRU 22 AWG 25 LB-IN

FOR SCHEMATIC SEE DRAWING P/N 24281-11A

CUSTOMER IS RESPONSIBLE FOR PROPER COOLING OF COMPONENTS IN CUSTOMERS ASSEMBLY.

CUSTOMER IS RESPONSIBLE FOR PROPER INSTALLATION OF ASSEMBLY IN ACCORDANCE WITH LOCAL AND NATIONAL CODES.

				TOLERANCES (EXCEPT AS NOTED)	7878 N. 86th STREET MILWAUKEE, WI 53224
				DECIMAL	
				.XX ± .02	Standard, SineWave Filter Open, 20HP, 25AMP, 600V
				.XXX ± .01	
				FRACTIONAL ± 1/32	DRN. BY DSW    DATE 10/12/2010    DWG. NO. 104417DG
				ANGULAR ± 1/2°	SCALE TO FIT    APRVD.    B
NO	REVISION	DATE	BY		SHT.1 OF1