

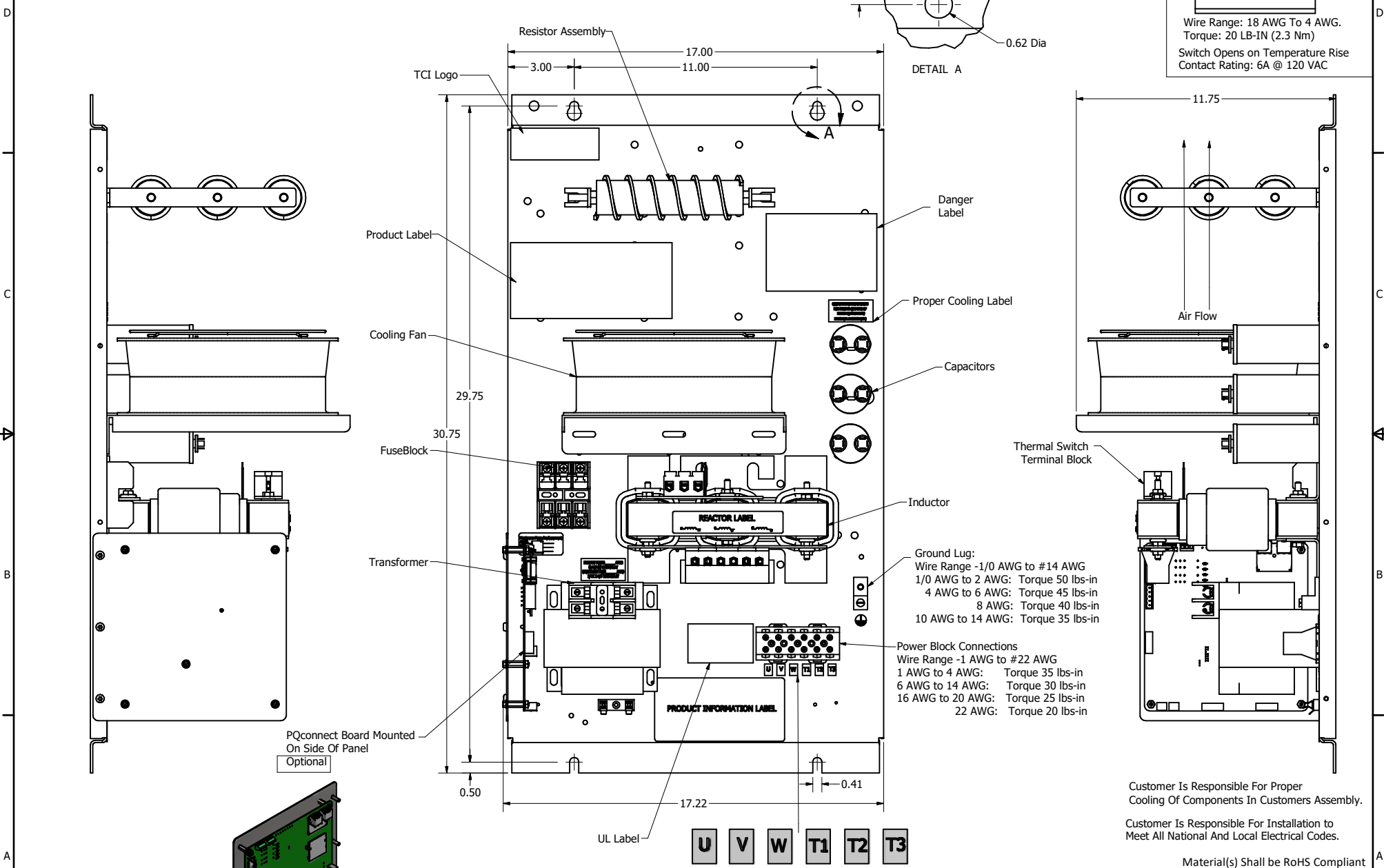
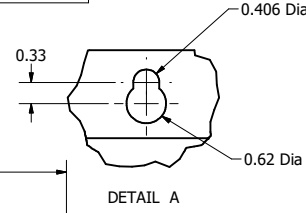
SineWave Part Number	Schematic Drawing#	Approx Weight (LBS)
KMG25C00A	24281-11A	84
KMG25C00P	24281-11P	85

HorsePower (HP)	kVar	Max Amps	Voltage (V)	HZ	Phase
20	1.17	25	600	60	3

1

Thermal Switch Terminal Block

Wire Range: 18 AWG To 4 AWG.
Torque: 20 LB-IN (2.3 Nm)
Switch Opens on Temperature Rise
Contact Rating: 6A @ 120 VAC



Customer Is Responsible For Proper Cooling Of Components In Customers Assembly.
Customer Is Responsible For Installation to Meet All National And Local Electrical Codes.

Material(s) Shall be RoHS Compliant

TCI, LLC CLAIMS PROPRIETARY RIGHTS IN THE MATERIAL HEREIN DISCLOSED. IT IS SUPPLIED WITHOUT PREJUDICE TO ANY PATENT RIGHTS OF TCI AND MAY NOT BE REPRODUCED OR USED TO MANUFACTURE ANYTHING SHOWN THEREIN WITHOUT WRITTEN PERMISSION FROM TCI.				TOLERANCES (EXCEPT AS NOTED) DECIMAL .XX ± .25 .XXX ± .10 FRACTIONAL ± 1/16 ANGULAR ± 1°		W132 N10611 Grant Drive Germantown, WI 53022 KMG25C000 - SineWave Filter Open Panel, 20HP, 600V DWN BY: DSW DATE: 10/04/2014 104417DG SCALE: 1/8 REVISED BY: CSE SHEET 1 OF 1	
B	Add PQconnect Board	9/23/2020	DSW				
NO	REVISION	DATE	BY				

