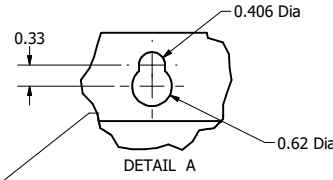


SineWave Part Number	Schematic Drawing#	Approx Weight (LBS)
KMG23A01A	24281-1A	124

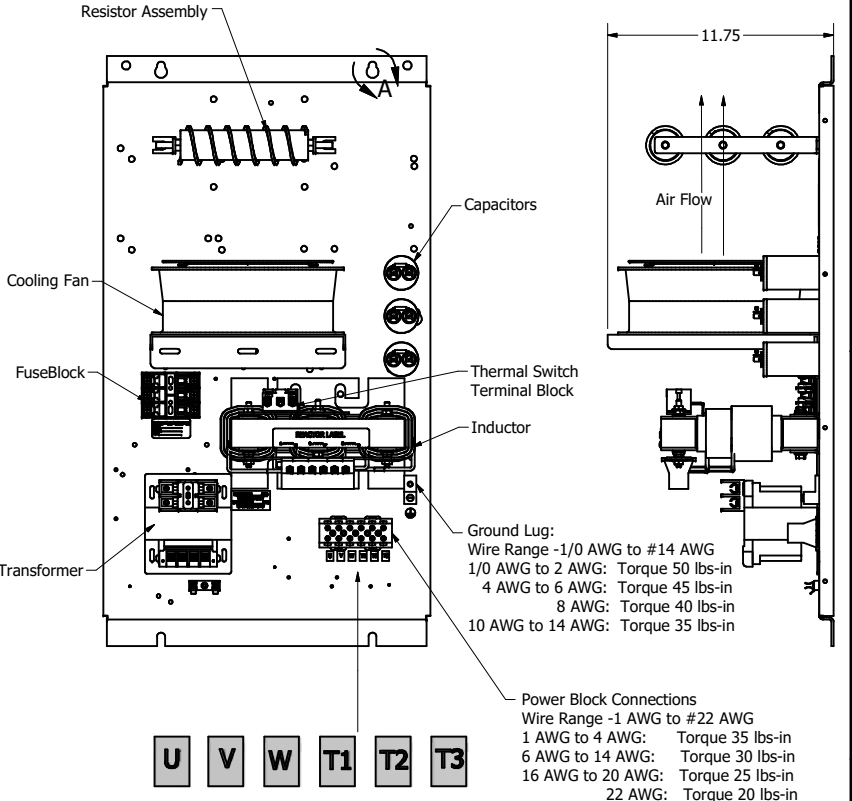
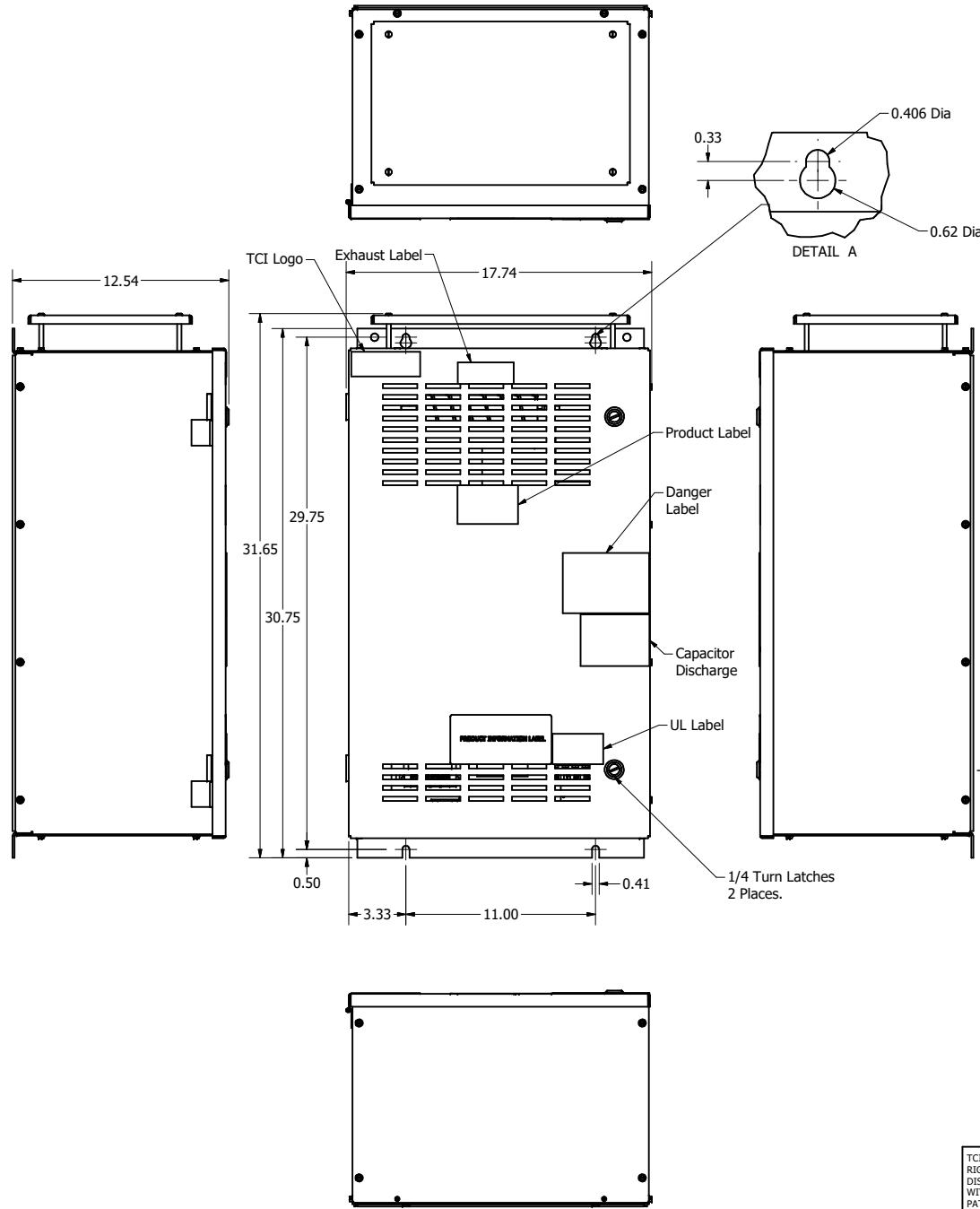
HorsePower (HP)	kVar	Max Amps	Voltage (V)	HZ	Phase
15	1.7	23	480	60	3

**Thermal Switch Terminal Block**

Wire Range: 18 AWG To 4 AWG.  
Torque: 20 LB-IN (2.3 Nm)  
Switch Opens on Temperature Rise  
Contact Rating: 6A @ 120 VAC



D  
C  
B  
A



Customer Is Responsible For Installation to Meet All National And Local Electrical Codes.

Material(s) Shall be RoHS Compliant

TCI, LLC CLAIMS PROPRIETARY RIGHTS IN THE MATERIAL HEREIN DISCLOSED. IT IS SUPPLIED WITHOUT PREJUDICE TO ANY PATENT RIGHTS OF TCI AND MAY NOT BE REPRODUCED OR USED TO MANUFACTURE ANYTHING SHOWN THEREIN WITHOUT WRITTEN PERMISSION FROM TCI.					TOLERANCES (EXCEPT AS NOTED)	<b>TCI</b> W132 N10611 Grant Drive Germantown, WI 53022  SineWave Filter Enclosed Type 1, 15HP, 480V 104351DG
					DECIMAL	
					.XX ± .25 .XXX ± .10	
					FRACTIONAL	
					± 1/16	DESIGNED BY: DSW DATE: 10/07/2010 DRAWN BY: DSW DATE: 10/07/2010 CHECKED BY: DSW DATE: 10/07/2010 SCALE: 1/8 SHEET: 1 OF 1
					ANGULAR	
					± 1°	