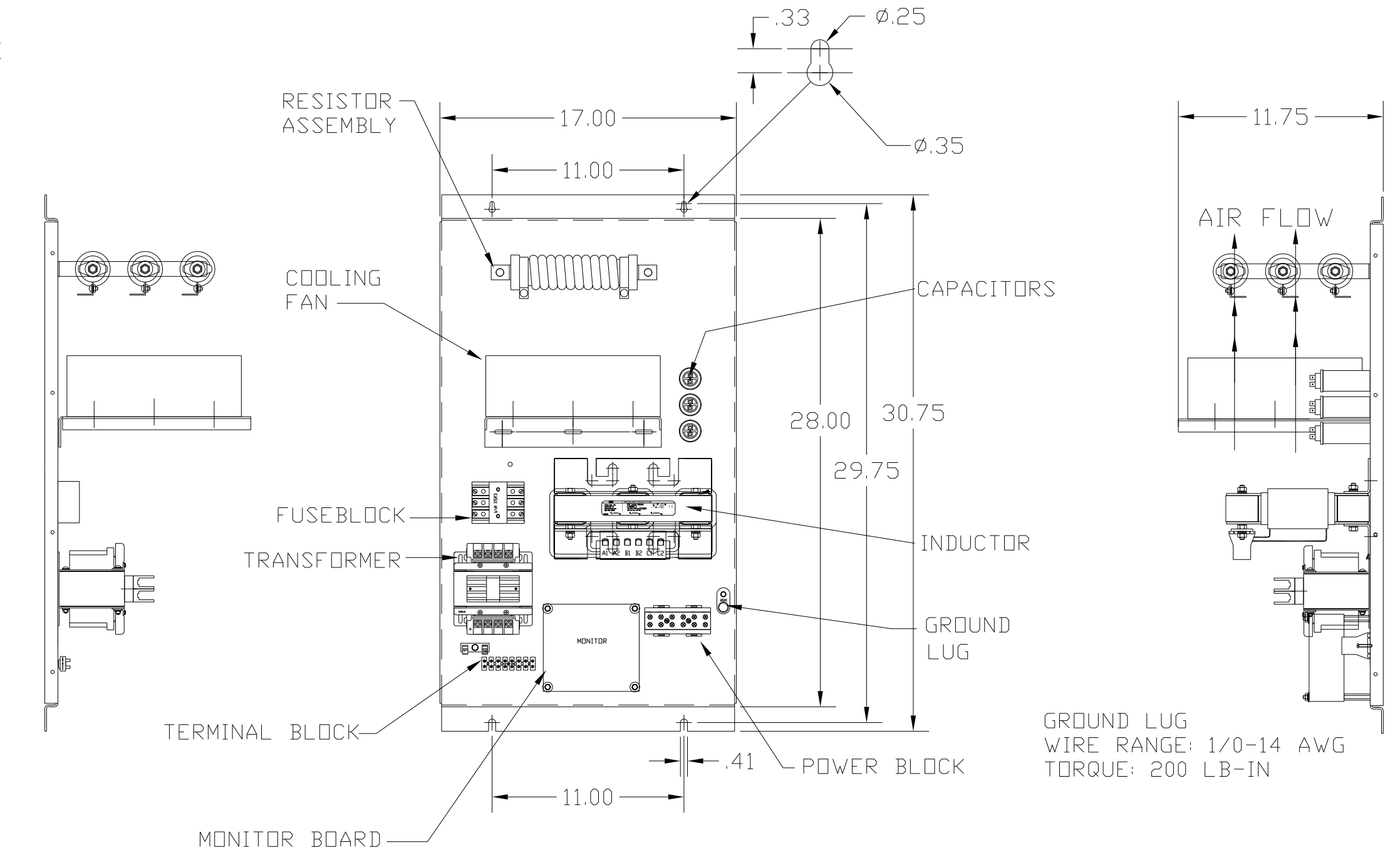


# KMG20C00A

APPROX WEIGHT: 74LBS

KMG HIGH PERFORMANCE OUTPUT FILTER	
PART NUMBER: KMG20C00A	
FLA: 20	DRAWING#: 104416DG
SYSTEM VOLTAGE: 600	SCHEMATIC: 24281-11A
HZ: 80	
PHASE: 3	
MOTORGUARD	



LINE CONNECTIONS  
 WIRE RANGE: 1 AWG THRU 4 AWG 35 LB-IN  
 6 AWG THRU 14 AWG 30 LB-IN  
 16 AWG THRU 22 AWG 25 LB-IN

FOR SCHEMATIC SEE DRAWING P/N 24281-11A

CUSTOMER IS RESPONSIBLE FOR PROPER COOLING OF COMPONENTS IN CUSTOMERS ASSEMBLY.

CUSTOMER IS RESPONSIBLE FOR PROPER INSTALLATION OF ASSEMBLY IN ACCORDANCE WITH LOCAL AND NATIONAL CODES.

NO	REVISION	DATE	BY

TOLERANCES (EXCEPT AS NOTED)		<b>TCL</b> 7878 N. 86th STREET MILWAUKEE, WI 53224
DECIMAL		
.XX ± .02		Standard, SineWave Filter Open, 15HP, 20AMP, 600V
.XXX ± .01		
FRACTIONAL ± 1/32		DRN. BY DSW
ANGULAR ± 1/2°		DATE 10/12/2010
		DWG. NO. 104416DG
		SCALE TO FIT
		APRVD. <b>B</b>
		SHT. 1 OF 1