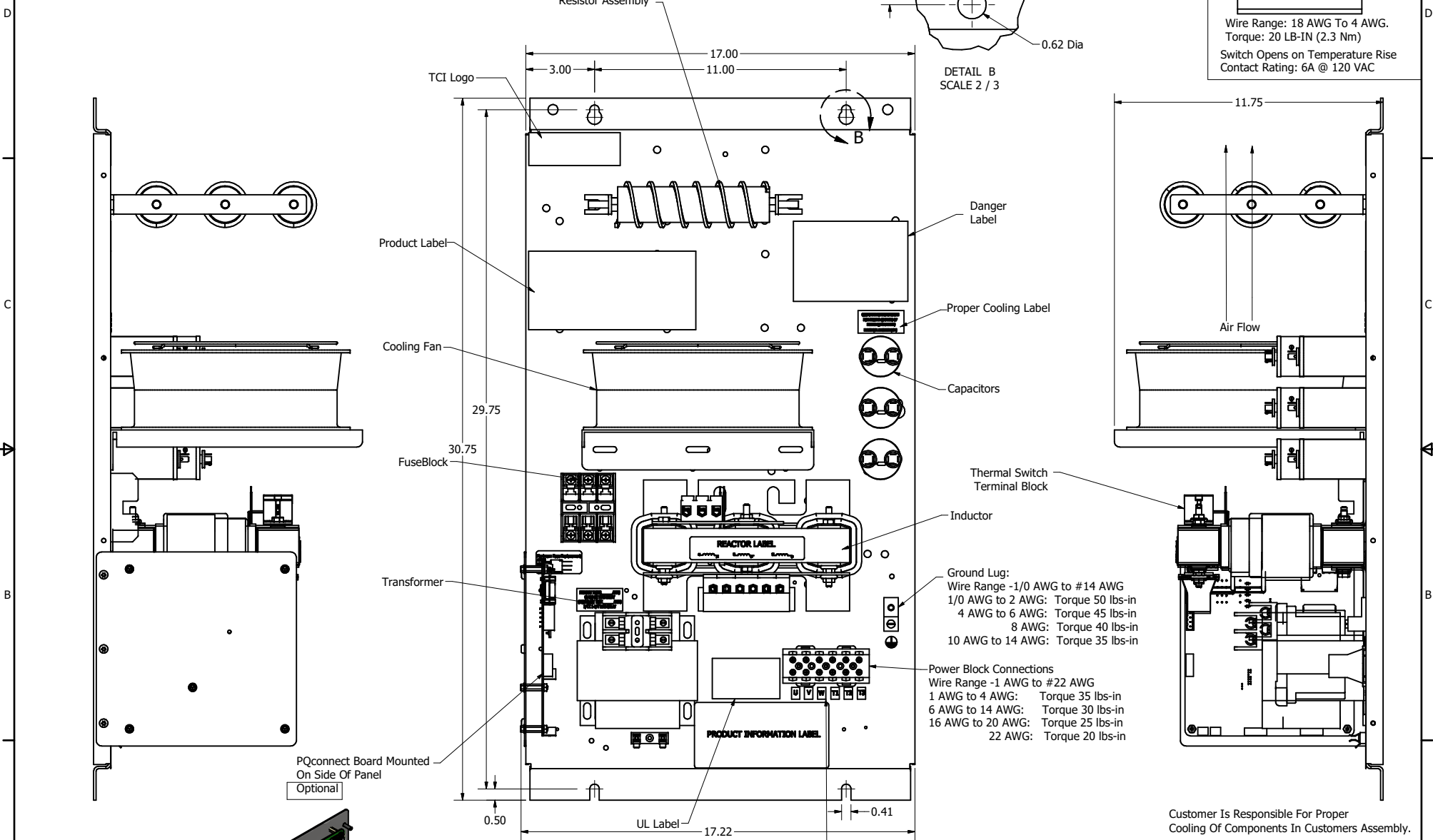
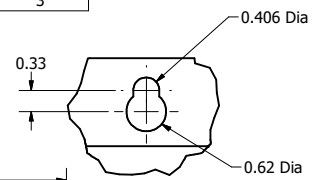
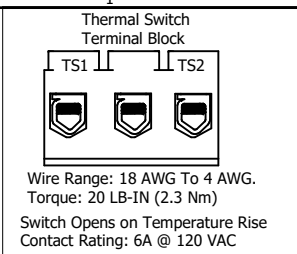
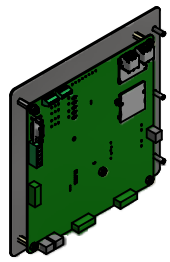


SineWave Part Number	Schematic Drawing#	Approx Weight (LBS)
KMG20C00A	24281-11A	74
KMG20C00P	24281-11P	75

HorsePower (HP)	kVar	Max Amps	Voltage (V)	HZ	Phase
15	1.17	20	600	60	3



PQconnect Board Mounted On Side Of Panel
Optional



- Ground Lug:
Wire Range -1/0 AWG to #14 AWG
1/0 AWG to 2 AWG: Torque 50 lbs-in
4 AWG to 6 AWG: Torque 45 lbs-in
8 AWG: Torque 40 lbs-in
10 AWG to 14 AWG: Torque 35 lbs-in
- Power Block Connections
Wire Range -1 AWG to #22 AWG
1 AWG to 4 AWG: Torque 35 lbs-in
6 AWG to 14 AWG: Torque 30 lbs-in
16 AWG to 20 AWG: Torque 25 lbs-in
22 AWG: Torque 20 lbs-in

U V W T1 T2 T3

TCI, LLC CLAIMS PROPRIETARY RIGHTS IN THE MATERIAL HEREIN DISCLOSED. IT IS SUPPLIED WITHOUT PREJUDICE TO ANY PATENT RIGHTS OF TCI AND MAY NOT BE REPRODUCED OR USED TO MANUFACTURE ANYTHING SHOWN THEREIN WITHOUT WRITTEN PERMISSION FROM TCI.				TOLERANCES (EXCEPT AS NOTED) DECIMAL .XX ±.25 .XXX ±.10 FRACTIONAL ± 1/16 ANGULAR ± 1°		W132 N10611 Grant Drive Germantown, WI 53022 KMG20C000 , SineWave Filter Open Panel, 15HP, 480V DWN BY: DSW DATE: 10/04/2016 FILE: 104416DG SCALE: 1/8 DRAWN: DATE: FILE:	
B	PQconnect Added	9/23/2020	DSW				
NO	REVISION	DATE	BY				

Material(s) Shall be RoHS Compliant

Customer Is Responsible For Proper Cooling Of Components In Customers Assembly.
Customer Is Responsible For Installation to Meet All National And Local Electrical Codes.

D
C
B
A

D
C
B
A