

KMG200C00A
 APPROX WEIGHT: 449LBS

KMG HIGH PERFORMANCE OUTPUT FILTER

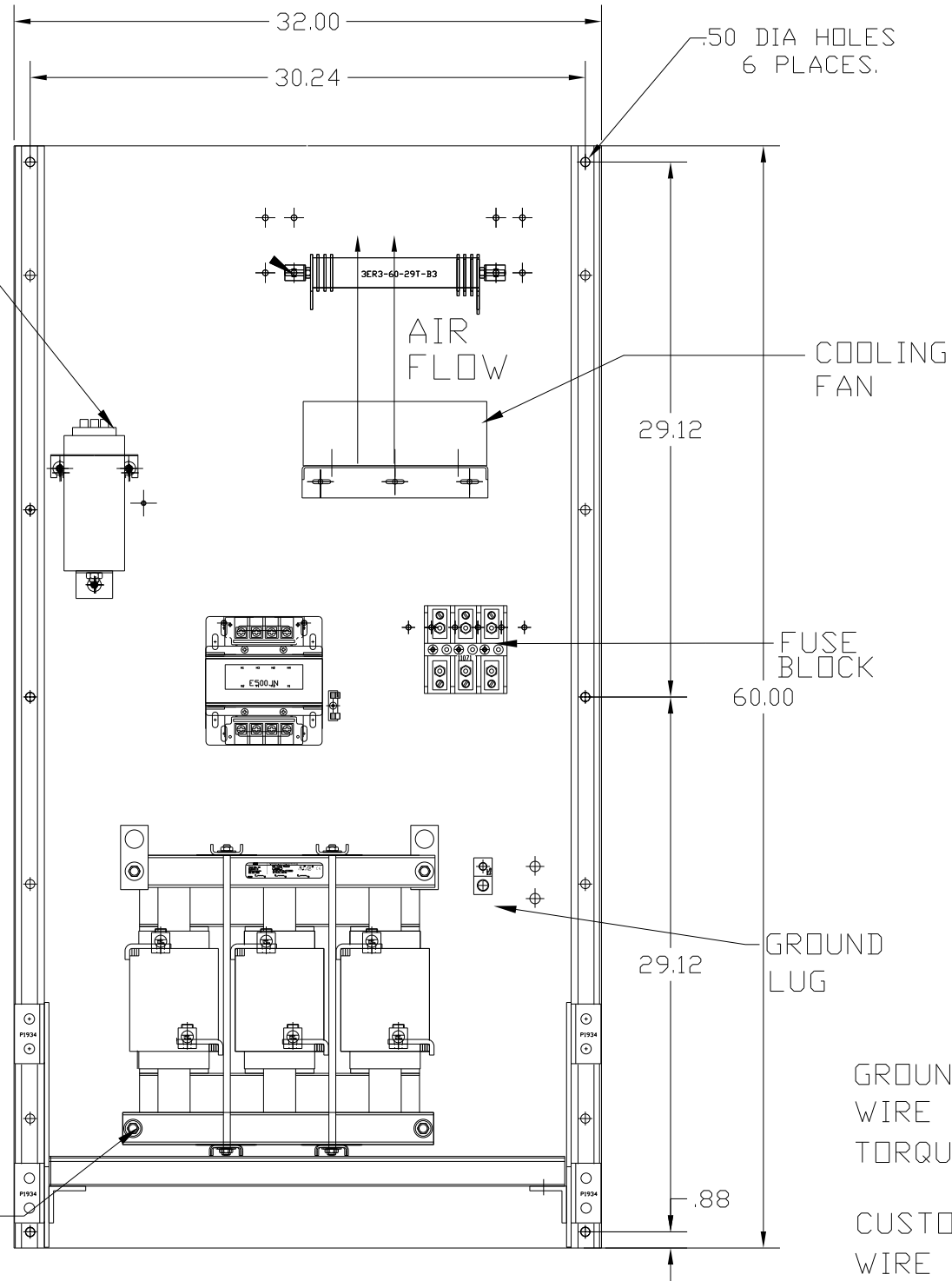
PART NUMBER: KMG200C00A
 FLA: 200
 SYSTEM VOLTAGE: 600
 HZ: 80
 PHASE: 3

DRAWING#: 104427DG
 SCHEMATIC: 24281-23A

MOTORGUARD

CAPACITORS

INDUCTOR

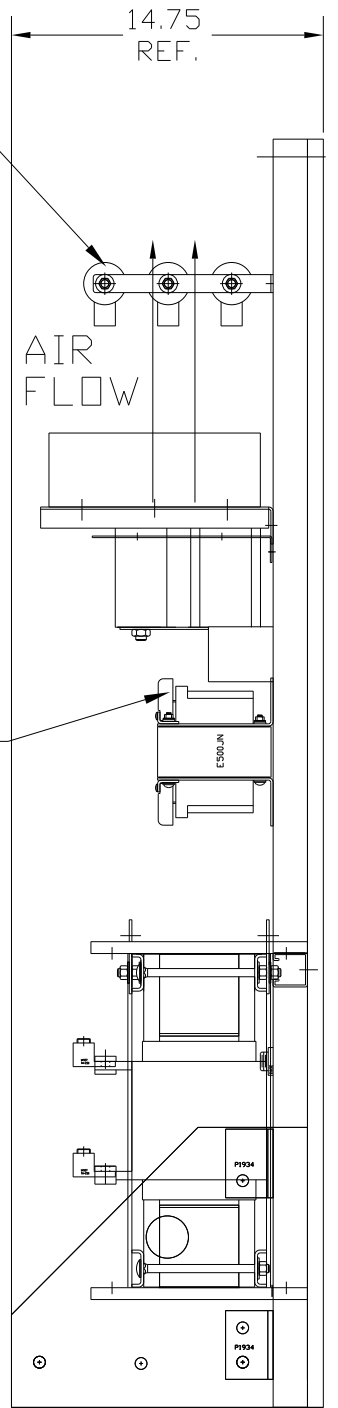


RESISTOR ASSEMBLY

TRANSFORMER

CUST. INPUT

CUST. OUTPUT



GROUND LUG
 WIRE RANGE: (1)250MCM-#6 AWG
 TORQUE: 275 LB-IN

CUSTOMER CONNECTIONS
 WIRE RANGE: (1)250MCM-#6 AWG
 TORQUE: 275 LB-IN

FOR SCHEMATIC SEE DRAWING P/N 24281-23A

CUSTOMER IS RESPONSIBLE FOR PROPER COOLING OF COMPONENTS IN CUSTOMERS ASSEMBLY

CUSTOMER IS RESPONSIBLE FOR PROPER INSTALLATION OF ASSEMBLY IN ACCORDANCE WITH LOCAL AND NATIONAL CODES.

NO	REVISION	DATE	BY

TOLERANCES
 (EXCEPT AS NOTED)
 DECIMAL
 .XX ± .02
 .XXX ± .01
 FRACTIONAL
 ± 1/32
 ANGULAR
 ± 1/2°



7878 N. 86th STREET
 MILWAUKEE, WI 53224

Standard, SineWave Filter
 Open, 200HP, 200AMP, 600V

DRN. BY DSW DATE 10/12/2010 DWG. NO. 104427DG
 SCALE TO FIT APRVD. B SH. 1 OF 1