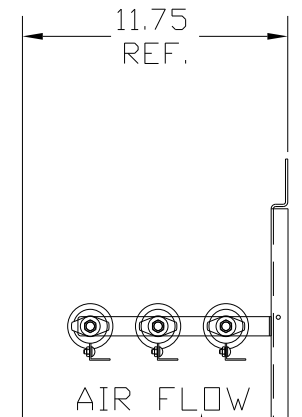
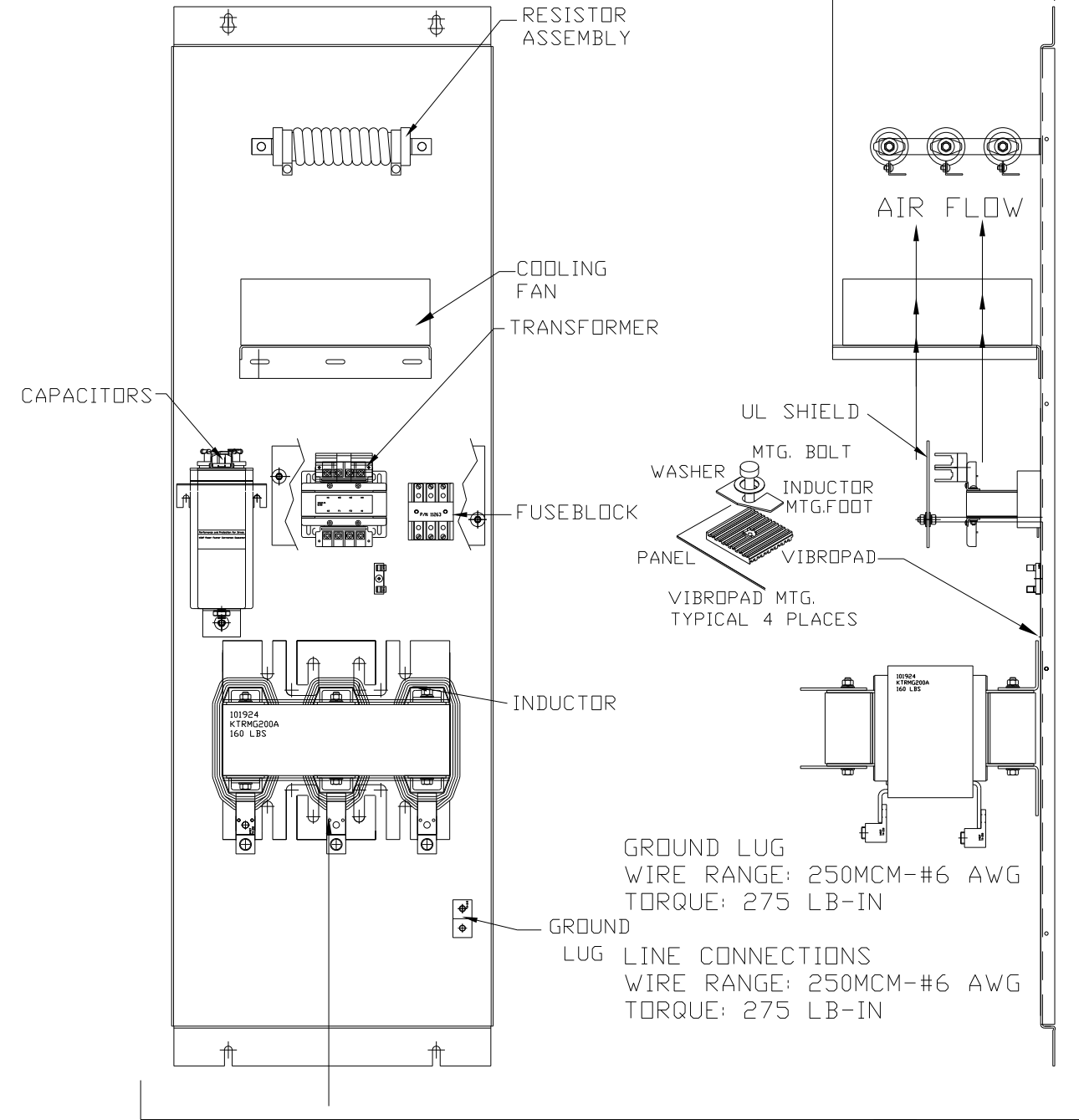
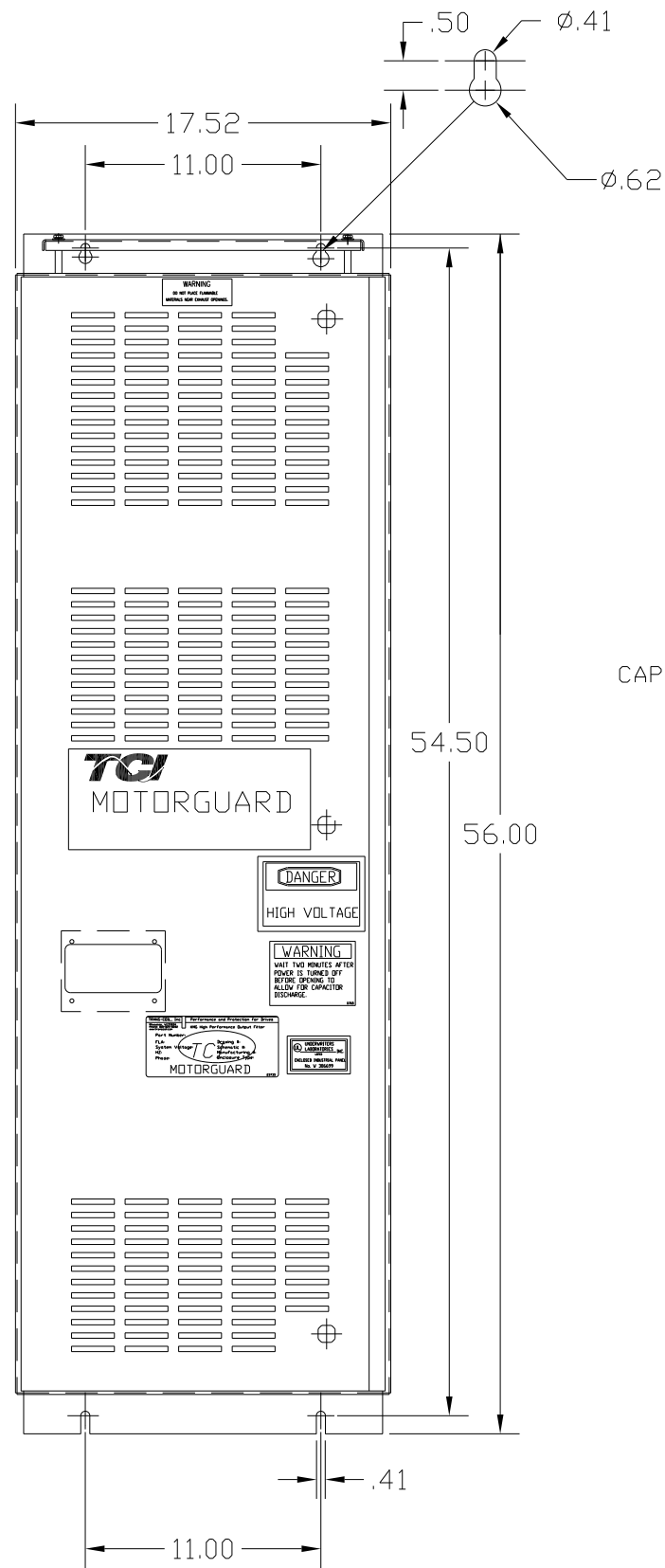
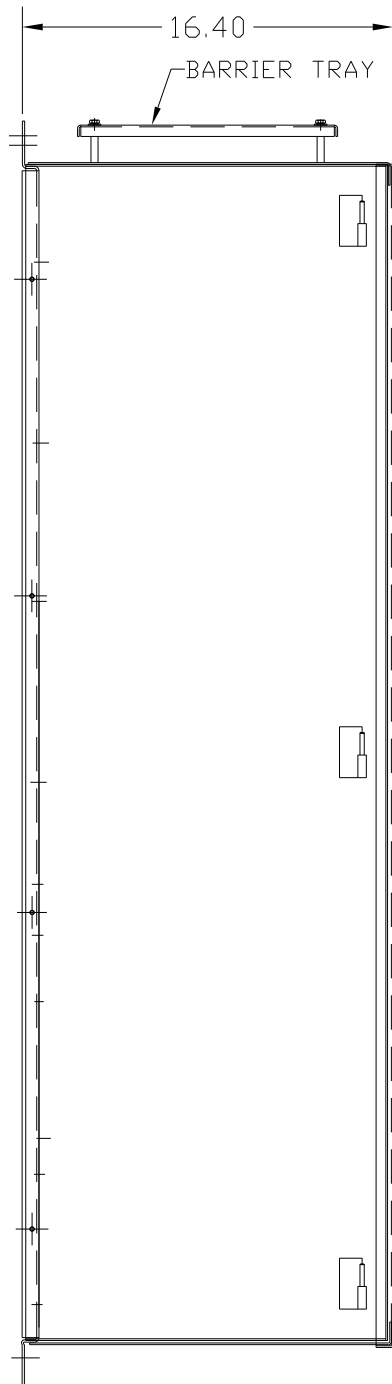


# KMG200A01A

APPROX WEIGHT: 344LBS

FOR SCHEMATIC SEE DRAWING P/N 24281-3A



KMG HIGH PERFORMANCE OUTPUT FILTER

PART NUMBER: KMG200A01A

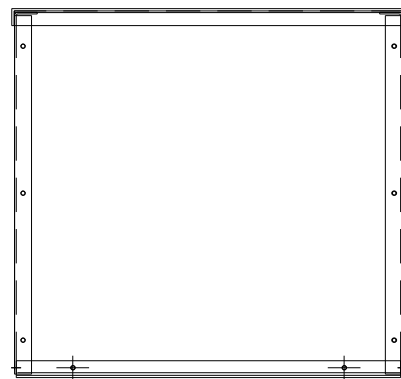
FLA: 200                      DRAWING#: 104361DG

SYSTEM VOLTAGE: 480        SCHEMATIC: 24281-3A

HZ: 80

PHASE: 3

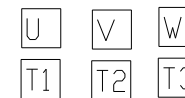
**MOTORGUARD**



SUGGESTED LOCATION FOR CUSTOMER INPUT/OUTPUT

ENCLOSURE NOT SHOWN

CUSTOMER CONNECTIONS



CUSTOMER IS RESPONSIBLE FOR PROPER INSTALLATION OF ASSEMBLY IN ACCORDANCE WITH LOCAL AND NATIONAL CODES.

				TOLERANCES (EXCEPT AS NOTED)		7878 N. 86th STREET MILWAUKEE, WI 53224	
				DECIMAL		Standard SineWave Filter	
				.XX ± .02		ENCLOSED, 150HP, 200AMP, 480V	
				.XXX ± .01		DRN. BY DSW    DATE 10/07/2010    DWG. NO. 104361DG	
				FRACTIONAL		SCALE TO FIT    APRVD.    C	
				± 1/32		SHT. 1 OF 1	
				ANGULAR			
				± 1/2°			
NO	REVISION	DATE	BY				