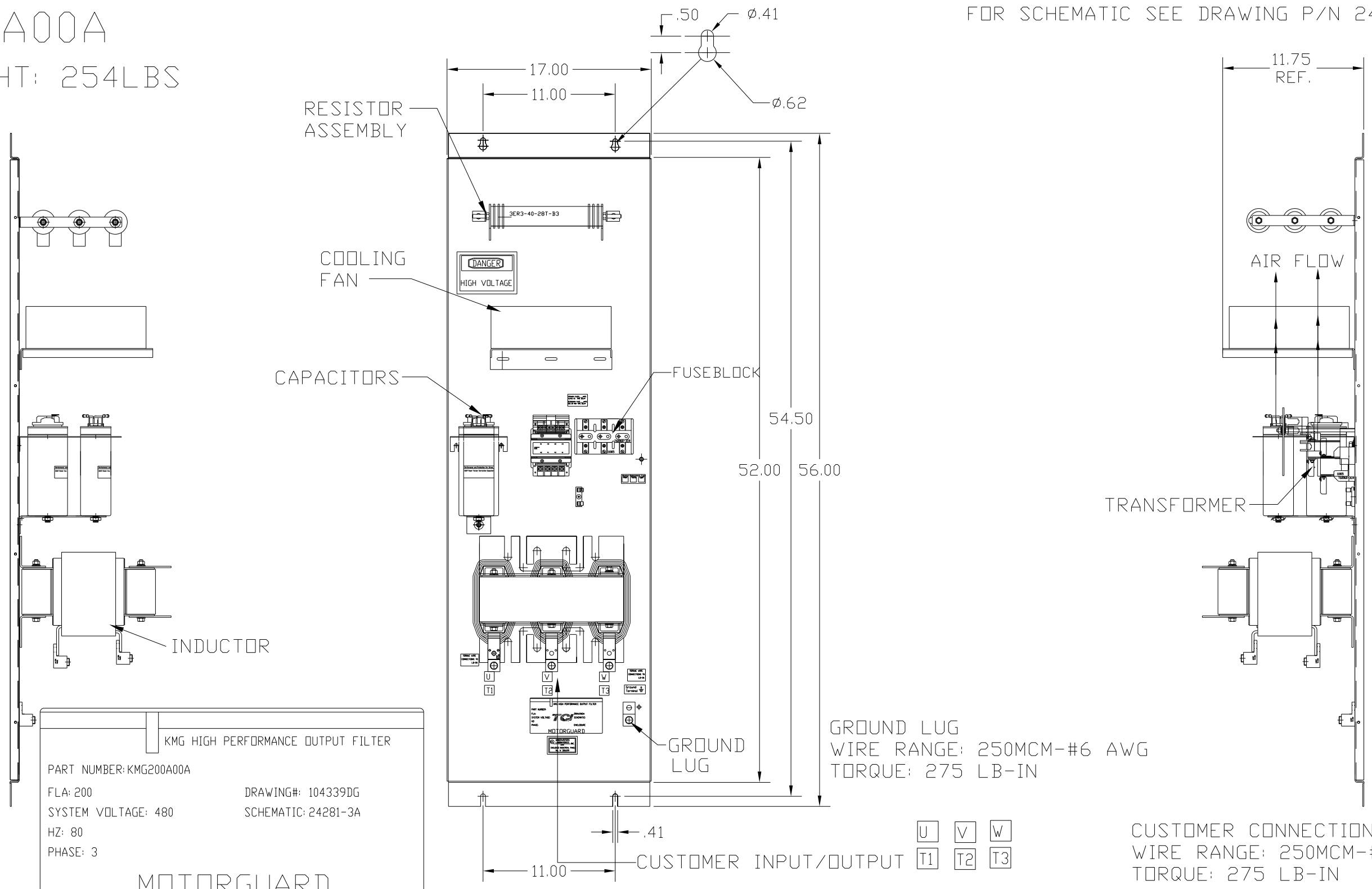


KMG200A00A

APPROX WEIGHT: 254LBS

FOR SCHEMATIC SEE DRAWING P/N 24281-3A



KMG HIGH PERFORMANCE OUTPUT FILTER

PART NUMBER: KMG200A00A

FLA: 200 DRAWING#: 104339DG

SYSTEM VOLTAGE: 480 SCHEMATIC: 24281-3A

HZ: 80

PHASE: 3

MOTORGUARD

CUSTOMER IS RESPONSIBLE FOR PROPER COOLING OF COMPONENTS IN CUSTOMERS ASSEMBLY.

CUSTOMER IS RESPONSIBLE FOR PROPER INSTALLATION OF ASSEMBLY IN ACCORDANCE WITH LOCAL AND NATIONAL CODES.

				TOLERANCES (EXCEPT AS NOTED)
				DECIMAL
				.XX ± .02
				.XXX ± .01
				FRACTIONAL
				± 1/32
				ANGULAR
				± 1/2°
NO	REVISION	DATE	BY	

TCL 7878 N. 86th STREET
MILWAUKEE, WI 53224

Standard, SineWave Filter
Open, 150HP, 200AMP, 480V

DRN. BY DSW DATE 10/04/2010 DWG. NO. 104339DG

SCALE TO FIT APRVD. B SHT. 1 OF 1