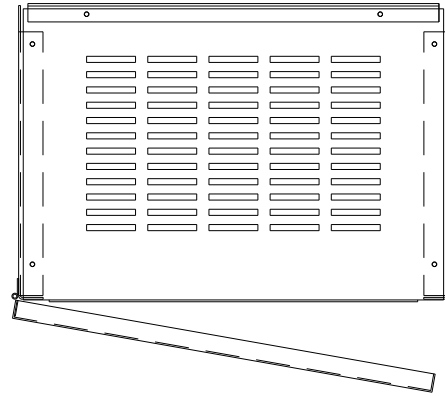
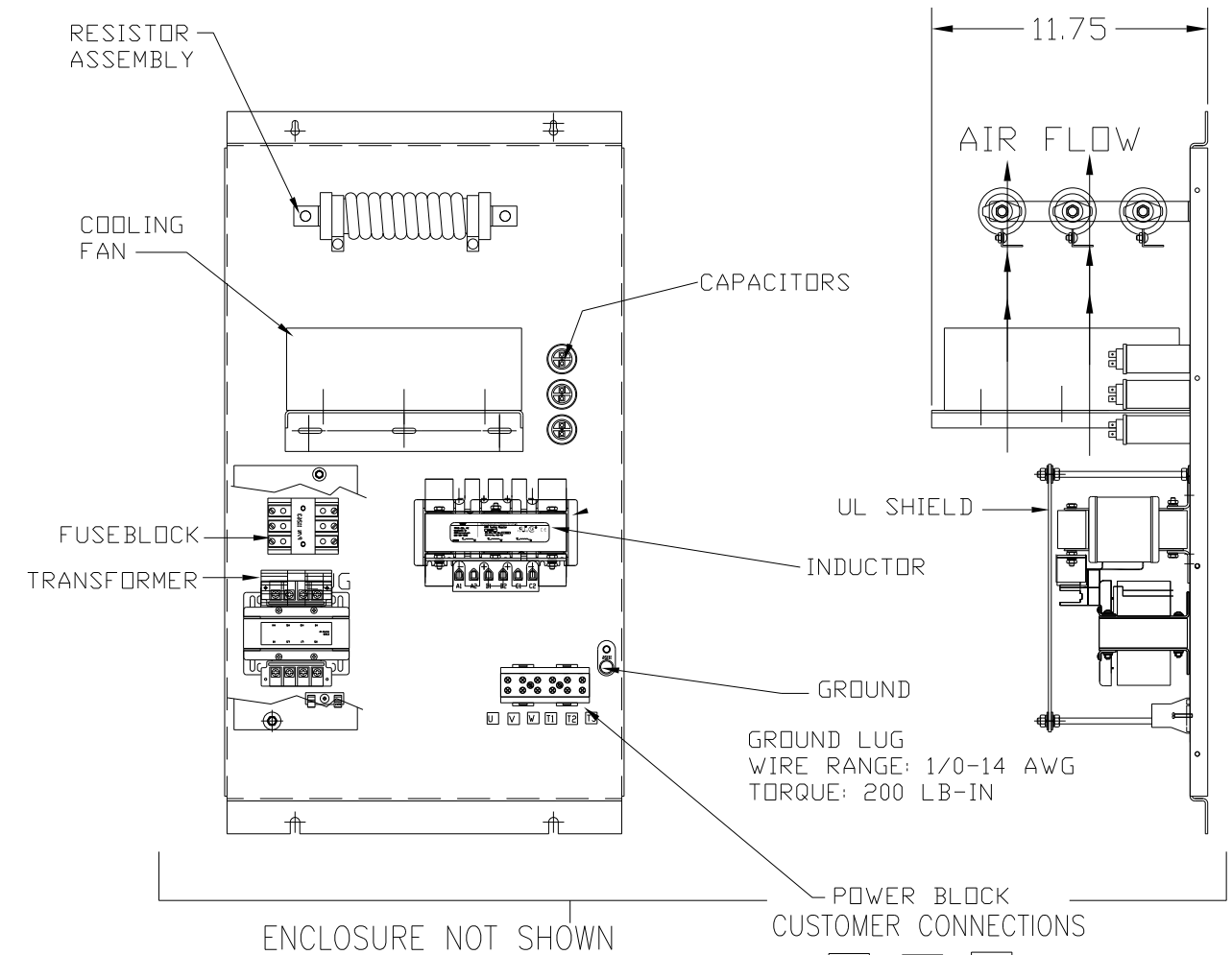
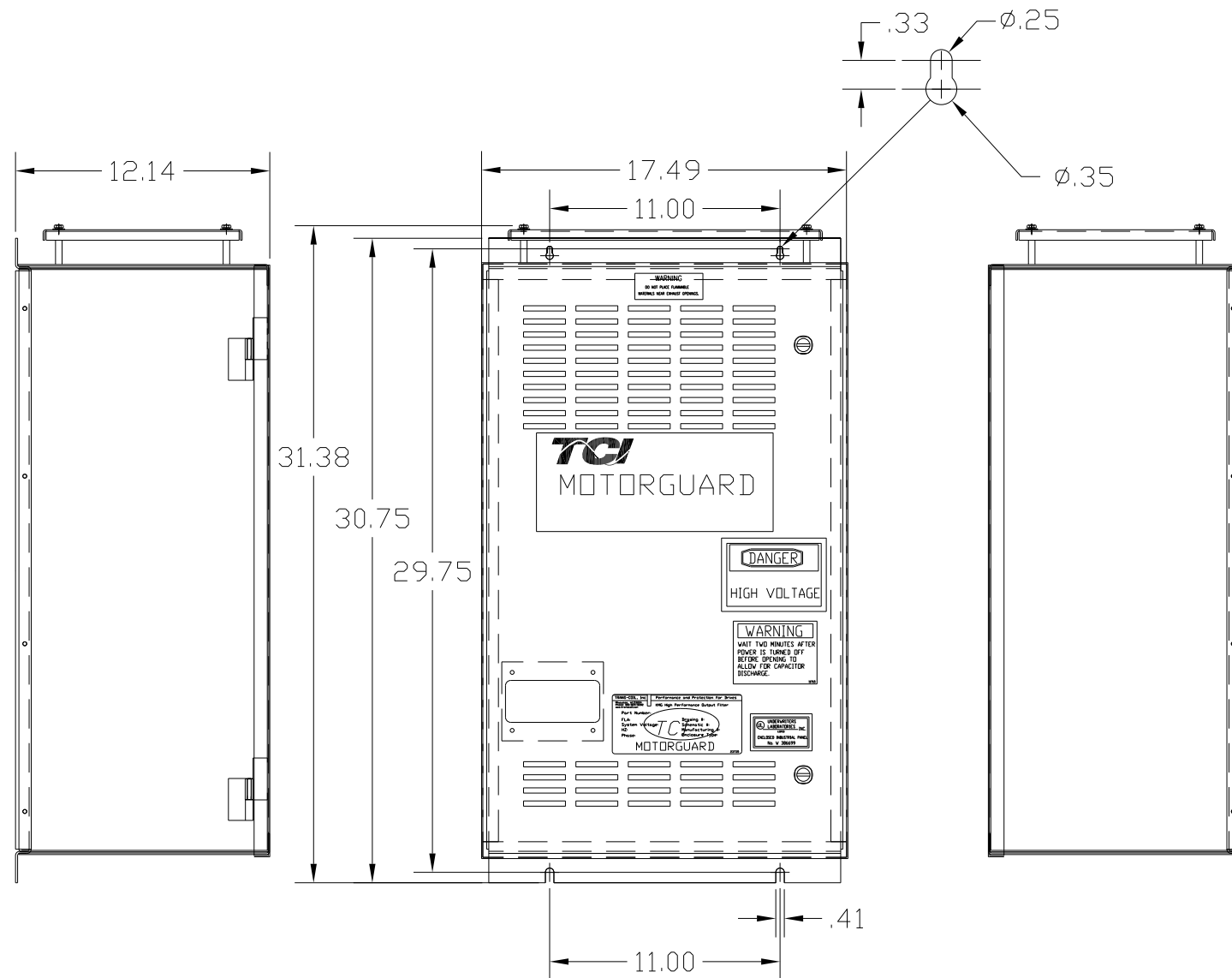


KMG16A01A
 APPROX WEIGHT: 119LBS



KMG HIGH PERFORMANCE OUTPUT FILTER
 PART NUMBER: KMG16A01A
 FLA: 16 DRAWING#: 104350DG
 SYSTEM VOLTAGE: 480 SCHEMATIC: 24281-1A
 HZ: 80
 PHASE: 3
 MOTORGUARD



FOR SCHEMATIC SEE DRAWING P/N 24281-1A

LINE CONNECTIONS
 WIRE RANGE: 1 AWG THRU 4 AWG 35 LB-IN
 6 AWG THRU 14 AWG 30 LB-IN
 16 AWG THRU 22 AWG 25 LB-IN

CUSTOMER IS RESPONSIBLE FOR PROPER
 INSTALLATION OF ASSEMBLY IN ACCORDANCE
 WITH LOCAL AND NATIONAL CODES.

				TOLERANCES (EXCEPT AS NOTED): DECIMAL	7878 N. 86th STREET MILWAUKEE, WI 53224 Standard SineWave Filter ENCLOSED, 10HP, 16AMP, 480V
				.XX ± .02	
				.XXX ± .01	
				FRACTIONAL ± 1/32	
NO	REVISION	DATE	BY	ANGULAR ± 1/2°	DRN. BY: DSW DATE: 10/07/2010 DWG. NO.: 104350DG SCALE: TO FIT APRVD. C SHT. 1 OF 1