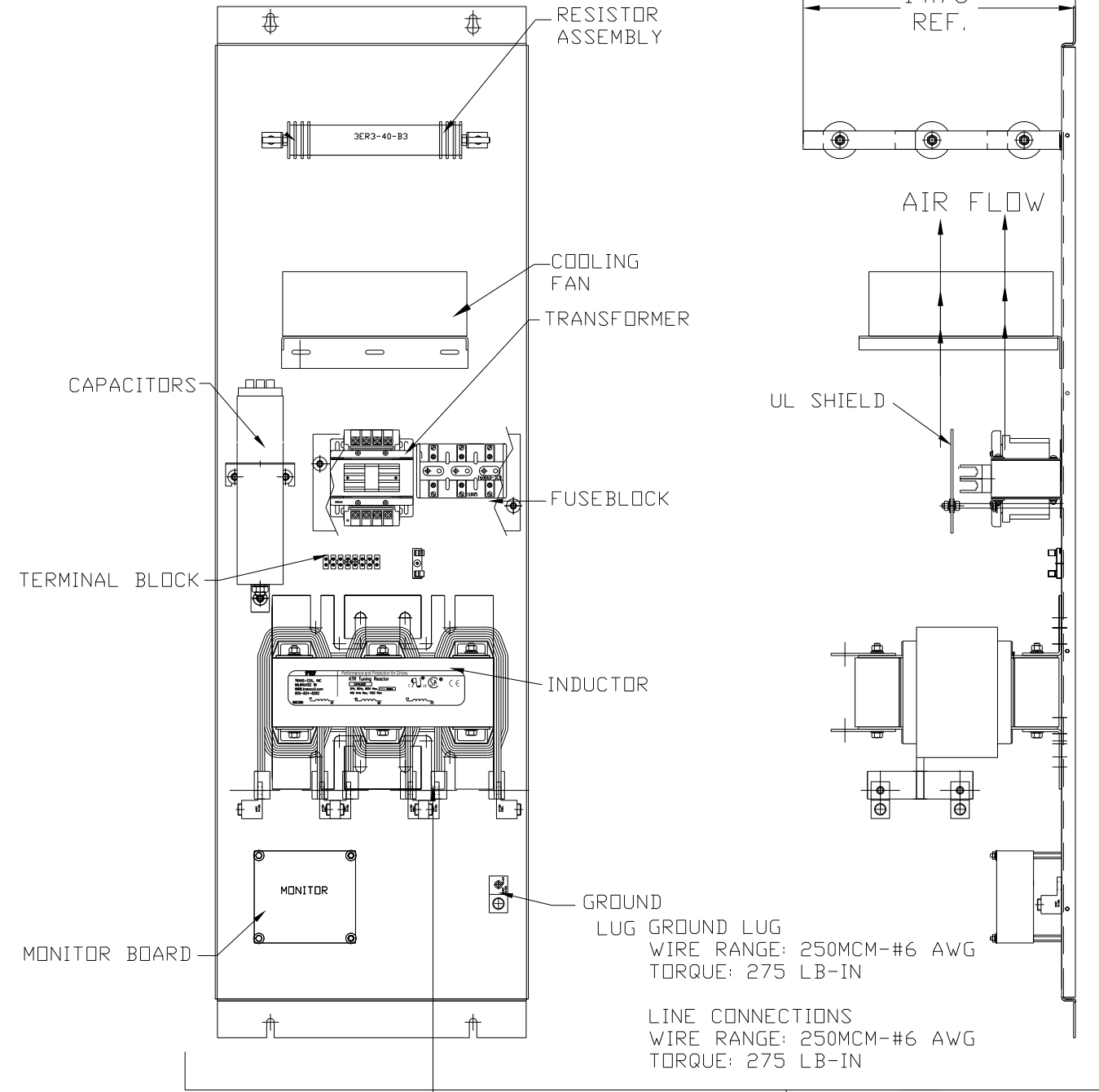
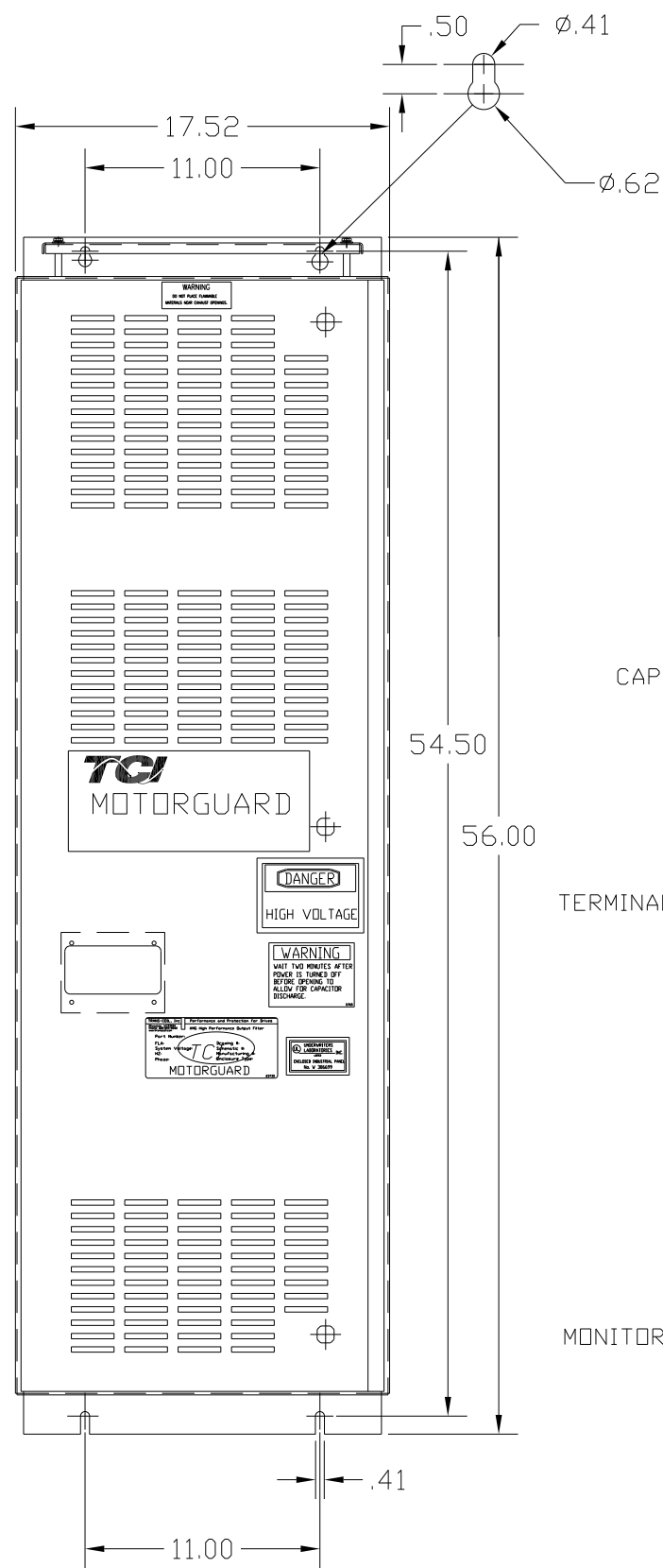
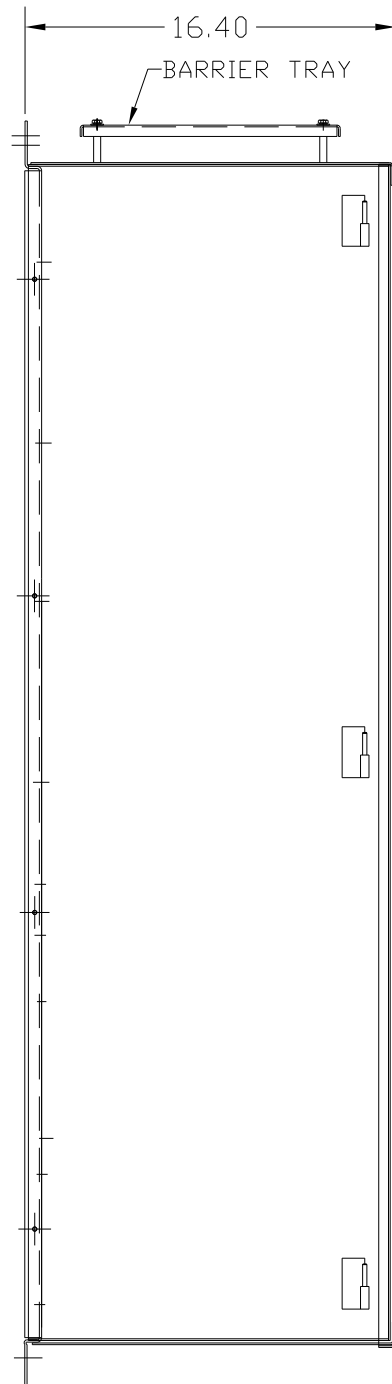


KMG160C01A

APPROX WEIGHT: 338LBS

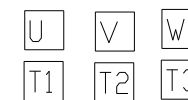
FOR SCHEMATIC SEE DRAWING P/N 24281-23A



SUGGESTED LOCATION FOR CUSTOMER INPUT/OUTPUT

ENCLOSURE NOT SHOWN

CUSTOMER CONNECTIONS



CUSTOMER IS RESPONSIBLE FOR PROPER INSTALLATION OF ASSEMBLY IN ACCORDANCE WITH LOCAL AND NATIONAL CODES.

KMG HIGH PERFORMANCE OUTPUT FILTER

PART NUMBER: KMG160C01A

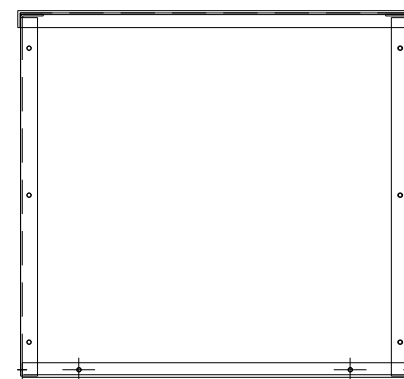
FLA: 160 DRAWING#: 104447DG

SYSTEM VOLTAGE: 600 SCHEMATIC: 24281-23A

HZ: 80

PHASE: 3

MOTORGUARD



				TOLERANCES (EXCEPT AS NOTED)		7878 N. 86th STREET MILWAUKEE, WI 53224	
				DECIMAL			
				.XX ± .02		Standard, SineWave Filter ENCLOSED, 150HP, 160AMP, 600V	
				.XXX ± .01			
				FRACTIONAL		DRN. BY: DSW DATE: 10/14/2010 DWG. NO.: 104447DG	
				± 1/32		SCALE: TO FIT APRVD. SHT. 1 OF 1	
				ANGULAR			
				± 1/2°			
NO	REVISION	DATE	BY				