

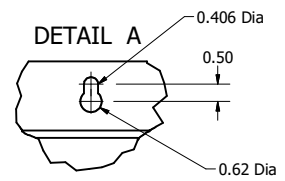
SineWave Part Number	Schematic Drawing#	Approx Weight (LBS)
KMG160C01A	24281-23A	338
KMG160C01P	24281-23P	339

HorsePower (HP)	kVar	Max Amps	Voltage (V)	HZ	Phase
150	15	160	600	60	3

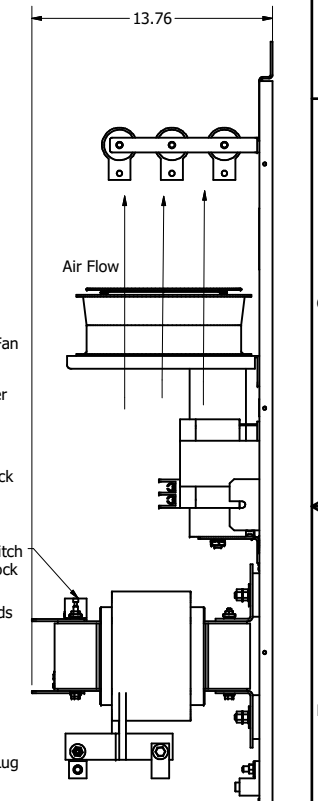
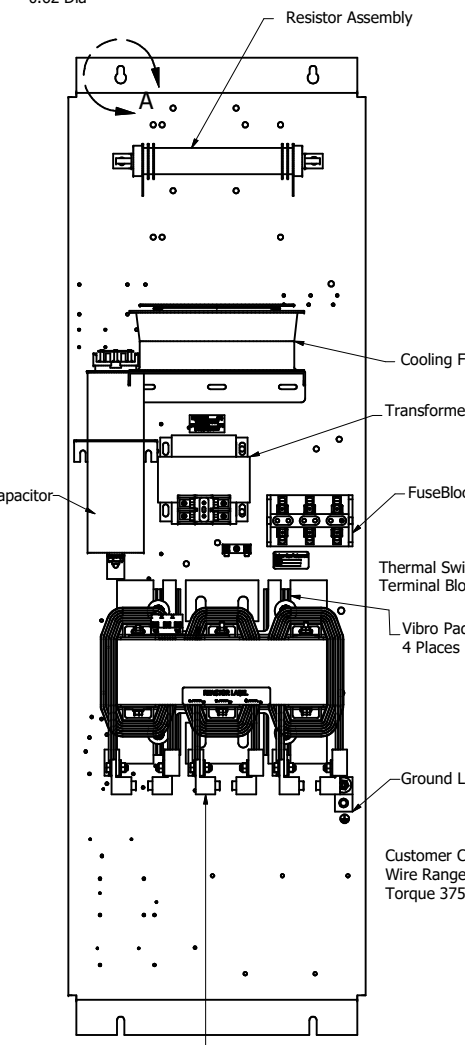
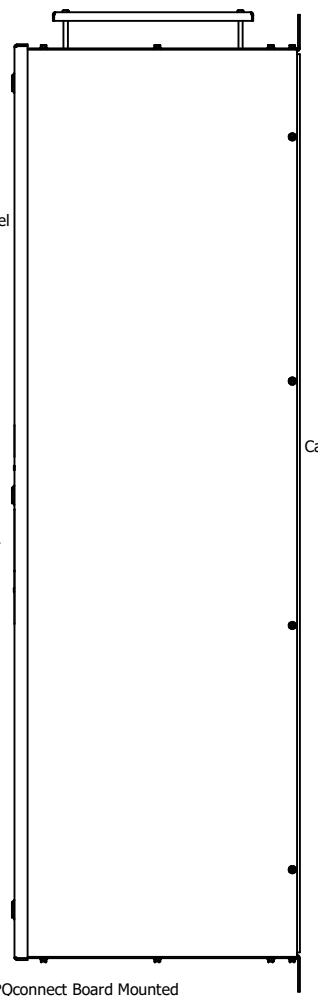
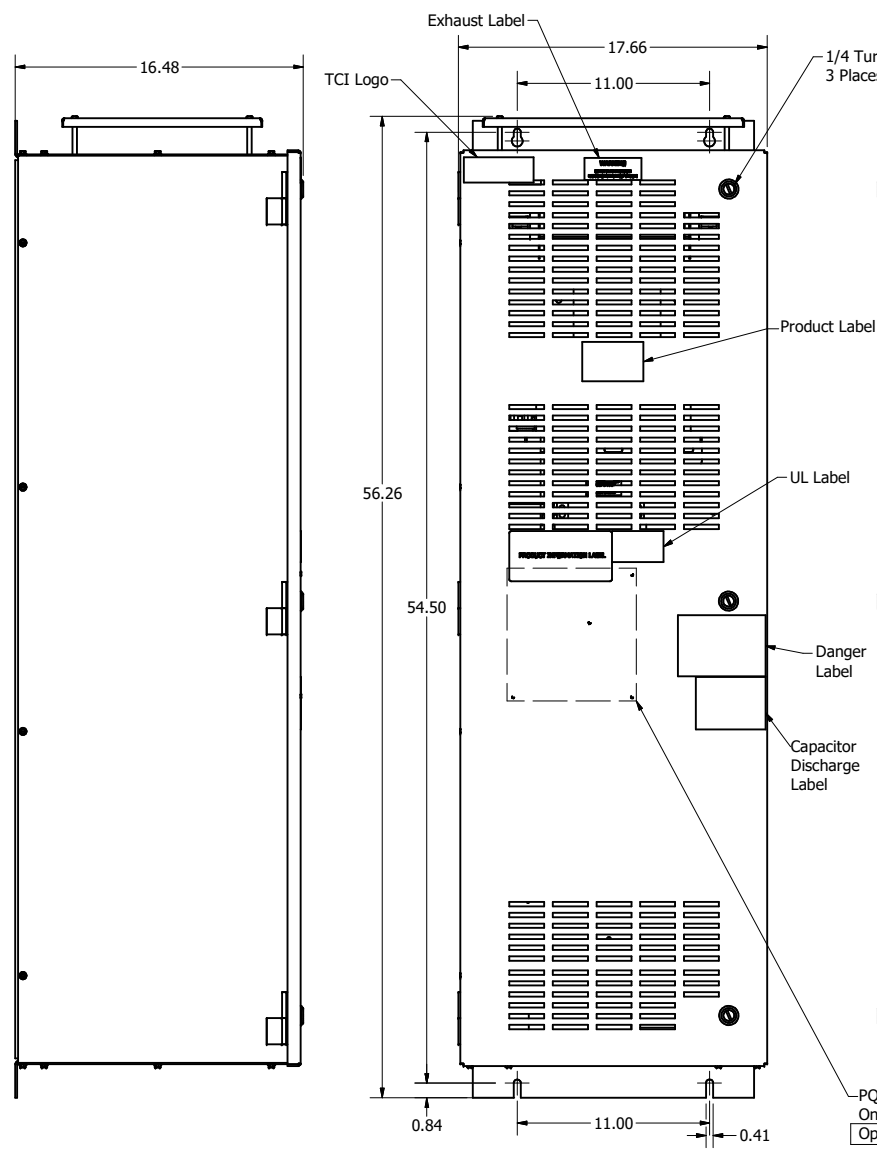
1

Thermal Switch Terminal Block

Wire Range: 18 AWG To 4 AWG.
Torque: 20 LB-IN (2.3 Nm)
Switch Opens on Temperature Rise
Contact Rating: 6A @ 120 VAC

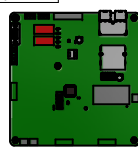


D
C
B
A



Customer Connections And Ground:
Wire Range -250MCM to #2 AWG
Torque 375 lbs-in

Customer Is Responsible For Installation to Meet All National And Local Electrical Codes.
Material(s) Shall be RoHS Compliant



TCI, LLC CLAIMS PROPRIETARY RIGHTS IN THE MATERIAL HEREIN DISCLOSED. IT IS SUPPLIED WITHOUT PREJUDICE TO ANY PATENT RIGHTS OF TCI AND MAY NOT BE REPRODUCED OR USED TO MANUFACTURE ANYTHING SHOWN THEREIN WITHOUT WRITTEN PERMISSION FROM TCI.				TOLERANCES (EXCEPT AS NOTED)		W132 N10611 Grant Drive Germantown, WI 53022 KMG160C01- SineWave Filter Enclosed Type 1, 150HP, 600V	
				DECIMAL	.XX ±.25	DWN BY: DSW DATE: 10/14/2016 104447DG	
				FRACTIONAL	± 1/16	SCALE: 1/5.5 SHEET 1 OF 1	
ID	Add PQconnect Board	9/2/2020	DSW	ANGULAR	± 1°		
NO	REVISION	DATE	BY				