

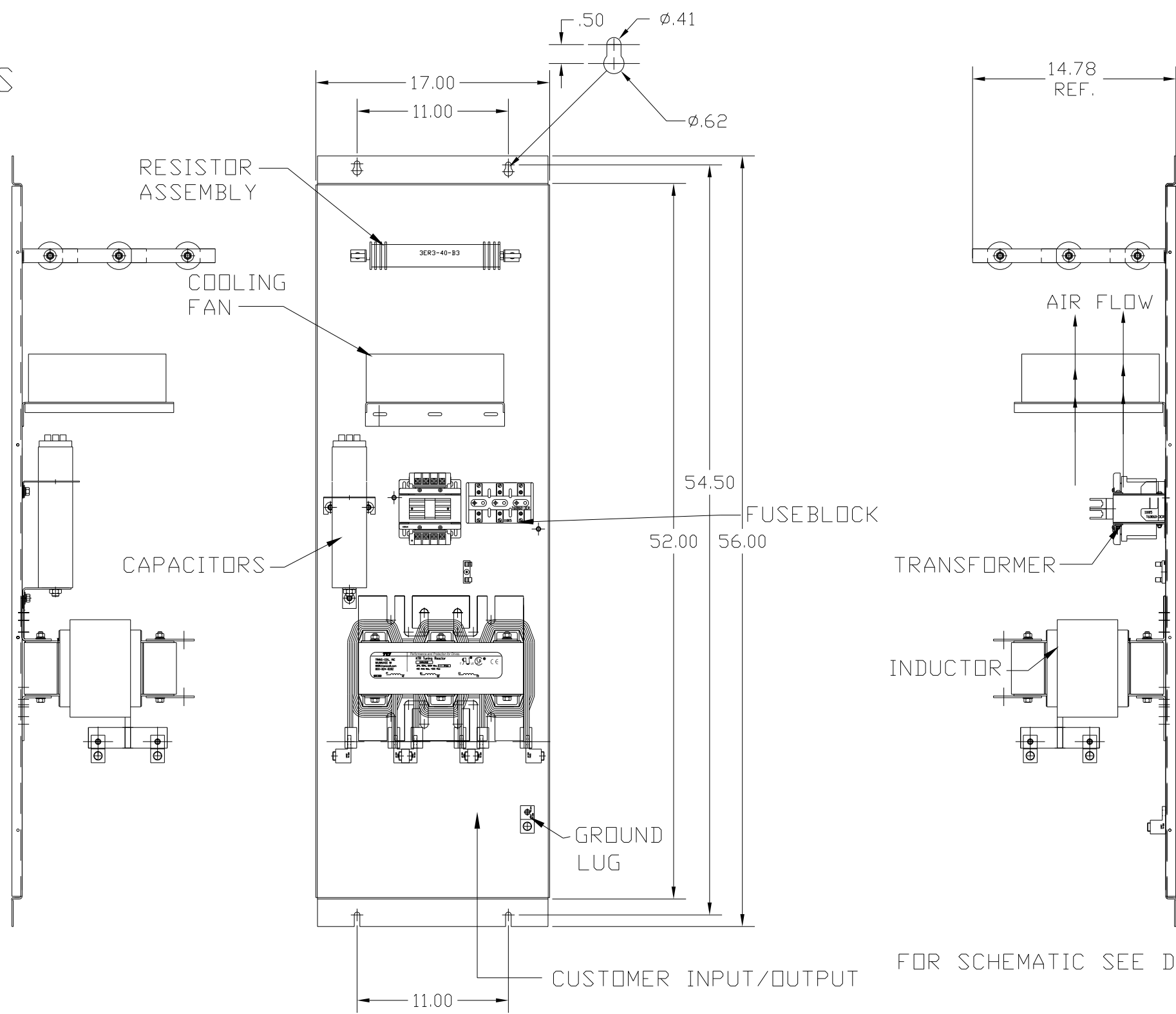
KMG160C00A

APPROX WEIGHT: 259LBS

KMG HIGH PERFORMANCE OUTPUT FILTER

PART NUMBER: KMG160C00A
 FLA: 160
 SYSTEM VOLTAGE: 600
 HZ: 80
 PHASE: 3

MOTORGUARD



FOR SCHEMATIC SEE DRAWING P/N 24281-23A

CUSTOMER IS RESPONSIBLE FOR PROPER COOLING OF COMPONENTS IN CUSTOMERS ASSEMBLY

CUSTOMER IS RESPONSIBLE FOR PROPER INSTALLATION OF ASSEMBLY IN ACCORDANCE WITH LOCAL AND NATIONAL CODES.

GROUND LUG
 WIRE RANGE: 250MCM-#6 AWG
 TORQUE: 275 LB-IN

LINE CONNECTIONS
 WIRE RANGE: 250MCM-#6 AWG
 TORQUE: 275 LB-IN

NO	REVISION	DATE	BY

		7878 N. 86th STREET MILWAUKEE, WI 53224	
Standard, SineWave Filter Open, 150HP, 160AMP, 600V			
DRN. BY	DSW	DATE	10/12/2010
SCALE	TO FIT	APRVD.	
DWG. NO. B 104426DG		SHT. 1 OF 1	