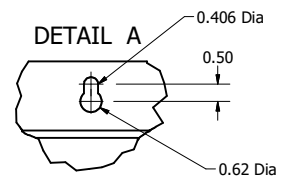
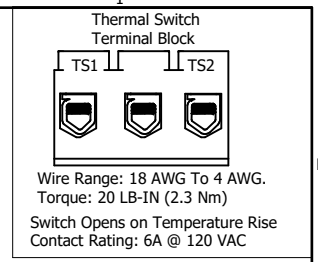
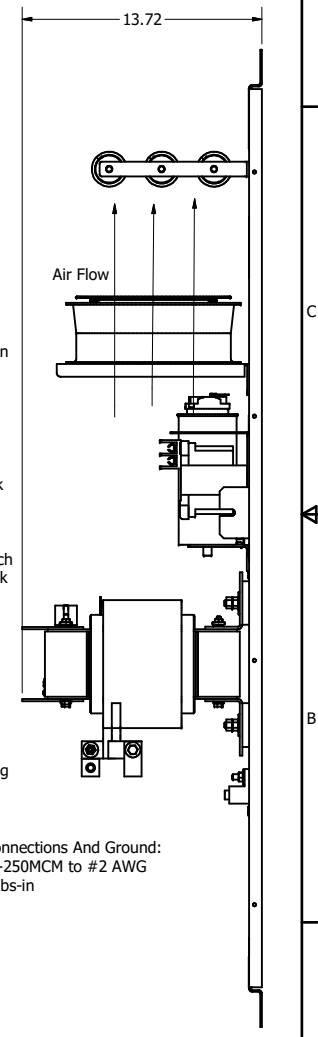
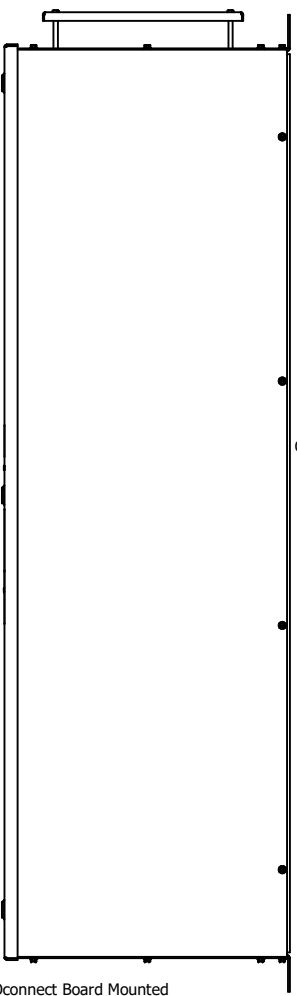
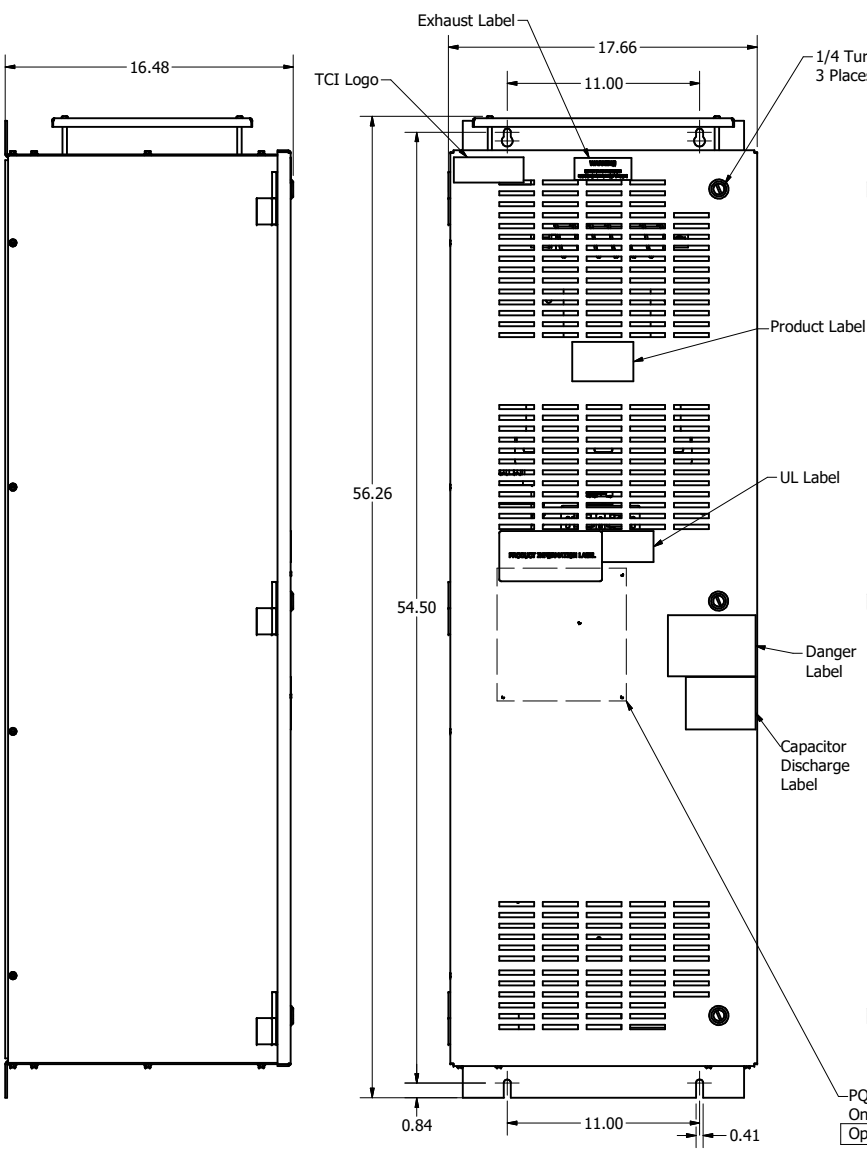


SineWave Part Number	Schematic Drawing#	Approx Weight (LBS)
KMG160A01A	24281-3A	339
KMG160A01P	24281-3P	340

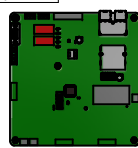
HorsePower (HP)	kVar	Max Amps	Voltage (V)	HZ	Phase
125	10	160	480	60	3



D  
C  
B  
A



PQconnect Board Mounted On Inside Of Door. Optional



Customer Connections  
U V W  
T1 T2 T3

Customer Connections And Ground:  
Wire Range -250MCM to #2 AWG  
Torque 375 lbs-in

Customer Is Responsible For Installation to Meet All National And Local Electrical Codes.

Material(s) Shall be RoHS Compliant

TCI, LLC CLAIMS PROPRIETARY RIGHTS IN THE MATERIAL HEREIN DISCLOSED. IT IS SUPPLIED WITHOUT PREJUDICE TO ANY PATENT RIGHTS OF TCI AND MAY NOT BE REPRODUCED OR USED TO MANUFACTURE ANYTHING SHOWN THEREIN WITHOUT WRITTEN PERMISSION FROM TCI.				TOLERANCES (EXCEPT AS NOTED) DECIMAL .XX ± .25 .XXX ± .10 FRACTIONAL ± 1/16 ANGULAR ± 1°		W132 N10611 Grant Drive Germanstown, WI 53022  KMG160A01- SineWave Filter Enclosed Type 1, 125HP, 480V DSW BY DATE 10/07/2014 104360DG SCALE: 1/5.5 DRAWN: DATE: CDR SHEET 1 OF 1	
ID	Add PQconnect Board	9/2/2020	DSW				
NO	REVISION	DATE	BY				