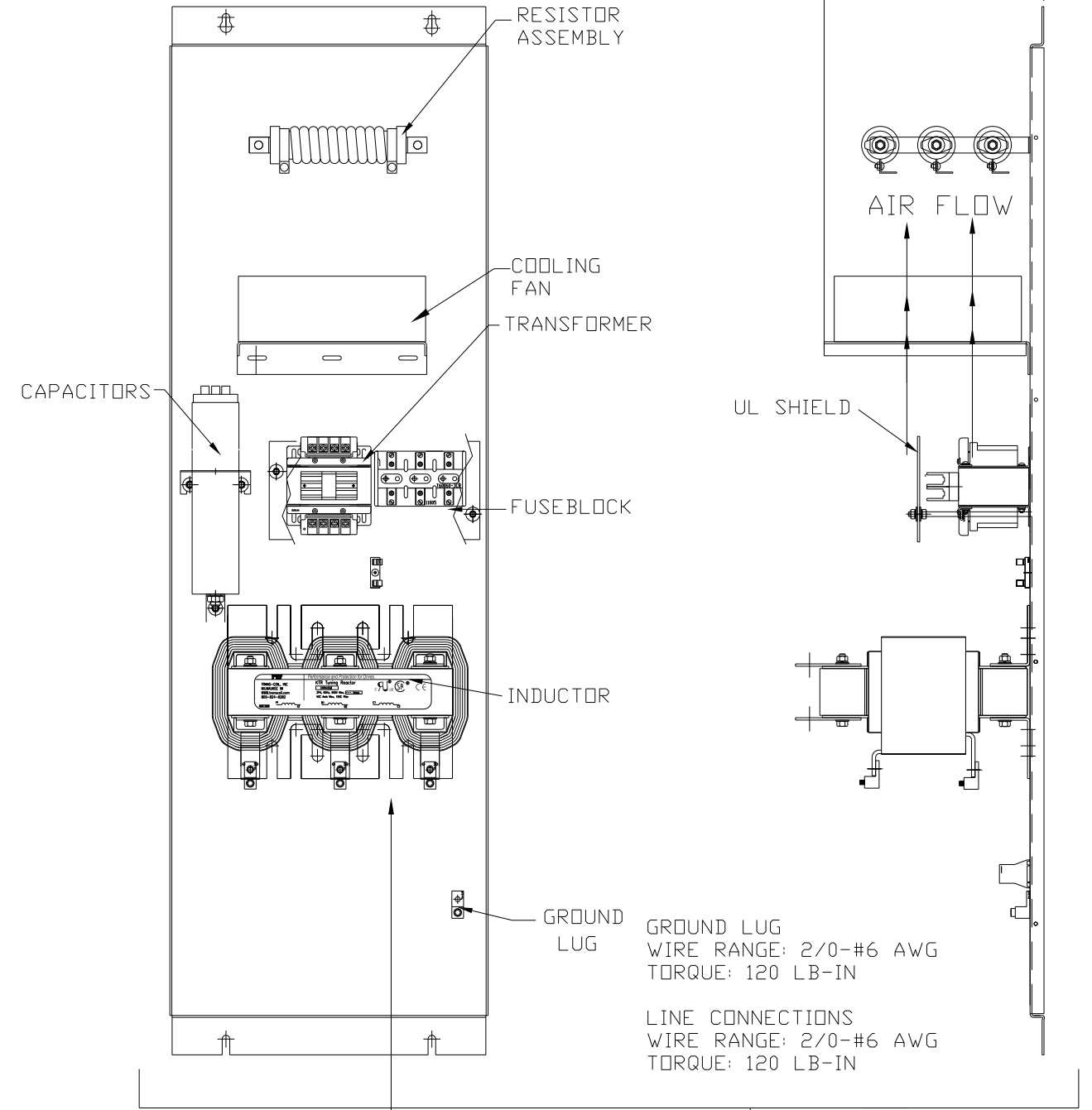
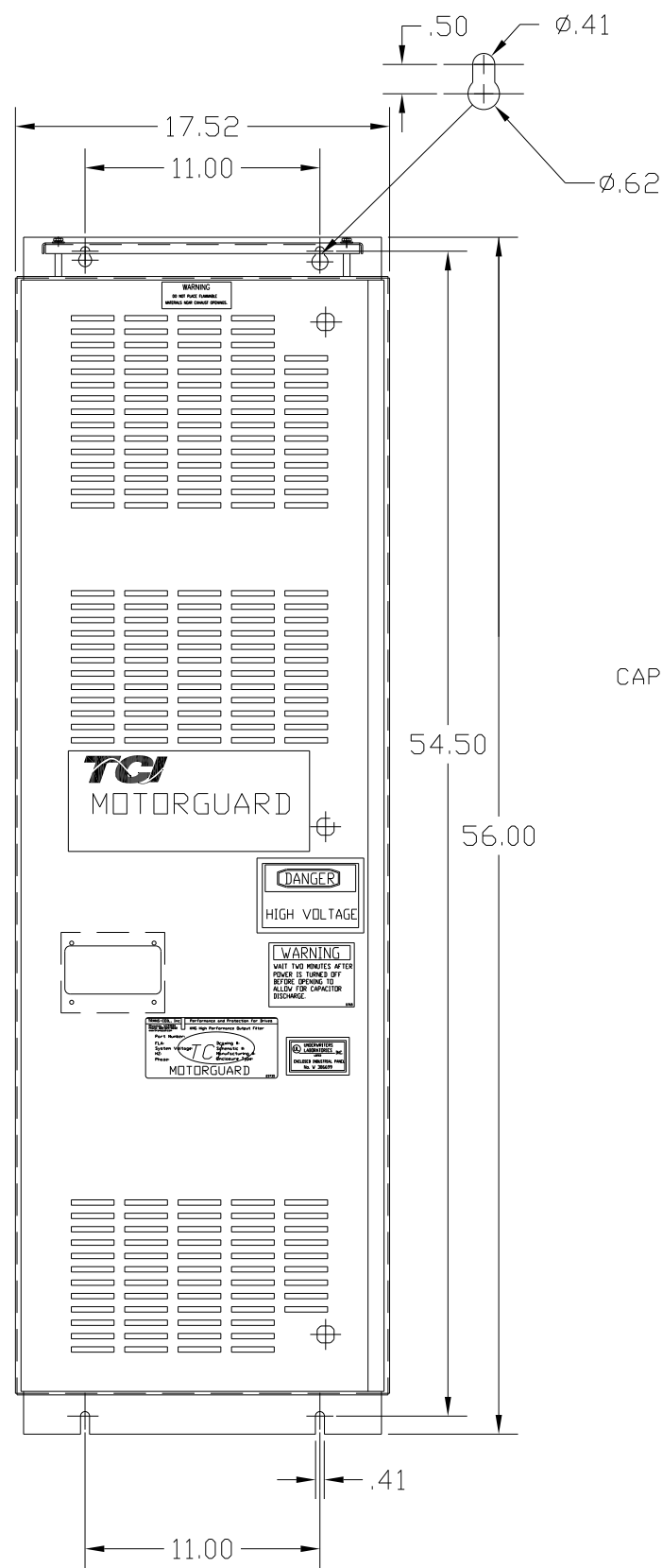
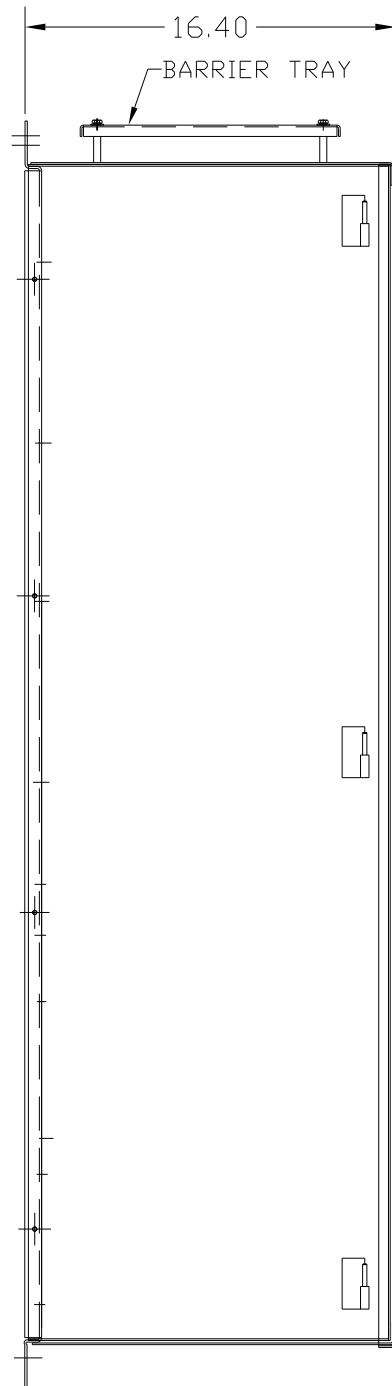


KMG130C01A

APPROX WEIGHT: 293LBS

FOR SCHEMATIC SEE DRAWING P/N 24281-23A



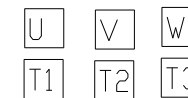
GROUND LUG
WIRE RANGE: 2/0-#6 AWG
TORQUE: 120 LB-IN

LINE CONNECTIONS
WIRE RANGE: 2/0-#6 AWG
TORQUE: 120 LB-IN

SUGGESTED LOCATION FOR CUSTOMER INPUT/OUTPUT

ENCLOSURE NOT SHOWN

CUSTOMER CONNECTIONS



CUSTOMER IS RESPONSIBLE FOR PROPER INSTALLATION OF ASSEMBLY IN ACCORDANCE WITH LOCAL AND NATIONAL CODES.

KMG HIGH PERFORMANCE OUTPUT FILTER

PART NUMBER: KMG130C01A

FLA: 130

SYSTEM VOLTAGE: 600

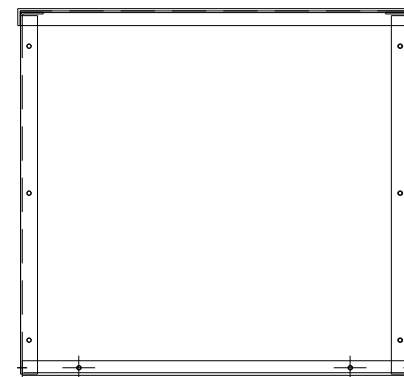
HZ: 80

PHASE: 3

DRAWING#: 104446DG

SCHEMATIC: 24281-23A

MOTORGUARD



				TOLERANCES (EXCEPT AS NOTED)		7878 N. 86th STREET MILWAUKEE, WI 53224	
				DECIMAL		Standard, SineWave Filter	
				.XX ± .02		ENCLOSED, 125HP, 130AMP, 600V	
				.XXX ± .01		DRN. BY: DSW DATE: 10/14/2010 DWG. NO: 104446DG	
				FRACTIONAL		SCALE: TO FIT	
				± 1/32		APRVD. C	
				ANGULAR		SHT. 1 OF 1	
				± 1/2°			
NO	REVISION	DATE	BY				