

KMG12C00A

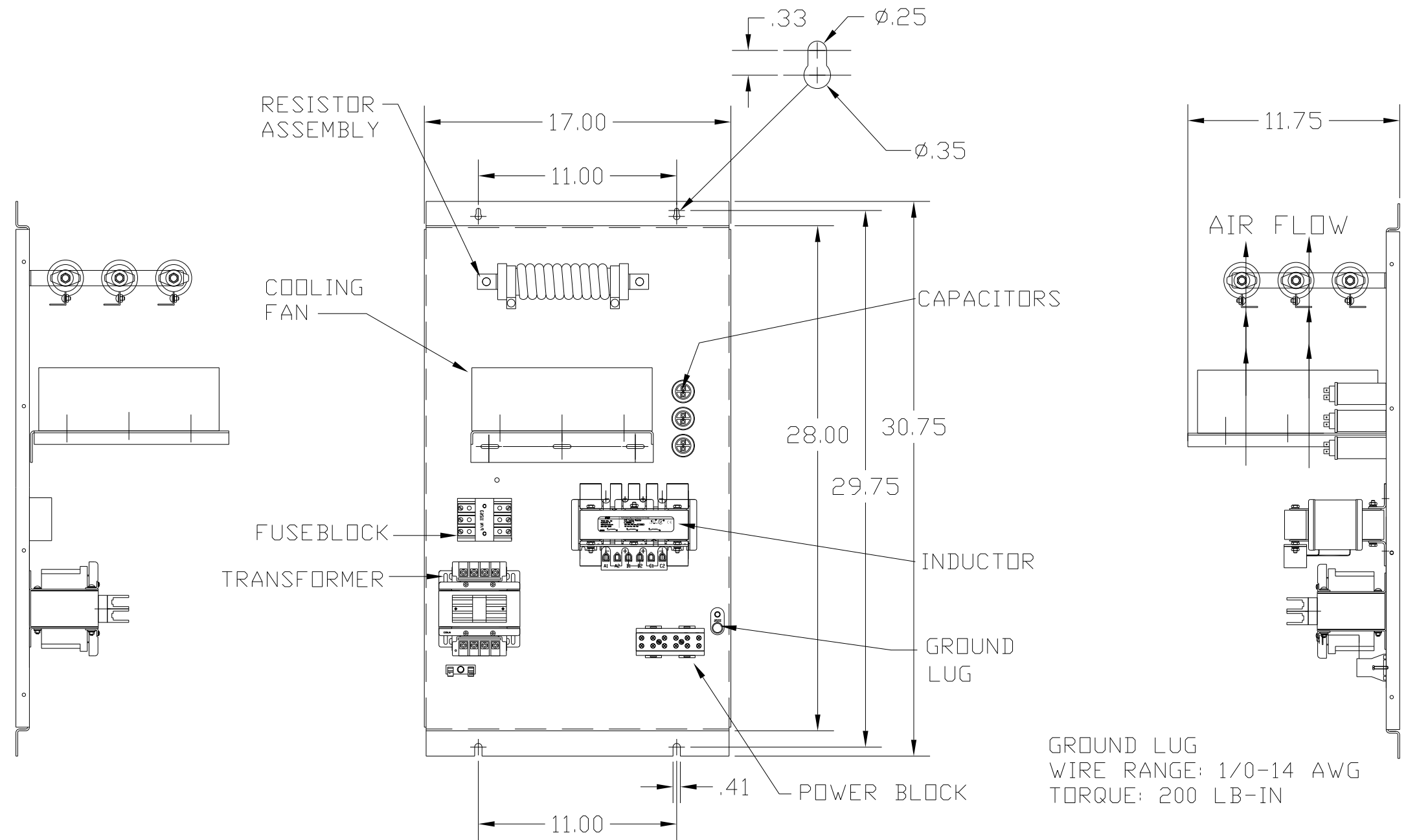
APPROX WEIGHT: 69LBS

KMG HIGH PERFORMANCE OUTPUT FILTER

PART NUMBER: KMG12C00A
 FLA: 12
 SYSTEM VOLTAGE: 600
 HZ: 80
 PHASE: 3

DRAWING#: 104415DG
 SCHEMATIC: 24281-11A

MOTORGUARD



LINE CONNECTIONS

WIRE RANGE: 1 AWG THRU 4 AWG 35 LB-IN
 6 AWG THRU 14 AWG 30 LB-IN
 16 AWG THRU 22 AWG 25 LB-IN

FOR SCHEMATIC SEE DRAWING P/N 24281-11A

CUSTOMER IS RESPONSIBLE FOR PROPER COOLING OF COMPONENTS IN CUSTOMERS ASSEMBLY.

CUSTOMER IS RESPONSIBLE FOR PROPER INSTALLATION OF ASSEMBLY IN ACCORDANCE WITH LOCAL AND NATIONAL CODES.

| | | | | | | | |
|----|----------|------|----|---------------------------------|--|--------------------|----------------------|
| | | | | | | | |
| | | | | TOLERANCES (EXCEPT AS NOTED) | 7878 N. 86th STREET MILWAUKEE, WI 53224 | | |
| | | | | DECIMAL | | | |
| | | | | .XX ± .02 .XXX ± .01 | | | |
| | | | | FRACTIONAL ± 1/32 | Standard, SineWave Filter Open, 10HP, 12AMP, 600V | | |
| | | | | ANGULAR ± 1/2° | | | |
| NO | REVISION | DATE | BY | | DRN. BY DSW | DATE 10/12/2010 | DWG. NO. 104415DG |
| | | | | | SCALE TO FIT | APRVD. | B SHT.1 OF1 |