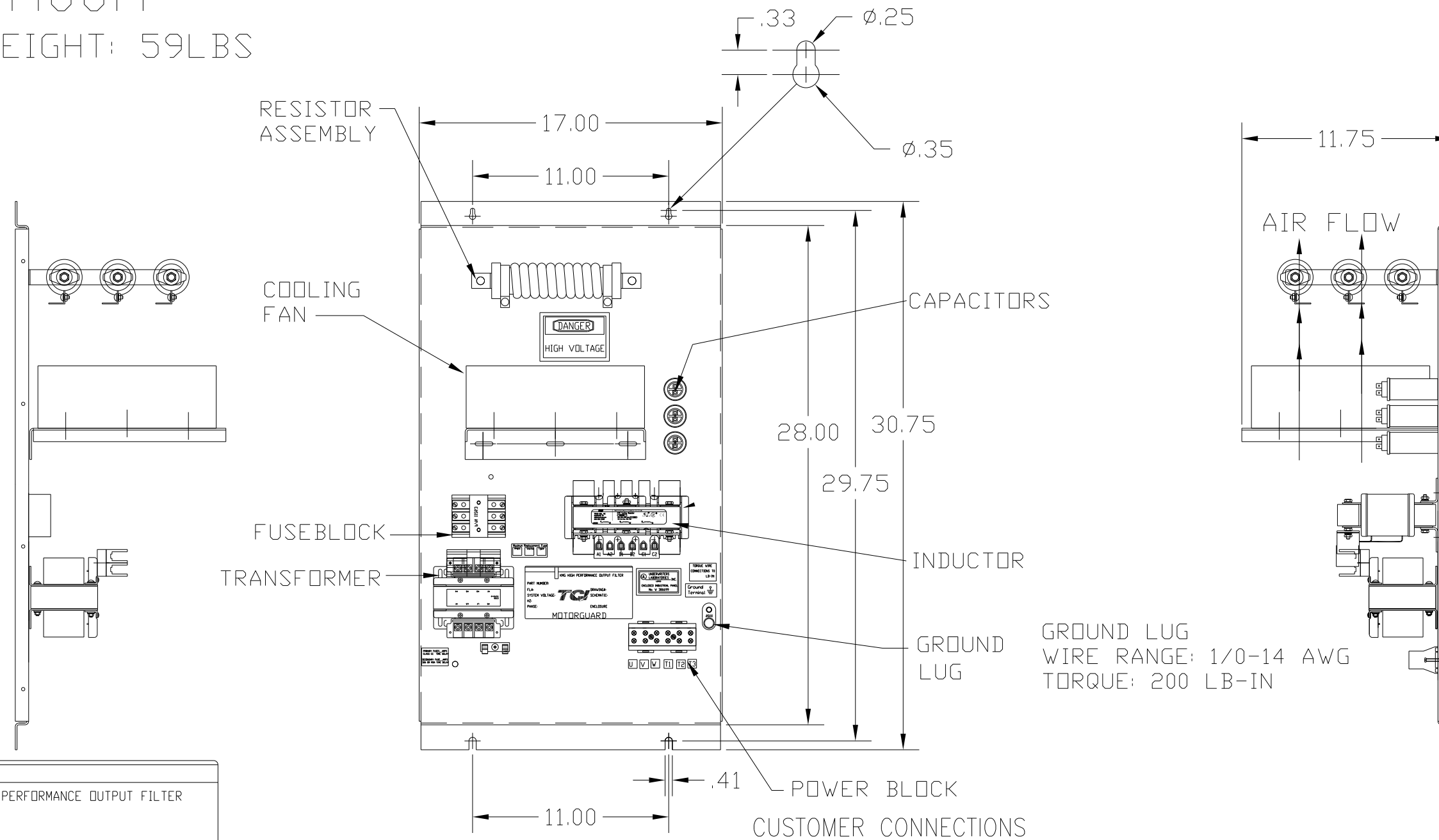


# KMG12A00A

APPROX WEIGHT: 59LBS

FOR SCHEMATIC SEE DRAWING P/N 24281-1A



KMG HIGH PERFORMANCE OUTPUT FILTER

PART NUMBER: KMG12A00A

FLA: 12      DRAWING#: 104327DG

SYSTEM VOLTAGE: 480      SCHEMATIC: 24281-1A

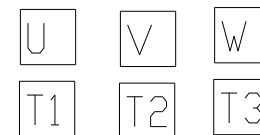
HZ: 80

PHASE: 3

**MOTORGUARD**

CUSTOMER IS RESPONSIBLE FOR PROPER COOLING OF COMPONENTS IN CUSTOMERS ASSEMBLY.

CUSTOMER IS RESPONSIBLE FOR PROPER INSTALLATION OF ASSEMBLY IN ACCORDANCE WITH LOCAL AND NATIONAL CODES.



CUSTOMER CONNECTIONS  
 WIRE RANGE: 1 AWG THRU 4 AWG 35 LB-IN  
 6 AWG THRU 14 AWG 30 LB-IN  
 16 AWG THRU 22 AWG 25 LB-IN

				TOLERANCES (EXCEPT AS NOTED)	7878 N. 86th STREET MILWAUKEE, WI 53224  Standard SineWave Filter Open, 7.5HP, 12AMP, 480V
				DECIMAL	
				.XX ± .02 .XXX ± .01	
				FRACTIONAL ± 1/32	
				ANGULAR ± 1/2°	DRN. BY DSW    DATE 10/04/2010    DWG. NO. 104327DG
NO	REVISION	DATE	BY	SCALE TO FIT	APRVD.    B    SHT. 1 of 1