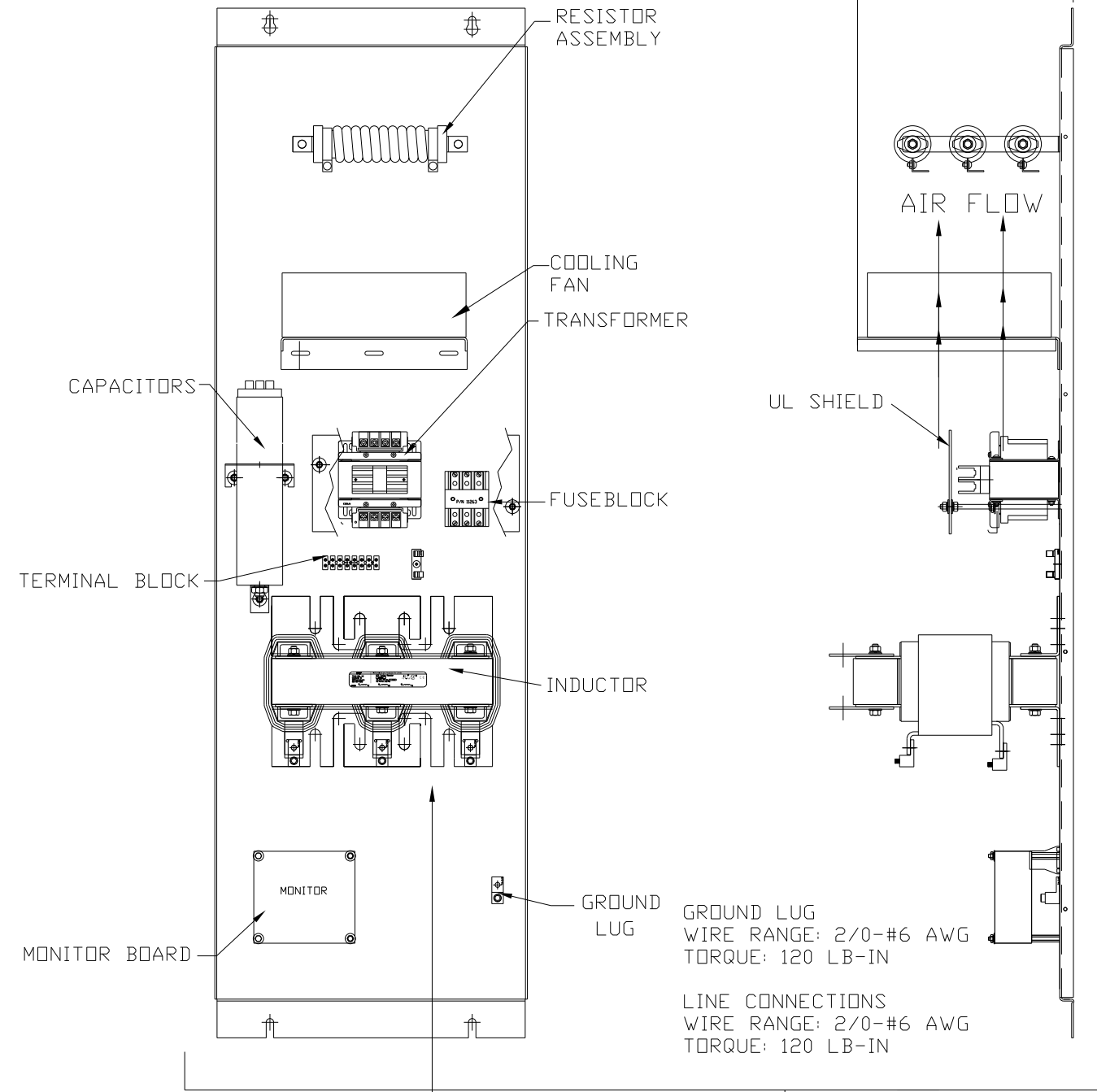
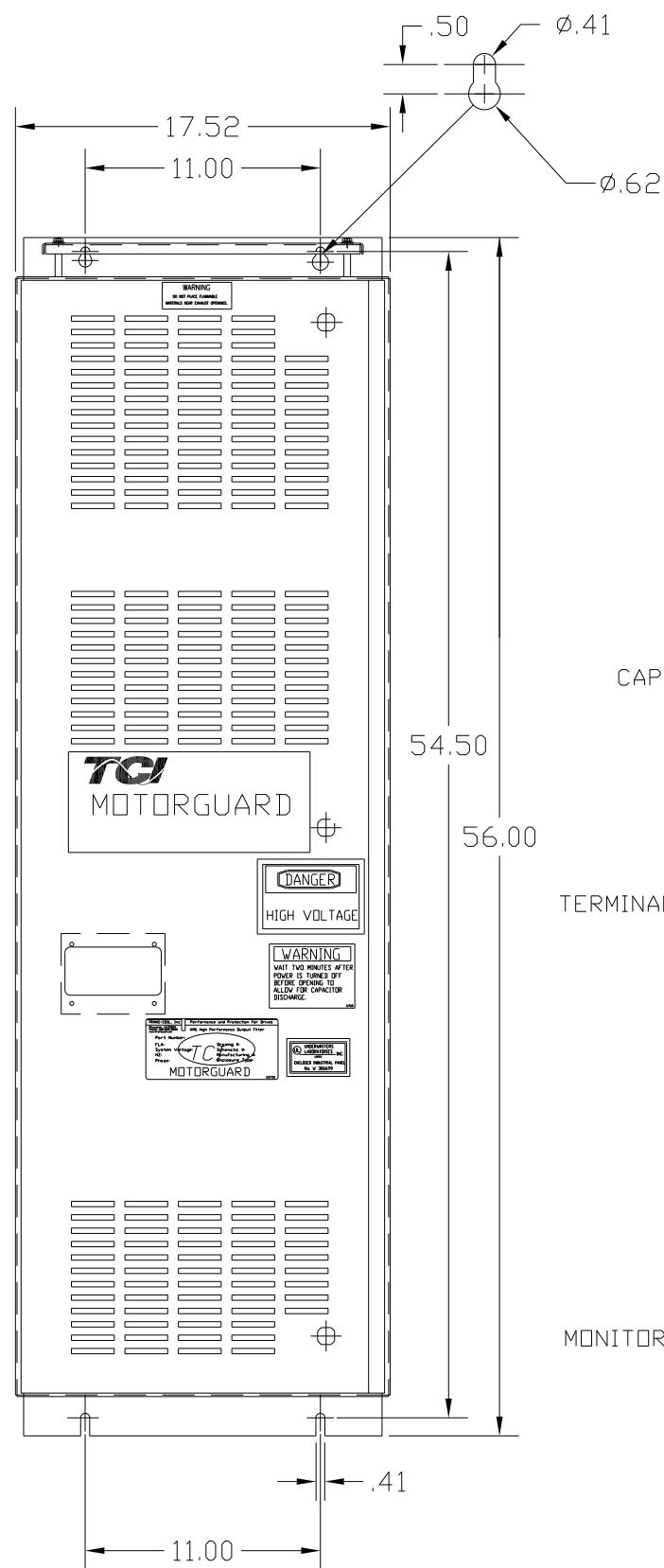
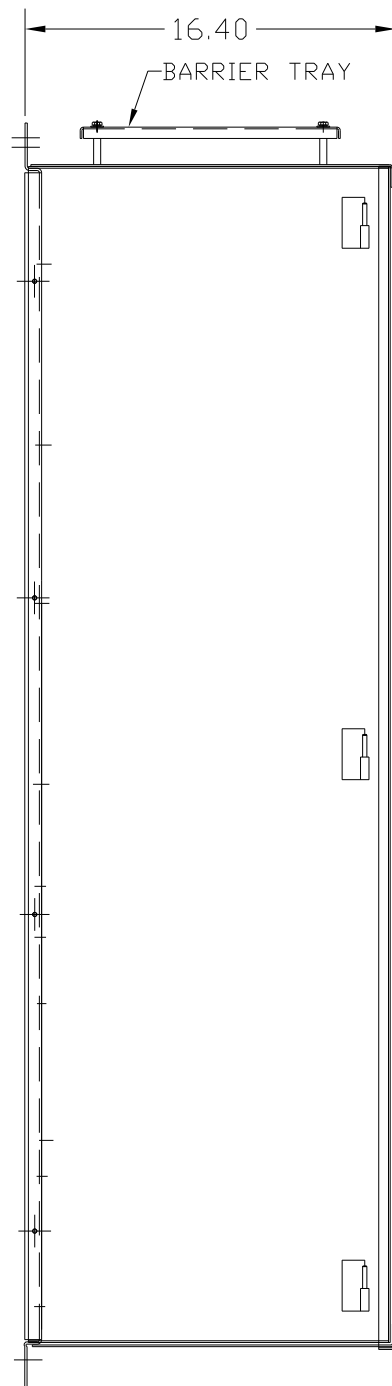


KMG110C01A

APPROX WEIGHT: 289LBS

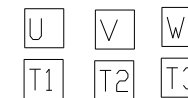
FOR SCHEMATIC SEE DRAWING P/N 24281-23A



SUGGESTED LOCATION FOR CUSTOMER INPUT/OUTPUT

ENCLOSURE NOT SHOWN

CUSTOMER CONNECTIONS



CUSTOMER IS RESPONSIBLE FOR PROPER INSTALLATION OF ASSEMBLY IN ACCORDANCE WITH LOCAL AND NATIONAL CODES.

KMG HIGH PERFORMANCE OUTPUT FILTER

PART NUMBER: KMG65C01A

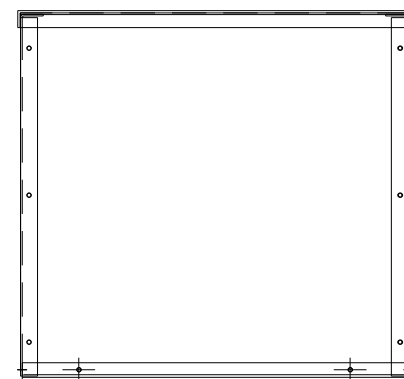
FLA: 110 DRAWING#: 104445DG

SYSTEM VOLTAGE: 600 SCHEMATIC: 24281-23A

HZ: 80

PHASE: 3

MOTORGUARD



				TOLERANCES (EXCEPT AS NOTED):	7878 N. 86th STREET MILWAUKEE, WI 53224 Standard, SineWave Filter ENCLOSED, 100HP, 110AMP, 600V
				DECIMAL	
				.XX ± .02 .XXX ± .01	
				FRACTIONAL ± 1/32	
				ANGULAR ± 1/2°	DRN. BY: DSW DATE: 10/14/2010 DWG. NO.: 104445DG SCALE: TO FIT APRVD. SHT. 1 OF 1
NO	REVISION	DATE	BY		