

KMG110C00A

APPROX WEIGHT: 224LBS

KMG HIGH PERFORMANCE OUTPUT FILTER

PART NUMBER: KMG110C00A

FLA: 110 DRAWING#: 104424DG

SYSTEM VOLTAGE: 600 SCHEMATIC: 24281-23A

HZ: 60

PHASE: 3

MOTORGUARD

Thermal Switch Terminal Block

Wire Range: 18 AWG To 4 AWG.
Torque: 20 LB-IN (2.3 Nm)

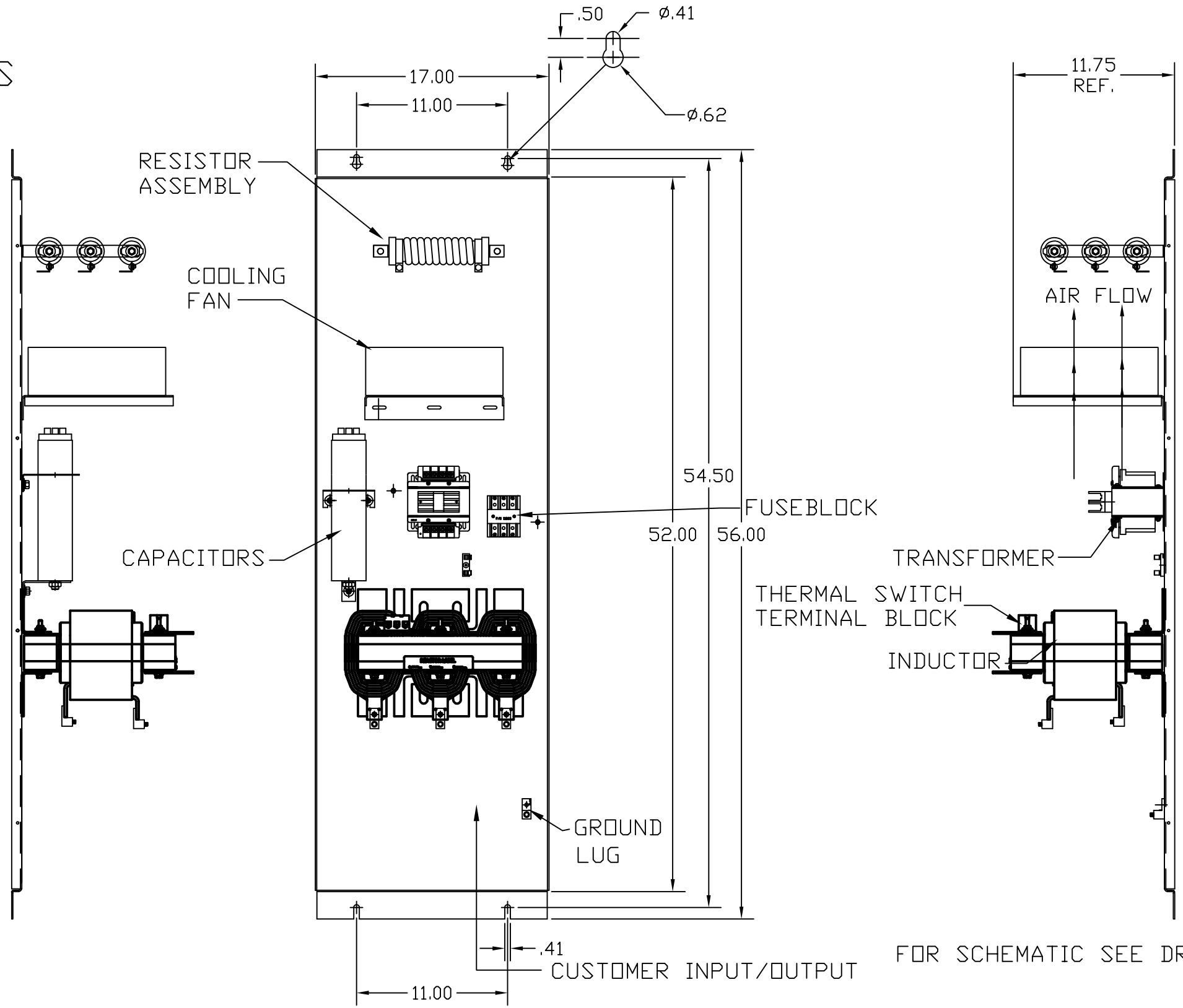
Switch Opens on Temperature Rise
Contact Rating: 6A @ 120 VAC

CUSTOMER CONNECTIONS AND GROUND LUG.

WIRE SIZE (AWG)	RATED TORQUE (IN-LBS)
2/0-3	50
4-6	45
8	40
10-14	35

CUSTOMER IS RESPONSIBLE FOR PROPER COOLING OF COMPONENTS IN CUSTOMERS ASSEMBLY

CUSTOMER IS RESPONSIBLE FOR PROPER INSTALLATION OF ASSEMBLY IN ACCORDANCE WITH LOCAL AND NATIONAL CODES.



FOR SCHEMATIC SEE DRAWING P/N 24281-23A

NO	REVISION	DATE	BY
5099	ADD THERMAL SWITCH TB	02/19/20	JRN
3042	LUG TORQ CHG	2/24/14	BMZ

TOLERANCES (EXCEPT AS NOTED)
DECIMAL
.XX ± .02
.XXX ± .01
FRACTIONAL
± 1/32
ANGULAR
± 1/2°

TCI W132 N10611 GRANT DRIVE
GERMANTOWN, WI. 53022

Standard, SineWave Filter
Open, 100HP, 110AMP, 600V

DRN. BY DSW DATE 10/12/2010 DWG. NO. B 104424DG

SCALE TO FIT APRVD. SHT.1 of 1