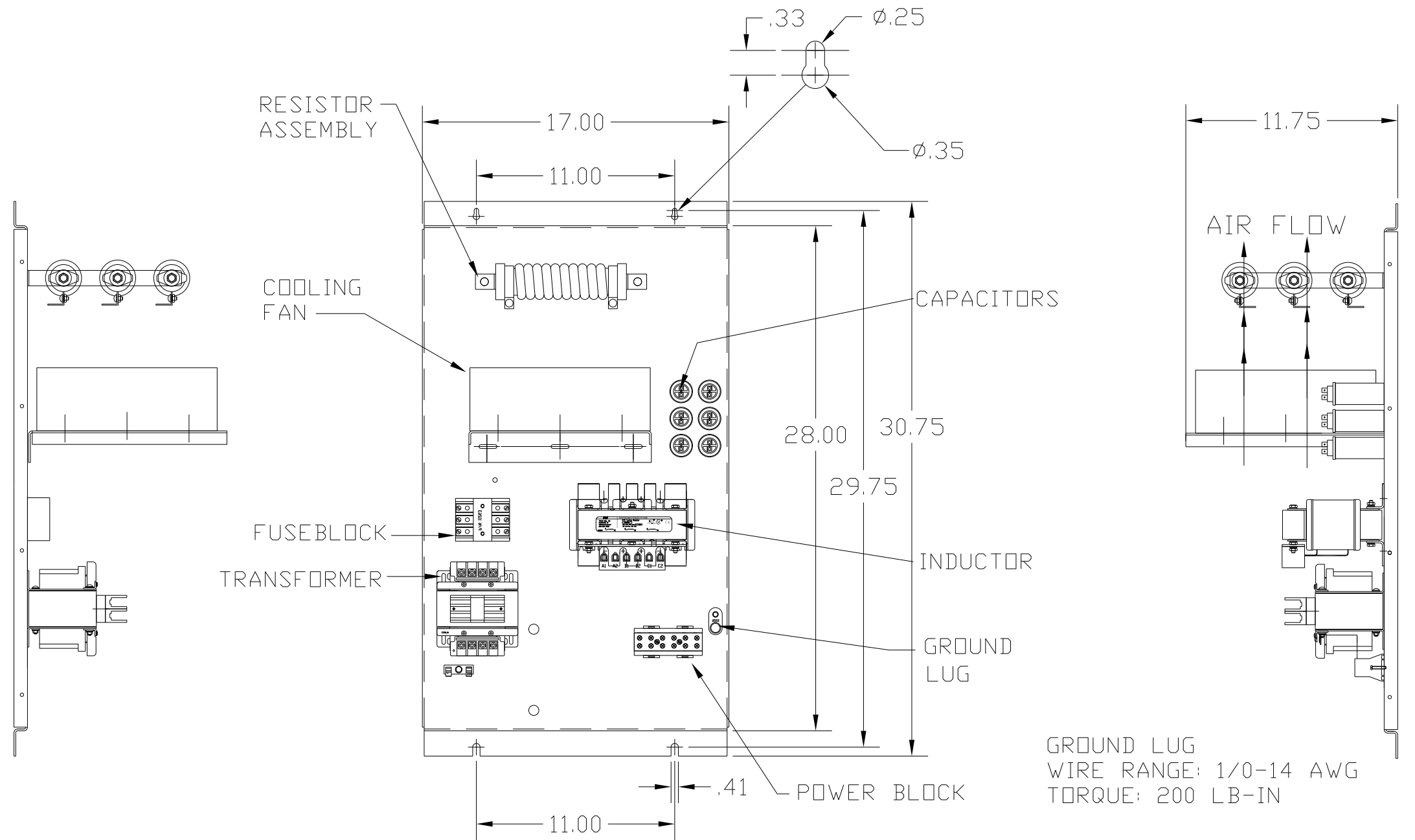


KMG10C00A

APPROX WEIGHT: 64LBS

KMG HIGH PERFORMANCE OUTPUT FILTER	
PART NUMBER: KMG10C00A	DRAWING#: 104414DG
FLA: 10	SYSTEM VOLTAGE: 600
HZ: 80	SCHEMATIC: 24281-11A
PHASE: 3	
MOTORGUARD	



LINE CONNECTIONS

WIRE RANGE: 1 AWG THRU 4 AWG 35 LB-IN
 6 AWG THRU 14 AWG 30 LB-IN
 16 AWG THRU 22 AWG 25 LB-IN

FOR SCHEMATIC SEE DRAWING P/N 24281-11A

CUSTOMER IS RESPONSIBLE FOR PROPER COOLING OF COMPONENTS IN CUSTOMERS ASSEMBLY.

CUSTOMER IS RESPONSIBLE FOR PROPER INSTALLATION OF ASSEMBLY IN ACCORDANCE WITH LOCAL AND NATIONAL CODES.

				TOLERANCES (EXCEPT AS NOTED)	7878 N. 86th STREET MILWAUKEE, WI 53224
				DECIMAL	
				.XX ± .02	
				.XXX ± .01	
				FRACTIONAL	Standard, SineWave Filter Open, 7.5HP, 10AMP, 600V
				± 1/32	
				ANGULAR	DRN. BY DSW
				± 1/2°	DATE 10/12/2010
NO	REVISION	DATE	BY		DWG. NO. 104414DG
					SCALE TO FIT
					APRVD.
					B
					SHT.1 OF1