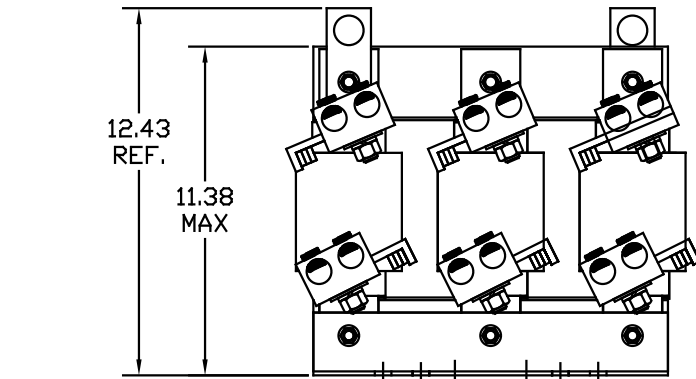


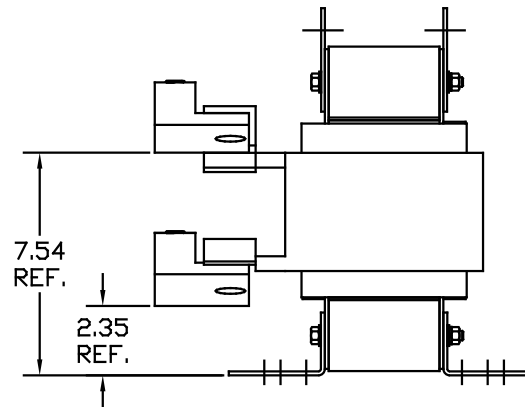
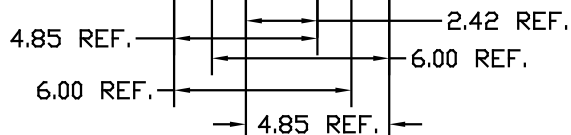
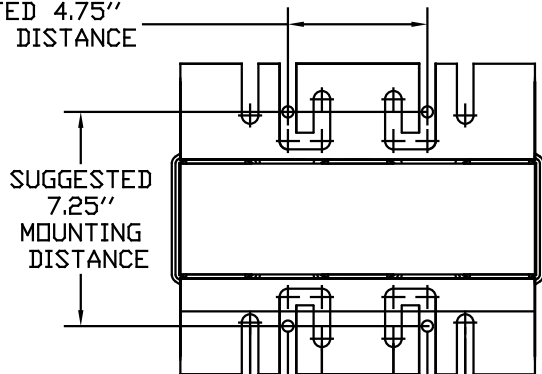
CATALOG NO	VOLTS(V.)	__mH±10%	__AMPS(A)	APPROX WT-LBS
KLRUL480DPT	17.25	.055	480	187

LUG WIRE RANGE TWO 600MCM-2, AL. OR CU.
FOR REACTOR.
TIGHTENING TORQUE. 500 LB-IN

TCI TRANS-COIL, INC MILWAUKEE WI WWW.transcoil.com 800-824-8282	<i>Performance and Protection for Drives.</i> KLR Series Line Reactor		
	CATALOG#	3PH, 60Hz, 600V Max, Amps 40C Amb Max, 150C Rise Terminal Torque LB-IN	



SUGGESTED 4.75" MOUNTING DISTANCE



NOTE: LUGS ROTATED TO MEET CLEARANCE (PHASE TO PHASE), AND TO MEET CLEARANCE FROM LUGS TO GROUNDING SURFACE.

				TOLERANCES EXCEPT AS NOTED: DECIMAL XX ±.03 .XXX ±.01 FRACTIONAL ± 1/32 ANGULAR ± 1/2°		TCI 7878 N. 86th STREET MILWAUKEE, WI 53224	
				KLRUL OPEN (FRAME S) LINE REACTOR		DWS BY DSW DATE 05/14/04 DWG. NO. KLRULOPEN-35.DWG	
NO REVISION				DATE BY		SCALE TO FIT C KLRULOPEN-35.DWG SHT. 1 OF 1	