

CATALOG NO	VOLTS(V.)	__mH±10%	__AMPS(A)	APPROX WT-LBS
KLRUL480CPT	24.00	.077	480	190
KLRUL480EPT	28.75	.092	480	190
KLRUL600APT	14.40	.037	600	165
KLRUL600DPT	17.25	.044	600	165

TCI Performance and Protection for Drives.

TRANS-COIL, INC.
MILWAUKEE WI
WWW.transcoil.com
800-824-8282

KLR Series Line Reactor

CATALOG#

3PH, 60Hz, 600V Max. **Ames**

40C Amb Max, 185C Rise

Terminal Torque **15-20**

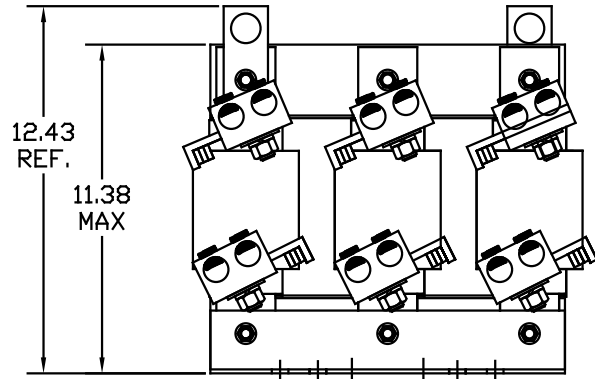
UL LISTED

CE

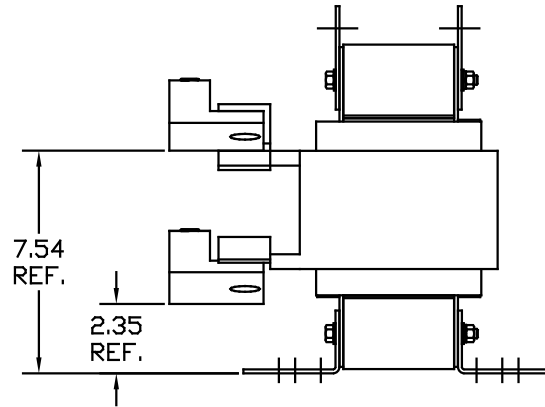
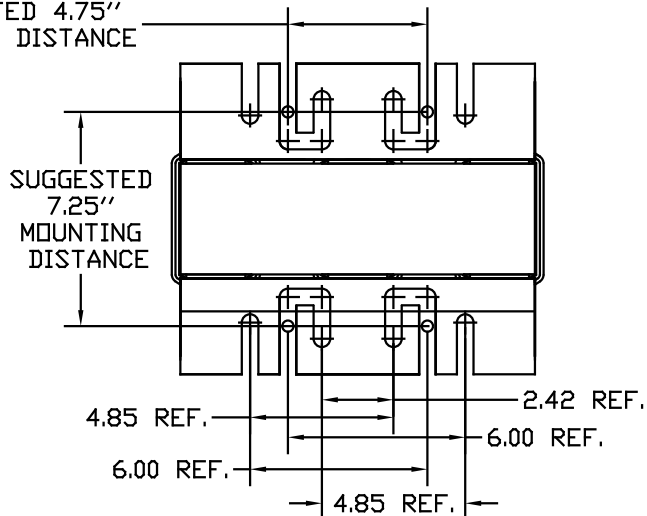
A1 A2 B1 B2 C1 C2

LUG WIRE RANGE TWO 600MCM-2, AL. OR CU.
FOR REACTOR.

TIGHTENING TORQUE. 500 LB-IN



SUGGESTED 4.75" MOUNTING DISTANCE



NOTE: LUGS ROTATED TO MEET CLEARANCE (PHASE TO PHASE).
AND TO MEET CLEARANCE FROM LUGS TO GROUNDING SURFACE.

NO	REVISION	DATE	BY	TOLERANCES EXCEPT AS NOTED: DECIMAL XX ±.03 .XXX±.01 FRACTIONAL ± 1/32 ANGULAR ± 1/2°	7878 N. 86th STREET MILWAUKEE, WI 53224
					KLRUL OPEN, (FRAME S) LINE REACTOR
					DESIGNED BY DSW DATE 05/14/04 DWG. NO. KLRULOPEN-34.DG
					SCALE TO FIT APPROVED BY [Signature] SHT. 1 OF 1