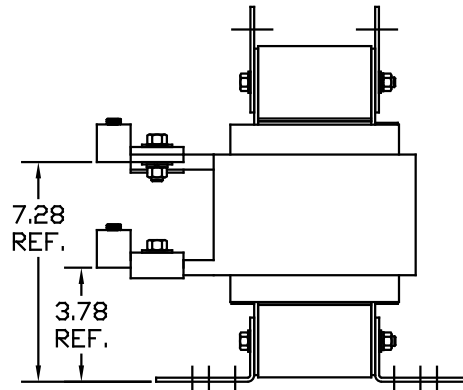
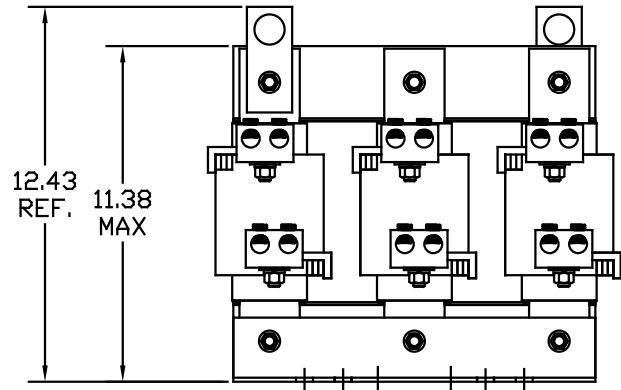


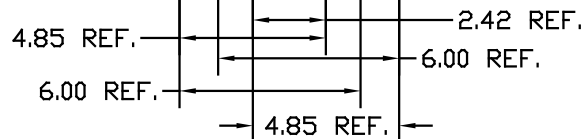
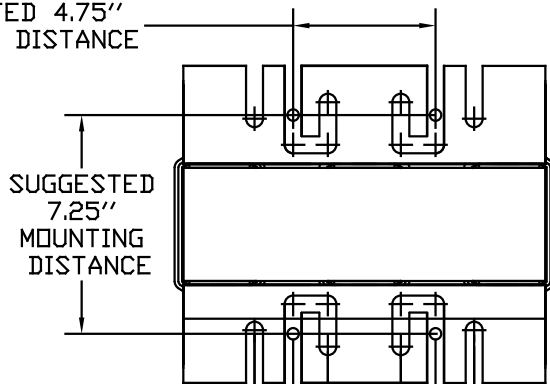
CATALOG NO	VOLTS(V.)	__mH±10%	__AMPS(A)	APPROX WT-LBS
KLRUL360EPT	28.75	.122	360	175

TCI TRANS-COIL, INC MILWAUKEE WI WWW.transcoil.com 800-824-8282	<i>Performance and Protection for Drives.</i> KLR Series Line Reactor		
	CATALOG # _____ 3PH, 60Hz, 600V Max, _____ Amps 40C Amb Max, 155C Rise Terminal Torque _____ LB-IN		

LUG WIRE RANGE TWO 350MCM-4, AL. OR CU.
 TIGHTENING TORQUE. 275 LB-IN



SUGGESTED 4.75" MOUNTING DISTANCE



				TOLERANCES EXCEPT AS NOTED: DECIMAL .XX ±.03 .XXX ±.01 FRACTIONAL ± 1/32 ANGULAR ± 1/2°	7878 N. 86th STREET MILWAUKEE, WI 53224
				KLRUL OPEN, (FRAME S) LINE REACTOR	
NO	REVISION	DATE	BY	DSW TO FIT	DATE 05/14/04 KLRULOPEN-29DG SHT. 1 OF 1