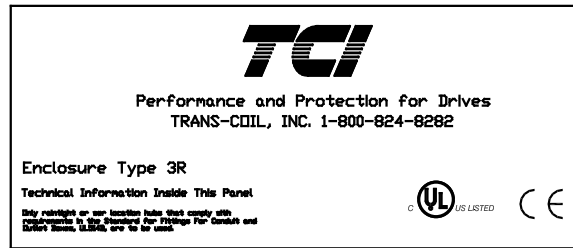


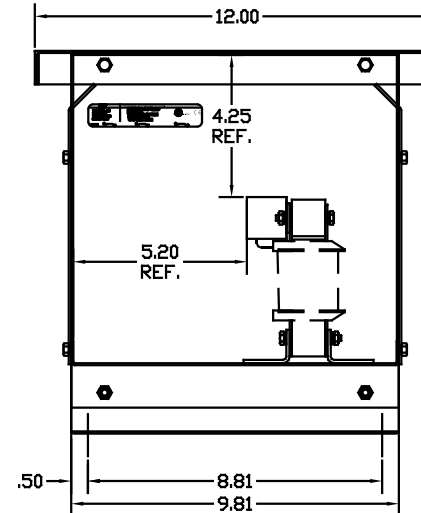
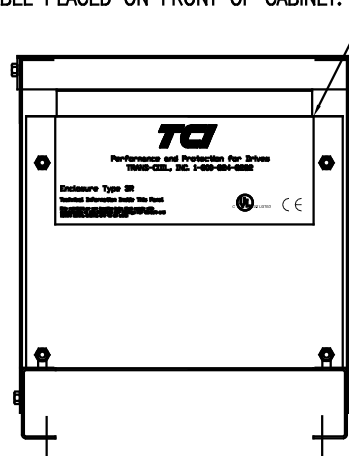
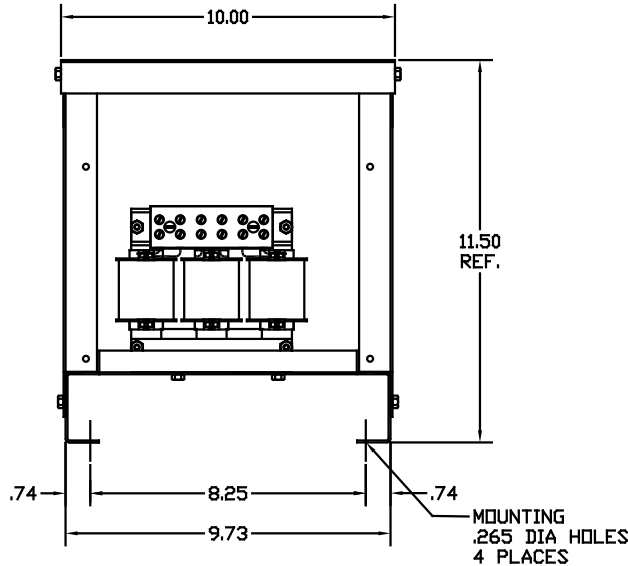
LABEL PLACED ON INSIDE WALL OF CABINET.



LABEL PLACED ON FRONT OF CABINET.

CATALOG NO	VOLTS(V)	__mH±10%	__AMPS(A)	APPROX WT-LBS
KLRUL16ATBE3R	14.40	1.38	16	23
KLRUL16BTBE3R	7.20	.689	16	22
KLRUL16DTBE3R	17.25	1.65	16	23
KLRUL16FTBE3R	8.62	.826	16	22

BLOCK WIRE RANGE FOR REACTOR AND TIGHTENING TORQUE.	#18-#4 AWG 20 LB-IN
---	------------------------



NOTE: A1, A2, B1, B2, C1, C2, MARKINGS ON TERMINAL BLOCK FOR REFERENCE ONLY.



TERMINAL BLK MARKING

CUSTOMER IS RESPONSIBLE FOR INSTALLATION TO MEET ALL NATIONAL AND LOCAL ELECTRICAL CODES.

FINISH:
VENDOR - LILLY POWDER COATINGS, INC.
PRODUCT CODE - 312E
COLOR - PEBBLE GRAY
POWDER TYPE - POLYESTER-POLYURETHANE
PAINT SUITABLE FOR OUTDOOR APPLICATION PER UL TYPE 3R AND APPLIED PER A UL ACCEPTED DTVV2 COATING PROGRAM.

NO	REVISION	DATE	BY	TOLERANCES EXCEPT AS NOTED	7878 N. 86th STREET MILWAUKEE, WI 53224 KLRUL, TYPE 3R, FRAME B	DRN BY	DATE	DWG NO.
				DECIMAL .XX ± .03 .XXX ± .01			DSW	10/01/04
				FRACTIONAL ± 1/32		SCALE	APPROV.	KLRBE3R-1DG
				ANGULAR ± 1/2°		TO FIT		SHT. 1 of 1