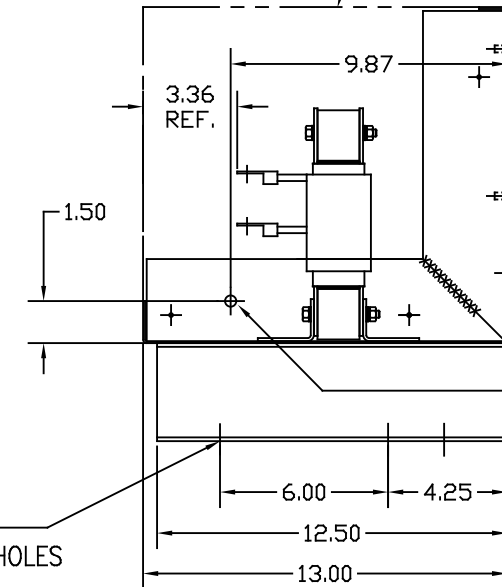


KEYSLOTS FOR 1/4-20 SCREWS 2 PLACES  
COVER IN PLACE



LOCATION FOR CUSTOMERS CONDUIT FITTING (BOTH SIDES)

.328 DIA. 2 HOLES

.44 DIA. 4 MTG. HOLES

CUSTOMER IS RESPONSIBLE FOR INSTALLATION TO MEET ALL NATIONAL AND LOCAL ELECTRICAL CODES.

|      |              |            |           |               |            |                         |
|------|--------------|------------|-----------|---------------|------------|-------------------------|
| 690V | NEC MOTOR HP | CATALOG NO | __AMPS(A) | APPROX WT-LBS | WATTS LOSS | TERMINAL RING HOLE SIZE |
| 5% Z | 40           | KLR45ERL4V | 45        | 61            | 146        | .38 DIA HOLE            |

|                            |            |         |
|----------------------------|------------|---------|
| TOLERANCES EXCEPT AS NOTED |            |         |
| DECIMAL                    | .XX ±.03   |         |
|                            | .XXX ±.010 |         |
| FRACTIONAL                 | ± 1/16     |         |
| ANGULAR                    | ± 1/2°     |         |
| NO                         | REVISION   | DATE BY |

**TCI** 7878 N. 86th STREET MILWAUKEE, WI 53224

**KLR SERIES 3 PH REACTOR 690V (FRAME H) ENCLOSED**

DRN BY DSW DATE 03/30/07 DWG NO. KLR45ERL4VDG  
SCALE TO FIT APPR'D SHT.1 OF1