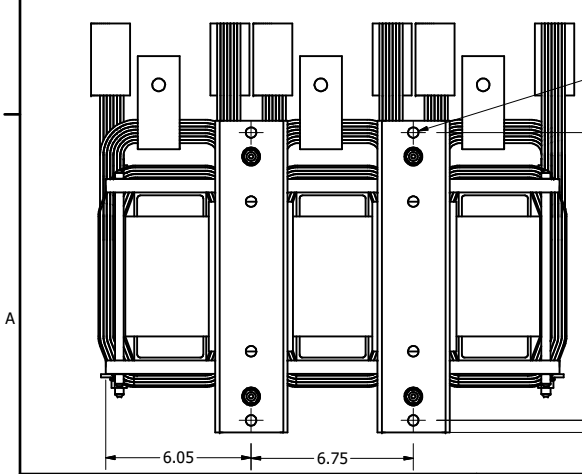
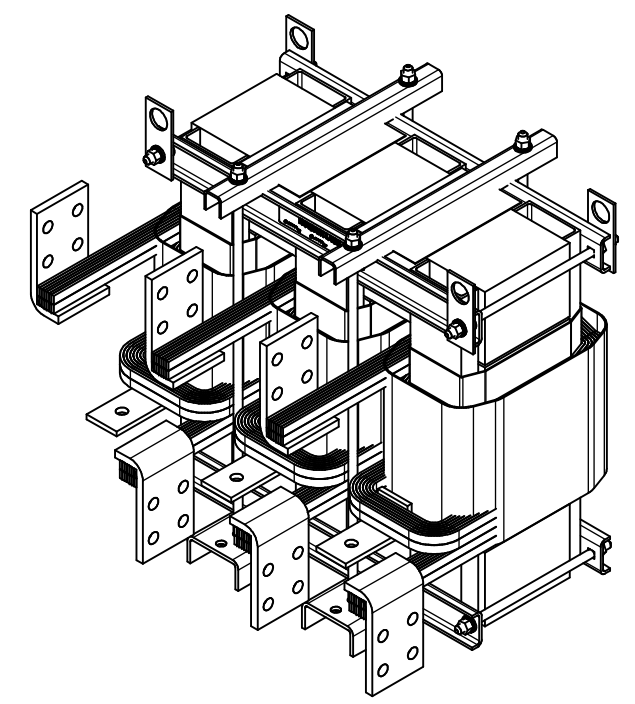
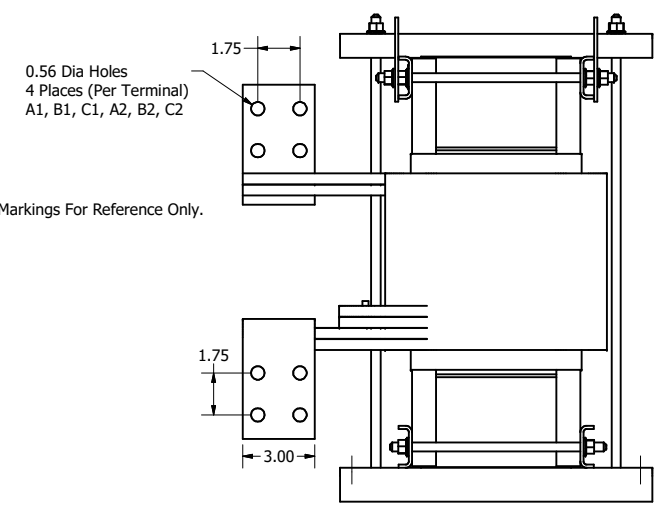
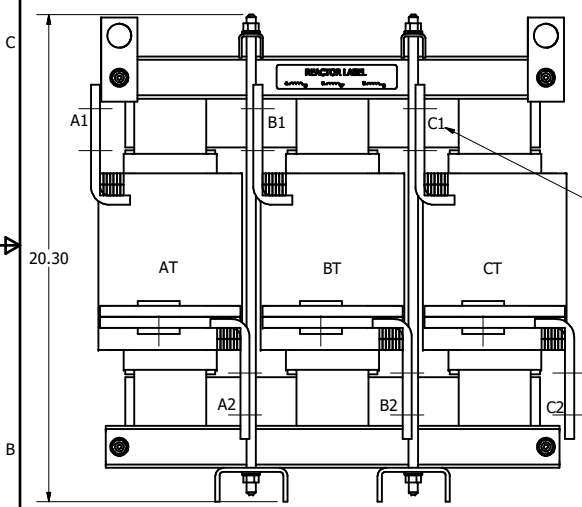
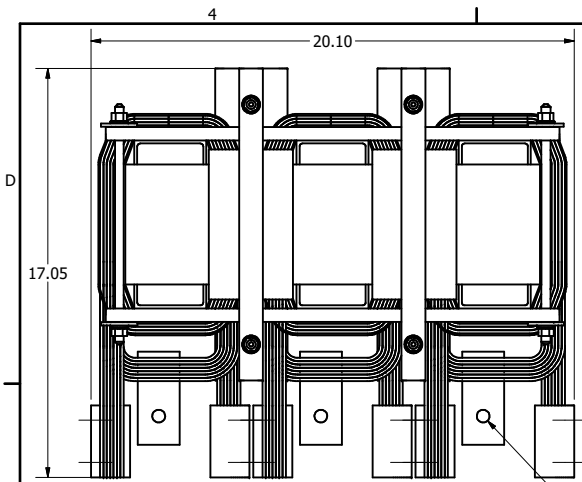


HP	TCI Part #	Rated Amps (A)	Max Amps (A)	uH +/-5%	Approx Weight (LBS)
1000	KDRY5TT	966	1200	88.8	495



Material(s) Shall be RoHS Compliant A

TCI, LLC CLAIMS PROPRIETARY RIGHTS IN THE MATERIAL HEREIN DISCLOSED. IT IS SUPPLIED WITHOUT PREJUDICE TO ANY PATENT RIGHTS OF TCI AND MAY NOT BE REPRODUCED OR USED TO MANUFACTURE ANYTHING SHOWN THEREIN WITHOUT WRITTEN PERMISSION FROM TCI.				TOLERANCES (EXCEPT AS NOTED) DECIMAL .XX ± .25 .XXX ± .10 FRACTIONAL ± 1/16 ANGULAR ± 1°	
A	As Designed Was Drawing 106985	7/17/17	DSW	W132 N10611 Grant Drive Germantown, WI 53022 KDRY5TT, HGP Reactor, 480V, 1000HP	
NO	REVISION	DATE	BY	DRN BY: DSW SCALE: 1/2 DATE: 7/17/17 PART NO: 107179DG DRN: C	107179DG SHEET 1 OF 1