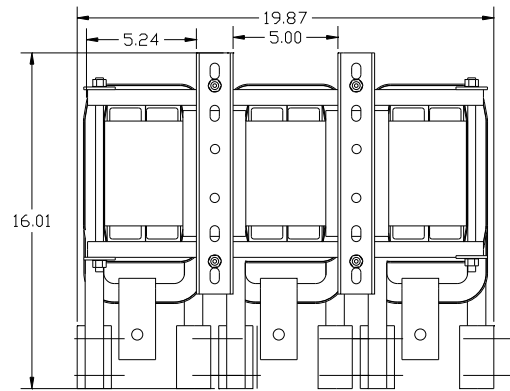


HP	CATALOG NO	__AMPS(A)	APPROX WT-LBS
800	KDRY3TT	960	515



**TCL** Performance and Protection for Drives.

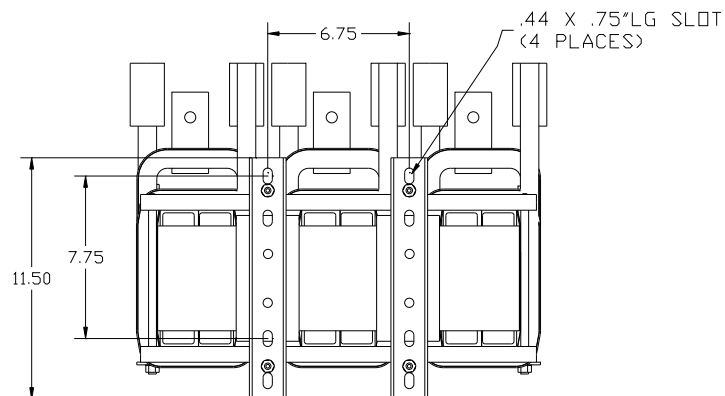
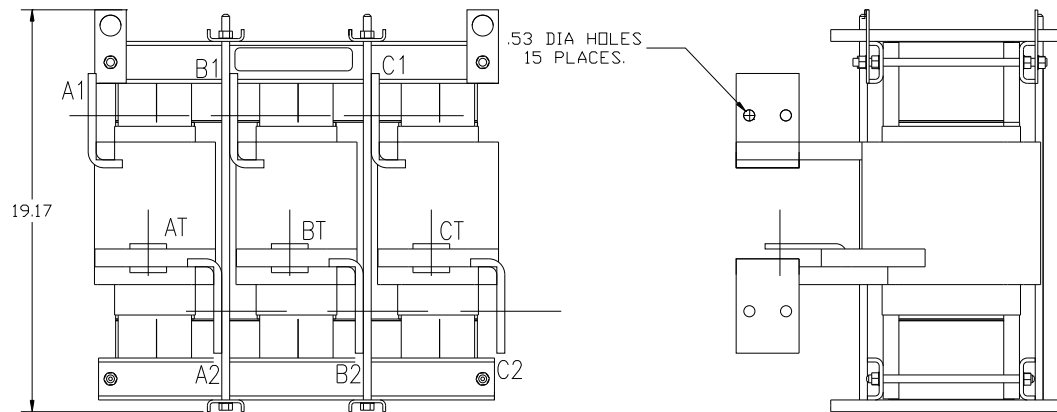
TRANS-COIL, INC.  
MILWAUKEE, WI  
WWW.TRANS-COIL.COM  
800-824-8282

KDR Drive Reactor  
[REACTOR] Motor Amps [---] Max.  
3% 60Hz, 60V Max, [---] A Bypass  
40C Amb Max, 155C Rise

UL® US CE

A1 AT A2 B1 BT B2 C1 CT C2

A1, AT, A2, B1, BT, B2, C1, CT, C2, MARKINGS FOR REFERENCE ONLY



TOLERANCES (EXCEPT AS NOTED)				TCL 7878 N. 86th STREET MILWAUKEE, WI 53224	
			DECIMAL	KDRY3TT 800HP HGP FILTER REACTOR	
			.XX ± .03		
			.XXX ± .01		
			FRACTIONAL ± 1/32		
A	AS RELEASED	8/9/13	DSW	DRN. BY DSW	DATE 7/10/2013
NO	REVISION	DATE	BY	SCALE TO FIT	APPRD. C 105324DG
			ANGULAR ± 1/2°		SHT. 1 OF 1