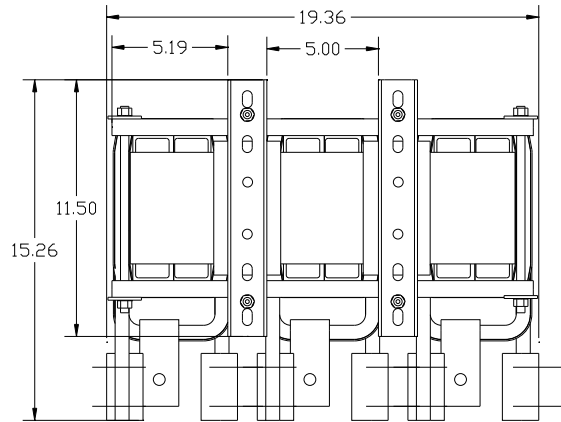
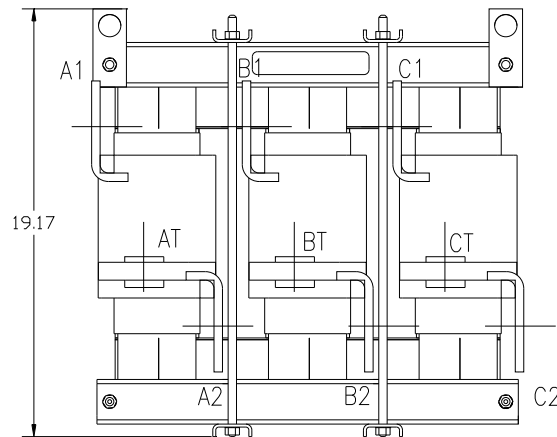


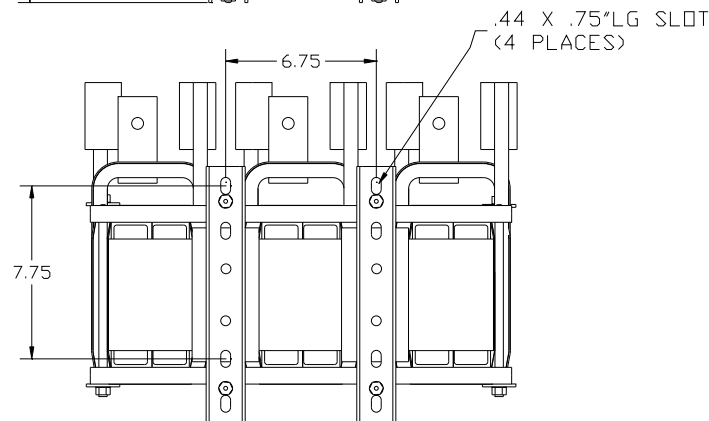
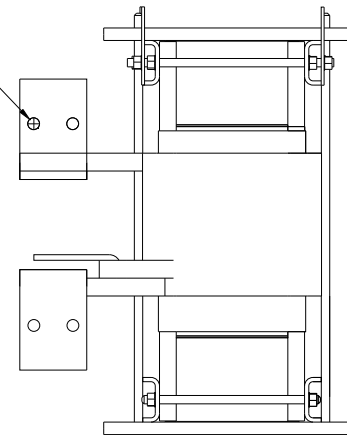
| | | | |
|-----|------------|-----------|---------------|
| HP | CATALOG NO | __AMPS(A) | APPROX WT-LBS |
| 600 | KDRY1TT | 720 | 510 |



A1, AT, A2, B1, BT, B2, C1, CT, C2, MARKINGS FOR REFERENCE ONLY



.53 DIA HOLES
15 PLACES.



| | | |
|--|---|--|
| TCI TRANS-COIL, INC MILWAUKEE, WI WWW.TRANS-COIL.COM 800-824-8282 | KDR Drive Reactor [REACTOR] Motor Amps [---] Max 3PH, 480V, 600V Max, [---] A Base 40C Amb Max, 155C Rise | |
| | | |

| | | | | | | | |
|---|-------------|--------|-----|--|----------|---|----|
| | | | | TOLERANCES (EXCEPT AS NOTED) DECIMAL .XX ± .03 .XXX ± .01 FRACTIONAL ± 1/32 ANGULAR ± 1/2° | | 7878 N. 86th STREET MILWAUKEE, WI 53224 | |
| | | | | KDRY1TT 600HP HGP FILTER REACTOR | | DRN BY: DSW DATE: 7/9/2013 DWG NO: 105322DG | |
| B | AS RELEASED | 8/9/13 | DSW | NO | REVISION | DATE | BY |
| | | | | SCALE: TO FIT | | APPROV: [Signature] | |
| | | | | | | SHT. 1 OF 1 | |