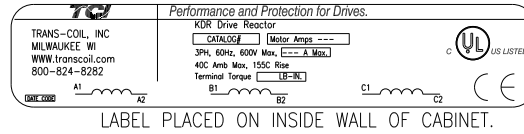


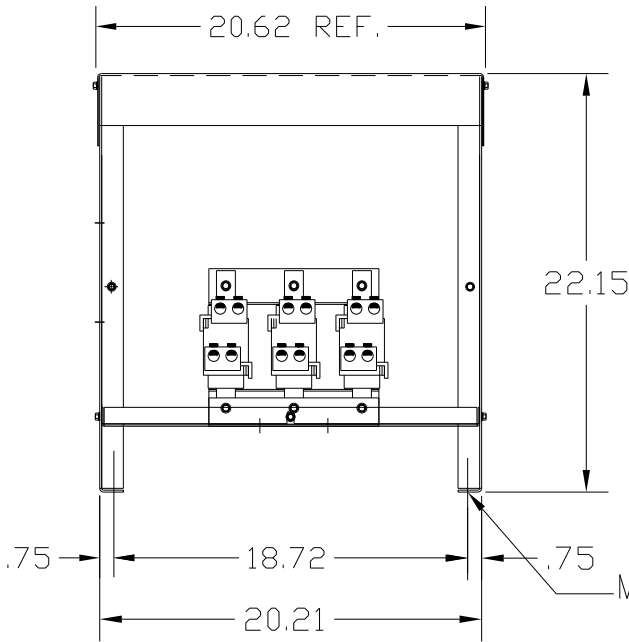
CATALOG NO	VOLTAGE	NEC MOTOR HP	NEC MOTOR CURRENT	WATTS LOSS	APPROX. WEIGHT-LBS	TORQUE (LB-IN)
KDRULJ44LE3R	575/600	450	412	473	150	SEE BELOW

LUG WIRE RANGE TWO 350MCM-4, AL. OR CU.  
FOR REACTOR.  
TIGHTENING TORQUE. 275 LB-IN

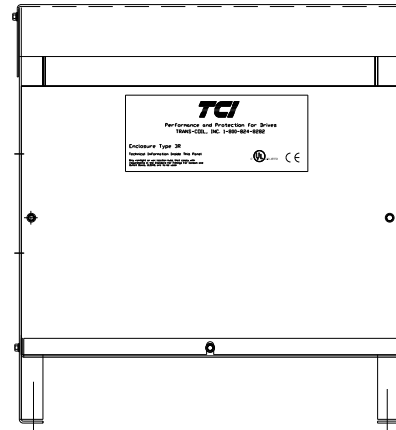


NOTE 1: WATTS LOSS WILL VARY DUE TO FUNDAMENTAL FREQUENCY, CARRIER FREQUENCY AND OTHER SYSTEM CHARACTERISTICS.  
KDR DRIVE REACTORS COMPLY WITH THE THERMAL AND ALTITUDE STANDARDS SET FORTH BY NEMA ST20-1992..

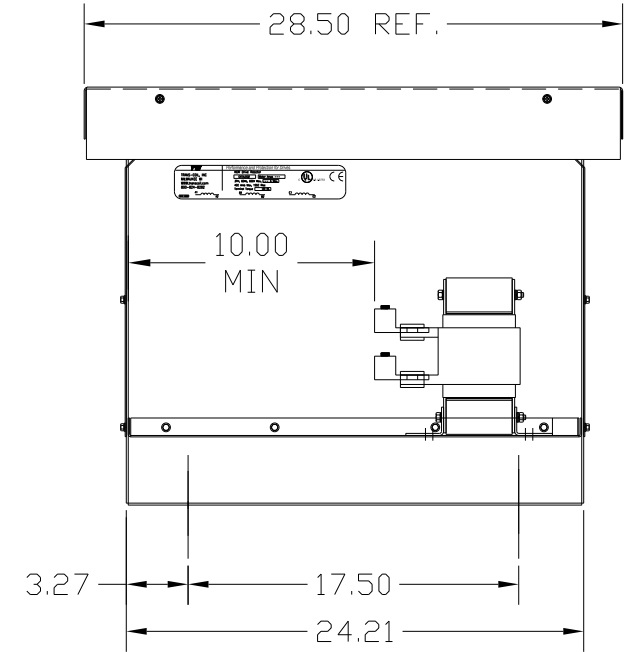
NEC MOTOR CURRENTS SHOWN IN THE 208/240 VOLT CHART ARE BASED ON HORSEPOWER AT 208 VOLT. 575/600 VOLT CHART USE THE 575 VOLT CURRENT RATING.



.50 DIA MOUNTING HOLE (4 PLACES)



CUSTOMER IS RESPONSIBLE FOR INSTALLATION TO MEET ALL NATIONAL AND LOCAL ELECTRICAL CODES.



FINISH:  
VENDOR - LILLY POWDER COATINGS, INC.  
PRODUCT CODE - 312E  
COLOR - PEBBLE GRAY  
POWDER TYPE - POLYESTER-POLYURETHANE  
PAINT SUITABLE FOR OUTDOOR APPLICATION PER UL TYPE 3R AND APPLIED PER A UL ACCEPTED DTVV2 COATING PROGRAM.

NOTE: USE ONLY HUBS OR FITTINGS THAT COMPLY WITH UL514B FOR TYPE 3R ENCLOSURES.

TOLERANCES (EXCEPT AS NOTED)				7878 N. 86th STREET MILWAUKEE, WI 53224
DECIMAL	FRACTIONAL	ANGULAR	SCALE	
.XX ± .03	± 1/32	± 1/2°		<b>KDR DRIVE REACTOR</b> <b>575V, ENCLOSED, TYPE 3R</b>
.XXX ± .01				
DRN BY DSW	DATE 9/21/04	DWG. NO. KDRULJ44LE3RDG	APRVD	SHT. 1 OF 1
NO	REVISION	DATE	BY	