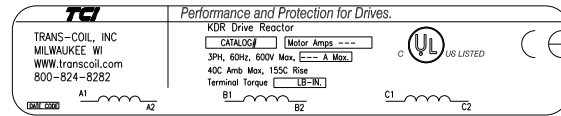


CATALOG NO	VOLTAGE	NEC MOTOR HP	NEC MOTOR CURRENT	WATTS LOSS	APPROX. WEIGHT-LBS	TORQUE (LB-IN)
KDRULJ1PE01	480	250	302	SEE NOTE: 1	136	500



LABEL PLACED ON INSIDE WALL OF CABINET.

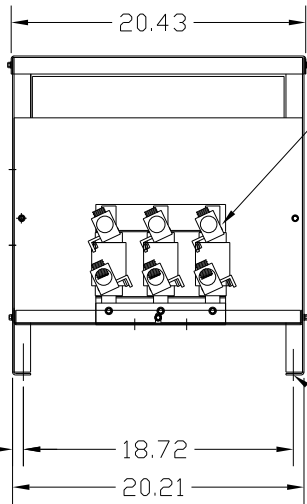
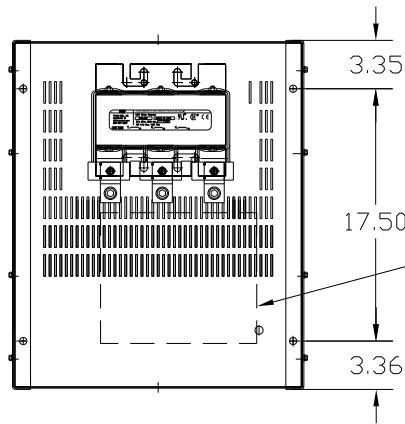
RECOMMENDED CONDUIT ENTRANCE AREA - LEFT FRONT SIDE, BOTTOM FRONT, RIGHT FRONT SIDE AND TOP.

NOTE: ROTATE AS NEEDED TO MEET .50 CLEARANCE BETWEEN TERMINAL OR LUGS (PHASE TO PHASE). ALSO .50 CLEARANCE FROM TERMINALS OR LUGS TO GROUNDING SURFACE.

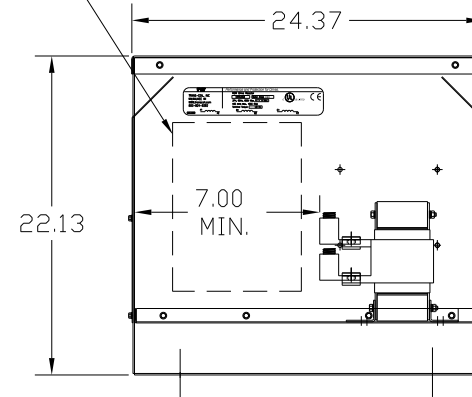
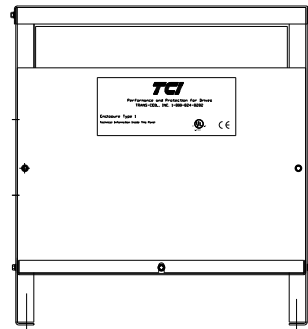
NOTE 1: WATTS LOSS WILL VARY DUE TO FUNDAMENTAL FREQUENCY, CARRIER FREQUENCY AND OTHER SYSTEM CHARACTERISTICS. KDR DRIVE REACTORS COMPLY WITH THE THERMAL AND ALTITUDE STANDARDS SET FORTH BY NEMA ST20-1992..

NEC MOTOR CURRENTS SHOWN IN THE 208/240 VOLT CHART ARE BASED ON HORSEPOWER AT 208 VOLT. 575/600 VOLT CHART USE THE 575 VOLT CURRENT RATING.

LUG WIRE RANGE ONE 600MCM-4
 FOR REACTOR. TWO 250MCM-1/0, AL. OR CU.
 TIGHTENING TORQUE. 500 LB-IN




.50 DIA MOUNTING HOLE (4 PLACES)



VENDOR LILLY POWDER COATINGS, INC.
 PRODUCT CODE 312E
 COLOR PEBBLE GRAY
 POWDER TYPE POLYESTER POLYURETHANE

PAINT SUITABLE FOR OUTDOOR APPLICATION PER UL TYPE 3R AND APPLIED PER A UL ACCEPTED DTW2 COATING PROGRAM.

CUSTOMER IS RESPONSIBLE FOR INSTALLATION TO MEET ALL LOCAL AND NATIONAL CODES

				TOLERANCES (EXCEPT AS NOTED):		 7878 N. 86th STREET MILWAUKEE, WI 53224
				DECIMAL		
				.XX ± .03		
				.XXX ± .01		
				FRACTIONAL ± 1/32		
				ANGULAR ± 1/2°		DRN. BY DSW DATE 6/21/04 DWG. NO. B SCALE APRVD. KDRULJ1PE01DG SHT. 1 OF 1
NO	REVISION	DATE	BY			