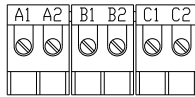
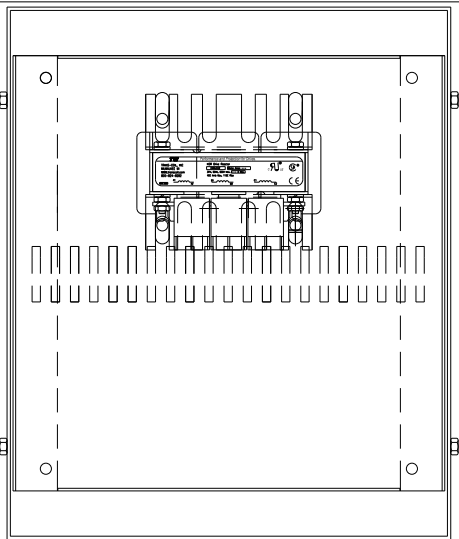


| CATALOG NO   | VOLTAGE | NEC MOTOR HP | NEC MOTOR CURRENT | WATTS LOSS | APPROX. WEIGHT-LBS | TORQUE (LB-IN) |
|--------------|---------|--------------|-------------------|------------|--------------------|----------------|
| KDRULA27LE3R | 208/240 | 2.0          | 7.5               | 21         | 19                 | 10             |

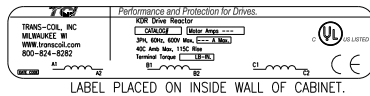


TERMINAL BLK MARKING

NOTE: A1, A2, B1, B2, C1, C2, MAKING'S ON TERMINAL BLOCK FOR REFERENCE ONLY.

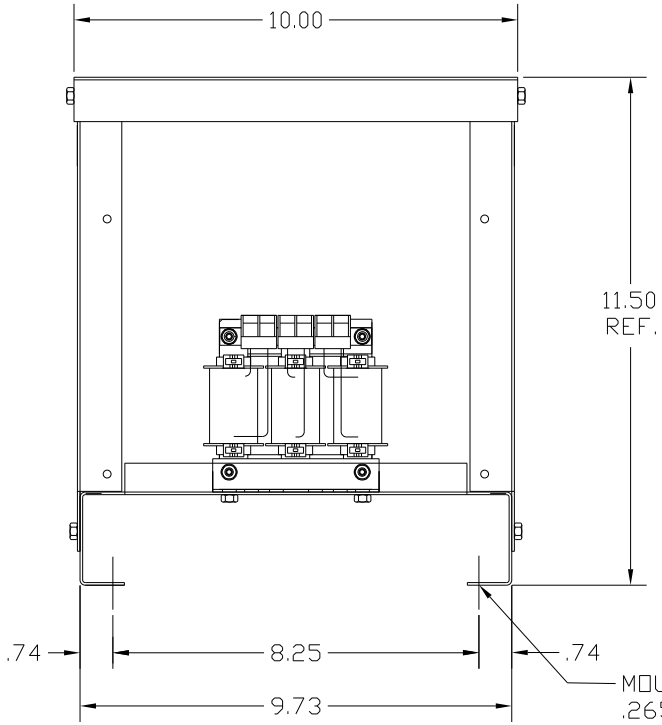
NOTE 1: WATTS LOSS WILL VARY DUE TO FUNDAMENTAL FREQUENCY, CARRIER FREQUENCY AND OTHER SYSTEM CHARACTERISTICS.

KDR DRIVE REACTORS COMPLY WITH THE THERMAL AND ALTITUDE STANDARDS SET FORTH BY NEMA ST20-1992..

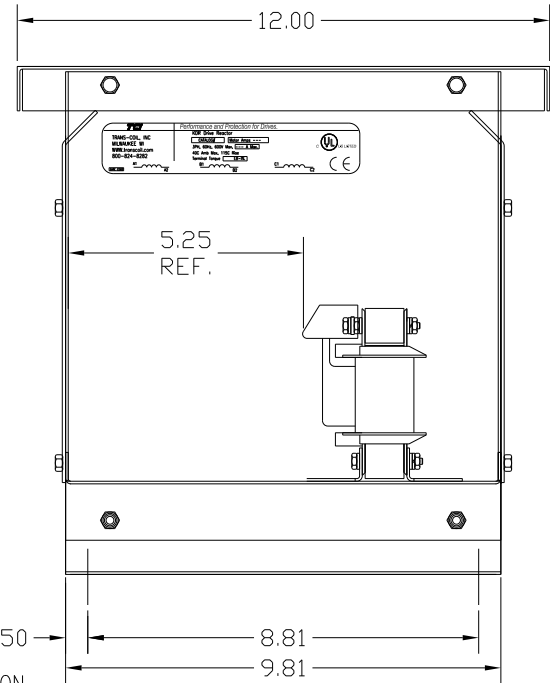
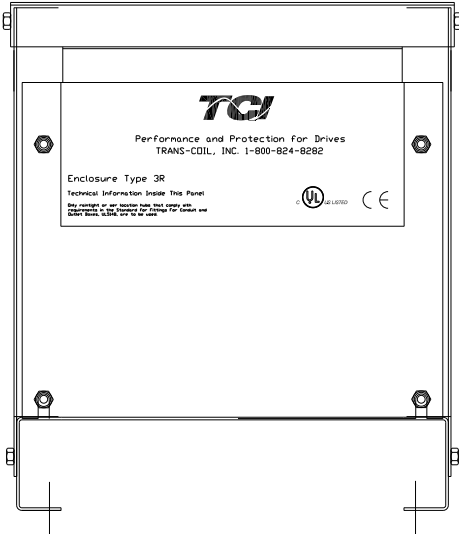


LABEL PLACED ON INSIDE WALL OF CABINET.

NEC MOTOR CURRENTS SHOWN IN THE 208/240 VOLT CHART ARE BASED ON HORSEPOWER AT 208 VOLT. 575/600 VOLT CHART USE THE 575 VOLT CURRENT RATING.



MOUNTING .265 DIA HOLES 4 PLACES



CUSTOMER IS RESPONSIBLE FOR INSTALLATION TO MEET ALL NATIONAL AND LOCAL ELECTRICAL CODES.

NOTE: USE ONLY HUBS OR FITTINGS THAT COMPLY WITH UL514B FOR TYPE 3R ENCLOSURES.

FINISH:  
 VENDOR - LILLY POWDER COATINGS, INC.  
 PRODUCT CODE - 312E  
 COLOR - PEBBLE GRAY  
 POWDER TYPE - POLYESTER-POLYURETHANE  
 PAINT SUITABLE FOR OUTDOOR APPLICATION PER UL TYPE 3R AND APPLIED PER A UL ACCEPTED DTVV2 COATING PROGRAM.

|    |  |          |      |   |  |
|----|--|----------|------|---|--|
|    |  |          |      | <b>TCI</b> 7878 N. 86th STREET<br>MILWAUKEE, WI 53224 |  |
|    |  |          |      | KDR DRIVE REACTOR<br>240V, ENCLOSED, TYPE 3R          |  |
| NO |  | REVISION | DATE | BY  | TOLERANCES (EXCEPT AS NOTED):<br>DECIMAL<br>.XX ± .03<br>.XXX ± .01<br>FRACTIONAL<br>± 1/32<br>ANGULAR<br>± 1/2° |
|    |  |          |      |   | DRN. BY DSW DATE 9/20/04 DWG. NO. KDRULA27LE3R DG<br>SCALE APRVD. SHT. 1 of 1                                    |